

# **Procedures for the Submission of Entries Including Key to Syllabuses and Option Details**

**General Qualifications  
(IGCSE, GCE O Level, AS & A Level, AICE (HC))  
June 2010**

**Checkpoint  
May 2010**

**Cambridge International Primary Programme  
June 2010**

**INT./E.3 Z2 (General Qualifications)**



Advice on the submission of entries can be obtained from University of Cambridge International Examinations Customer Services on: **+44 1223 553554**

All correspondence relating to the submission of entries, including entry forms, should be addressed to:  
**University of Cambridge International Examinations, 1 Hills Road, Cambridge, CB1 2EU, United Kingdom**

Facsimile: **+44 1223 553558**  
E-mail address: **international@cie.org.uk**

Please quote your Centre Number in all communications.

**IT SHOULD BE NOTED THAT ALL PREVIOUS COPIES OF THE ENTRY INSTRUCTION BOOKLET INT./E.3 FOR THE MAY, JUNE, OCTOBER AND NOVEMBER EXAMINATION SESSIONS SHOULD BE DESTROYED.**

## CONTENTS

	Page
Instructions for the submission of entries for General Qualification Examinations - May and June .....	03
• Introduction.....	03
• Syllabus Information.....	03
• Methods of Entry .....	03
• Final Date for Receipt of Entries .....	03
• Private Candidates .....	04
• Coursework .....	04
• Preparation of Electronic Entry files using CAMEO .....	04
• Preparation of Electronic Entry files using the Excel based 'CIE Entry Form' .....	08
• Uploading your entry file to CIE Direct .....	10
• Candidate Numbering .....	10
• Previous Entry Details .....	11
• Carry Forward of Marks for IGCSE and GCE O Level.....	11
• Entry Amendments.....	11
• Entry Exclusions.....	11
• Viewing Entries Online .....	12
• Documents you will receive as a result of making Entries .....	12
• Example of a CIE Entry Form Filled in Correctly .....	13
• Examples of documentation relating to entries .....	14
Entering for an Examination, A Notice to Candidates .....	18
Cambridge International Primary Programme .....	19
• Key to Cambridge International Primary Achievement Tests in alphabetical order.....	20
Checkpoint.....	21
• Submission of Teaching Group Titles .....	21
• Key to Checkpoint syllabuses in alphabetical order.....	22
• Checkpoint Teaching Group Information Form.....	23
International Certificate of Secondary Education (IGCSE).....	24
• General Coursework .....	24
• International Certificate of Education (ICE).....	24
• Key of IGCSE syllabuses in alphabetical order .....	25
• Instructions for the submission of entries for the ICE Group Award .....	40
General Certificate of Education Ordinary Level (GCE O Level) .....	45
• GCE O Level Location Entry Codes.....	45
• Key of GCE O Level syllabuses in alphabetical order .....	46

General Certificate of Education Advanced Subsidiary and Advanced Level (GCE AS & A Level) .....	53
• Staged Assessment .....	53
• Compensatory AS Level .....	54
• Retaking GCE AS & A Levels and carry forward options .....	54
• Advanced International Certificate of Education Diploma (AICE Diploma).....	54
• Key of GCE AS & A syllabuses in alphabetical order .....	55
• Key to AICE (Half-Credit) syllabuses .....	67
• Instructions for the submission of entries for the AICE Diploma.....	68
Index of Cambridge International Primary Achievement tests in syllabus code order .....	72
Index of Checkpoint syllabuses in syllabus code order .....	72
Index of IGCSE syllabuses in syllabus code order.....	72
Index of GCE Ordinary Level syllabuses in syllabus code order.....	73
Index of GCE Advanced Subsidiary Level and Advanced Level syllabuses in syllabus code order.....	74
Index of AICE (HC) syllabuses in syllabus code order .....	74

**INSTRUCTIONS FOR THE SUBMISSION OF ENTRIES FOR  
GENERAL QUALIFICATION EXAMINATIONS  
MAY AND JUNE 2010**

**1. Introduction**

These instructions apply to entries for General Qualification Examinations to be taken in May and June 2010.

**2. Syllabus Information**

Syllabus information, including syllabus numbers, entry option codes and prohibited combinations, is contained in the syllabus keys provided with these instructions. The syllabus keys give details of specific prohibited syllabus combinations. **In addition, no candidate may offer more than one syllabus with the same title at IGCSE or GCE Ordinary Level. A candidate is also not permitted to enter for the same syllabus code at two centres in the same examination session.**

**3. Methods of Entry**

Centres may submit entries:

- As a CAMEO file transmitted via CIE Direct or;
- Using the electronic Excel entry spreadsheet available on the disk sent with the entry despatch in September 2009 or from CIE Direct.

**Whichever method of entry is used, Centres are reminded of the importance of submitting accurate entry data. The materials supplied to Centres after the receipt of entries, including such items as question papers, coursework/internally-assessed mark sheets and attendance registers, are dependent upon those entries, as is the subsequent processing of candidates' marks, grades and certificates.**

**4. Final Date for the Receipt of Entries**

<b>Examination Session/ Qualification</b>	<b>May</b>	<b>June</b>
AICE (Half Credit) GCE A Level GCE AS Level GCE O Level IGCSE		21 February
Checkpoint	21 February	
Cambridge International Primary Programme		21 February

Centres should submit their entries as soon as possible. **Entries and amendments received after the above specified dates will be subject to late entry fees.** Following the receipt of entries, Centres will be invoiced for the fees due (please refer to your 'Examination Fees 2010' circular).

**No entries or amendments will be accepted after 17 April for May and June examination sessions.**

## 5. Private Candidates

University of Cambridge International Examinations are designed primarily for candidates who follow courses of study at schools and colleges that act as registered Centres. It is recognised, however, that there are candidates who may not attend schools or colleges, but who may wish to enter for the examinations. Such individuals are referred to as private candidates, and their status should be shown as Private in the CAMEO file, or by entering the letter '**P**' in the appropriate column on the electronic entry form.

It is the responsibility of the Centre to remit examination fees for any private candidates accepted by the Centre. Candidates may be required by the Centre through which they make their entry to reimburse the examination fee and to pay a further fee to cover the cost of supervision and marking of any internally assessed work by the staff of the Centre. Individuals who have been entered as private candidates are identified separately in summaries of the Centre's results. Statement of Results and Certificates will be sent to the Centre.

## 6. Coursework

Centres are reminded that an entry may only be made for most IGCSE syllabus options that include Coursework components (school-based assessment) provided CIE is satisfied that suitable and reliable moderation can be achieved. Teachers at the Centre must be trained by CIE in the appropriate subjects before Centres may undertake this internal assessment.

## 7. Preparation of Electronic Entry Files using CAMEO

### • What is CAMEO?

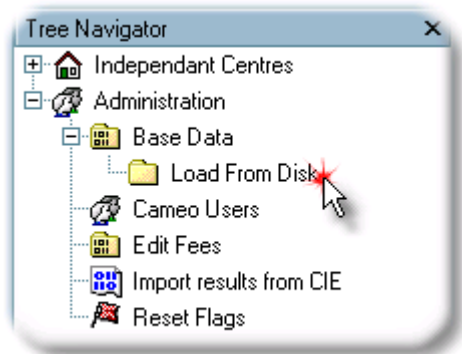
CAMEO is a piece of software that allows CIE Centres to build a database of information about their candidates and the CIE examinations that they take. CAMEO allows information to be sent from CIE to Centres, and from Centres to CIE as data files that can be 'imported' into, or 'exported' from CAMEO.

### • What is basedata?

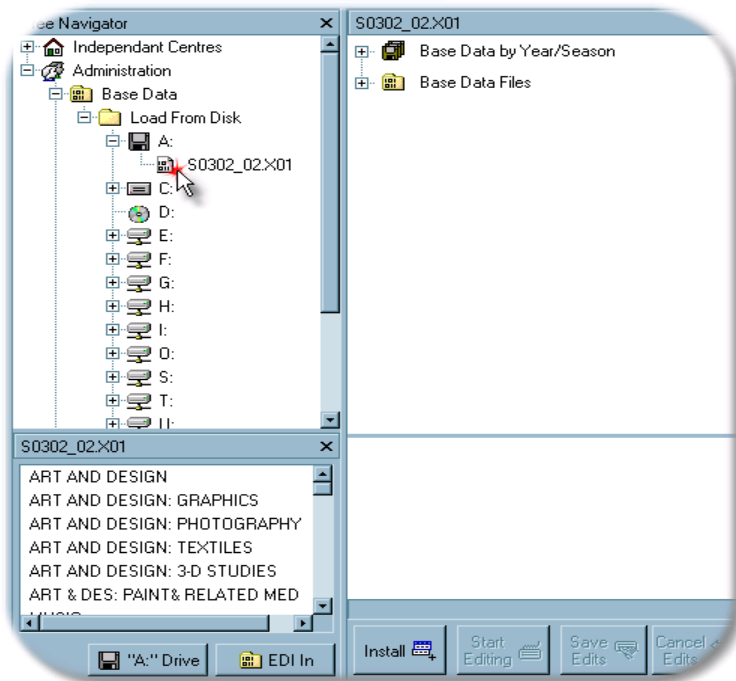
For each examination session CIE will supply a set of basedata that tells CAMEO about the assessments that are available in that session. A set of basedata is a set of 6 files produced by CIE that contain information about syllabuses and option codes and can be used to enter candidates. It also holds such information as timetable dates for components, the session (morning or afternoon) and the time allowed. Basedata files will be made available via the CIE Direct website (<https://direct.cie.org.uk>) approximately five months before the entry closing date.

### • Importing Basedata

Once you have downloaded the relevant basedata files from CIExchange, it needs to be saved in the directory C:\Program Files\UCLES\CIE CAMEO 32\Edlin. Then, in CAMEO click on 'Administration' → 'Basedata' → 'Load from disk'.

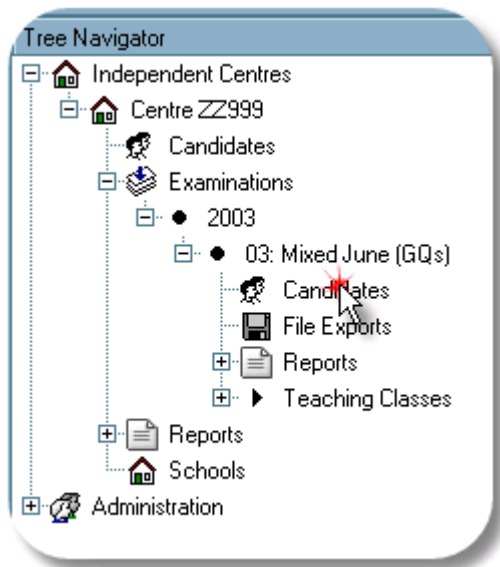


If the basedata file is saved in CAMEO's EDlin directory then click the EDI In button. If the file is saved elsewhere on the system then locate it and highlight the file name. The selection window will show a preview of the syllabuses that are contained within that basedata set (as shown below). At this point click the 'Install' button to load the basedata into CAMEO.



- **Entering Candidates**

Select the 'Candidates' node that appears under the session for which you wish to make entries.



The Data Window will now show you the area into which you enter details of your candidates.

The screenshot shows a software window titled 'Candidates'. It contains three main sections:

- Candidate Identification:** Includes text boxes for 'Candidate Number', 'Name', 'NID', and 'UCI'. There are also dropdown menus for 'Gender' and 'Date of Birth', and a checkbox for 'Chargeable'.
- Additional Information:** Includes a 'Local Fee' text box and a checkbox for 'English first language?'.
- Centre Information:** Includes dropdown menus for 'Centre', 'School', and 'Status'. Below this is a 'Previous Entry Details' dropdown menu showing the text 'Candidate has no previous centre history.'

Click on the 'Insert Item' button at the bottom of the screen and enter the details of your first candidate. CAMEO will automatically apply a candidate number of 0001 for the first candidate. Further candidates will automatically be given the next available number. You can change this to a number of your choice, however please always enter candidate numbers as 4 digits (i.e. 23 is entered as 0023).

The fields on this screen are as follows:

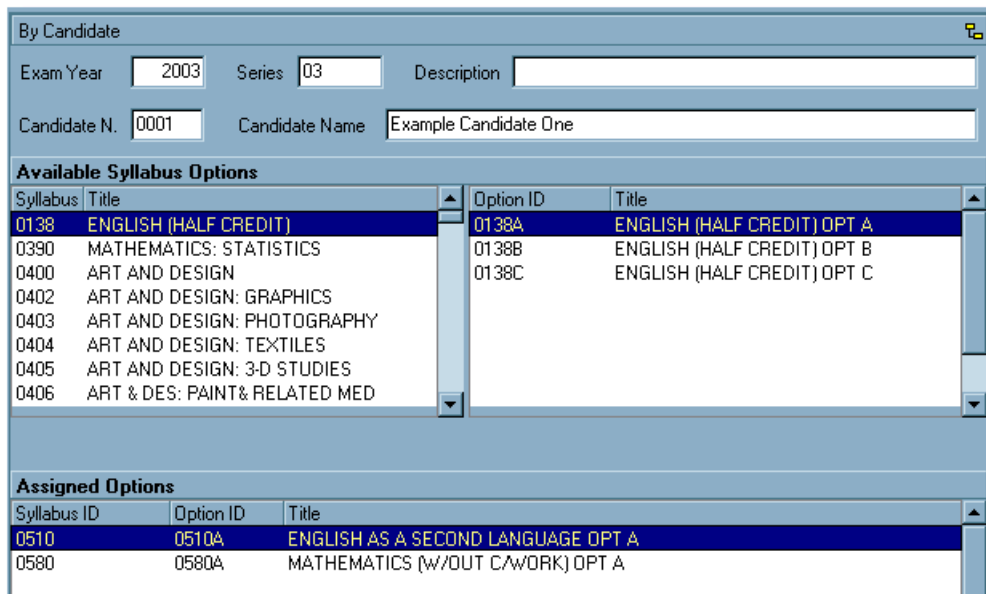
- Name – The maximum number of characters including any spaces is 60. The name of the candidate will appear on entries and results documentation as it is entered here. The centre may wish to enter the name of the candidate as NAME SURNAME or SURNAME: NAME. When using a colon to separate the surname from the name, once the entry is processed, CIE will reverse the order of the names when printing entries and results documentation; e.g. SMITH: JOHN will be printed as JOHN SMITH
- Gender – a drop down list allows you to select Male or Female.
- Date of Birth – candidates' dates of birth should be entered in the date format specified by your Windows Regional Settings. For settings of English (UK) this is dd/mm/yy.
- NID – this is an optional field to allow the entry of a National Identity Number that can be up to 20 characters in length
- Chargeable – a tick in this box indicates you wish a one off entry fee to be applied to the candidate. This is purely used by CAMEO's internal reports and does not affect any data that is transmitted to CIE. The amount can be entered in the Local Fee box on this screen.
- English First Language? – a tick in this box indicates that English is the candidate's first language. This information is only required for candidates taking the Checkpoint examinations.
- School – this will allow you to assign a school sub-code to the candidate. Please note that this feature is only available to certain customers and should not be used without the express prior approval of CIE. Normally all Centres (including attached Centres) should be entered as separate Centres.
- Status – a drop down list allows you to classify a candidate as a 'School' candidate or a 'Private' candidate. The default is 'School' candidate.
- Previous Entry Details – if the candidate is carrying forward any marks or results then select 'Candidate was previously entered at this (or another) Centre' from the drop down list. This will cause 2 new boxes to appear where you can enter the candidate's previous centre and candidate number. Please always enter Centre numbers using uppercase letters.

Enter the details of the candidate and then click the 'Save Insert' button. Repeat this step for all of your candidates. You should always enter candidate number, name, gender and date of birth for your candidates.

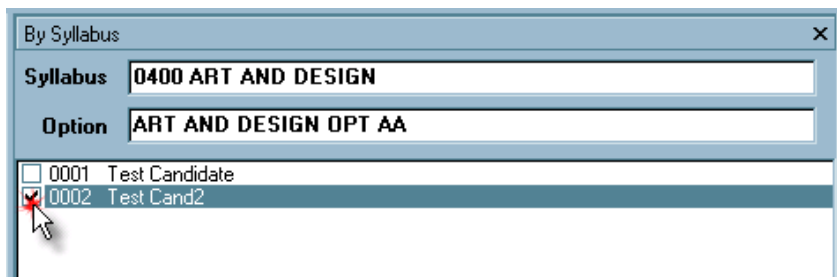
### • Making Entries

There are two options for how you can make your entries:

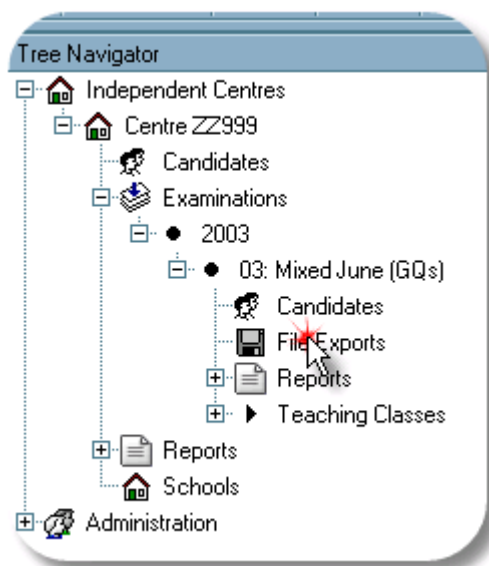
- **By Candidate:** If you wish to make the entries for each candidate individually, then use the Entry by Candidate node. In this screen highlight the required candidate in the 'Selection Window' and then simply select the syllabus/option required in the 'Data Window' on the right. Then click on the 'Insert Item' button and the candidate will be entered for the selected syllabus option (information is automatically saved on this screen so you do not need to press save every time you make an entry).



- By Syllabus:** If you have a number of candidates who are being entered for the same syllabus option(s) then it may be quicker to use the 'Entries by Syllabus' option. In this screen choose the syllabus and option that you require in the 'Selection Window' and then a list of all the candidates in this session will appear in the 'Data Window'. To enter candidates simply click the 'Start Editing' button at the bottom of the screen and then place a tick beside the name of every candidate that you wish to be entered for that syllabus/option. When this is done click on 'Save Edits'.



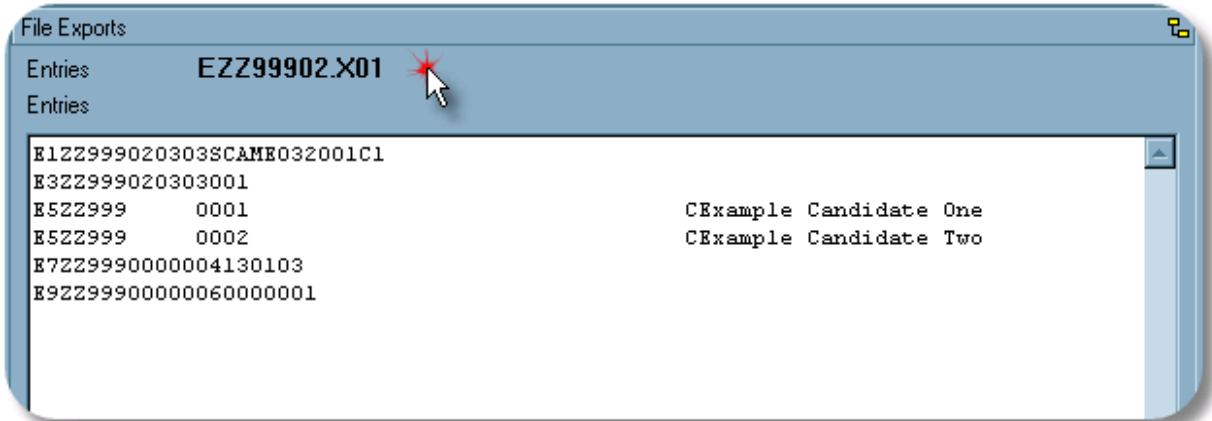
- Exporting Entries**  
 When you have made all your entries in CAMEO then you need to create an entry file that can be uploaded to CIE via the CIE Direct website. We would recommend that you have no programs running except Windows and CAMEO when exporting files. To do this, select the File Exports node on the Tree.



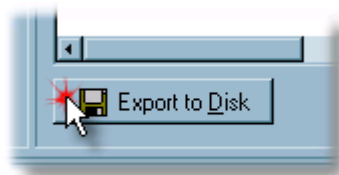
Click on the arrow to the right of the drop down menu in the selection window to bring up the list of export types and then select 'Entries'. You need to select entries from the list even though it will appear in the window when you open the screen.



A preview of your entry file will appear in the 'Data Window'.



Click the Export to Disk button to create the file.



You will be given the option of saving the file to CAMEO's EDIout directory, to a floppy disk or to another location that you can specify. CAMEO will confirm that the entries have been successfully exported.

- **Further User Guides**

There are more user guides detailing CAMEO's functions available for download from the CIE Direct website under the heading 'Support Materials'.

### 8. Preparation of Electronic Entry Files using the Excel based 'CIE Entry Form'

The Centre should submit all entries for a session at once, event if the centre has candidates entering for different qualifications, i.e. candidates entering for IGCSE, GCE O Level and GCE AS & A Level.

Only entries for the Cambridge International Primary Programme and Checkpoint must be submitted on different entry forms.

When you open the CIE Entry Form, you will get a message warning that it contains macros. In order for the form to work, please click 'Enable Macros'. Please note that macros have been created within the CIE Entry Form to allow CIE to process the data more efficiently and accurately; any changes made by the Centre to the format of this entry form will delay the processing of the Centre's entries which could also result in the processing of incorrect entries.

Please complete the CIE Entry Form according to the following instructions that are numbered 1-11 to correspond with column numbers or box numbers on the CIE Entry Form.

1 EXAMINATION OF

Please select the examination session from the drop down menu.

2 CENTRE NUMBER

Insert your Centre Number.

2A SCHOOL NUMBER

Insert your School Number.

3 CENTRE NAME

Insert the name of your Centre in CAPITAL LETTERS.

3A SCHOOL NAME

Insert the name of your School in CAPITAL LETTERS

4 YEAR

Please select the year from the drop down menu, e.g. Chose '0' for the 2010 examination session.

5 CANDIDATE NUMBER

Enter for each candidate the number which you have allocated (see **Candidate Numbering** below).

6 CANDIDATE NAME

Enter in CAPITAL LETTERS each candidate's name.

The maximum number of characters including any spaces is 60. The name of the candidate will appear on entries and results documentation as it is entered here. The centre may wish to enter the name of the candidate as NAME SURNAME or SURNAME: NAME. When using a colon to separate the surname from the name, once the entry is processed, CIE will reverse the order of the names when printing entries and results documentation; e.g. SMITH: JOHN will be printed as JOHN SMITH

7 SEX M/F

Select M for a male candidate or F for a female candidate from the drop down menu.

8 DATE OF BIRTH

Enter the date of birth of each candidate numerically, e.g. for 5 August 1996, enter:

0	5	0	8	9	6
---	---	---	---	---	---

9 CANDIDATE STATUS

For a school candidate: leave blank

For a private candidate: Select P from the drop down menu.

## 10 PREVIOUS ENTRY

Please complete both the previous Centre Number and previous Candidate Number information for all candidates who have previously taken CIE examinations. This is essential information required for candidates entering for a carry forward component, Staged Assessment at GCE AS & A Level or retaking a syllabus. Failure to submit this information may result in the candidate(s) not receiving a result.

**PREVIOUS CENTRE NUMBER:** Enter the Centre Number used in the previous examination.

**PREVIOUS CANDIDATE NUMBER:** Enter the candidate number used in the previous examination.

## 11 SYLLABUS DETAILS

A List of Syllabuses, in alphabetical order, is set out in this booklet. Ensure that each candidate is entered for the correct syllabus/option as follows:

**Syllabus Code:** Enter the 4-figure syllabus code

**Option Code:** Enter the letter option code (where applicable). Candidates making entry for more than 12 syllabuses may be continued on the following line, in which case columns 5-10 on the left hand side of the form should be left blank (i.e. there is no need to repeat the candidate details).

**Re-take?:** Please select Y from the drop down option if the entry is being made for the November examination session for a syllabus that the candidate attempted in the previous June session of the same year.

Examples of entries for various syllabuses are given below:

**Example 1:** English as a Second Language

0510	E	X	components 21, 41 and 5
------	---	---	-------------------------

**Example 2:** Spanish

9719	A	X	All components are compulsory
------	---	---	-------------------------------

**IMPORTANT:** If a candidate is being entered for more than one syllabus, then please make sure that the columns provided for the syllabus code and option code are used in consecutive order regardless of the qualification being entered.

An example of a CIE Form filled in correctly is given in page 13 of this booklet.

## 9. Uploading your entry file to CIE Direct

Once your entry file has been created then you can upload it to CIE via the CIE Direct website. Log in to CIE Direct in the usual way and select 'Examination Processing', 'File Exchange' and 'Upload'. You can then select the entry file that you created, either in Cameo or using the CIE Entry Form, and upload it directly to CIE.

Please note that if you currently submit your entries to another body, such as a local ministry of education, rather than directly to CIE then you should continue to follow this arrangement.

## 10. Candidate Numbering

Centres must allocate a candidate number to each candidate. For each candidate a unique number within the range 1 to 9999 must be used. Candidate numbers need not be consecutive but must be listed in ascending numerical order. All subsequent lists of candidates provided by CIE will be in candidate number order.

## 11. Previous Entry Details

Previous entry details must be supplied for all candidates who are entering for a carry forward component, Staged Assessment at GCE AS & A Level, retaking a syllabus or aggregating for either the ICE Group Award or AICE Diploma.

## 12. Carrying Forward of Marks for IGCSE and GCE O Level

Some IGCSE and GCE O Level syllabuses permit candidates to carry forward school-based assessment, practical and speaking/oral marks once within a thirteen month period, i.e., from June 2009 to June 2010; from November 2009 to June 2010; from November 2009 to November 2010 or from June 2010 to November 2010. The component information column indicates which code should be used for the carrying forward of marks. Examples of two such entries are given below:

Example 1 - FIRST LANGUAGE SPANISH

<b>0502</b>	<b>Z   O</b>	for a candidate entering for components 2, 5 and 84 carrying forward the Coursework Portfolio mark received for component 4 in a previous session
-------------	--------------	---

Example 2 - ENGLISH AS A SECOND LANGUAGE

<b>0510</b>	<b>C   X</b>	for a candidate entering for components 11, 31 and 85 carrying forward the Oral Communication mark received for component 5 in a previous session
-------------	--------------	---

## 13. Entry Amendments

Entry amendments are any changes made to the entries of a Centre after the final entry file is submitted for first time to CIE. These entry amendments can be changes to the option codes of existing entries, addition of syllabus entries to existing candidates, addition of new candidates, withdrawal of candidate/syllabuses or changes to the personal details of the candidates.

If you are using Cameo, when you have made all your amendments in CAMEO then you need to create an amendment file that can be submitted CIE via the CIE Direct website. Once your amendment file has been created then you can upload it to CIE via the CIE Direct website.

If you are using the CIE Entry Form, when making an entry amendment, you must update the original entry form with the necessary amendments and submit the whole form again to CIE. If adding new candidates, allocate a new number and add them at the end of the current list of candidates. Candidate numbers that have already been allocated must not be changed. If you are using the entry form and wish to withdraw entire candidates, you must update the original entry form and submit it to CIE confirming in writing which candidates are being withdrawn from the examination session.

## 14. Entry Exclusions

Candidates may not be entered for in any one examination:

- Subjects with identical titles, at the same qualification level,
- More than one of the alternatives in any subject, except where specified in the Syllabuses.
- Any combination of subjects or papers forbidden by the subject Syllabuses.
- Subjects with identical titles from IGCSE and GCE Ordinary Level.

## 15. Viewing Entries Online

After submitting entries to CIE, you will be able to view your Centre's entries on the CIE Direct website.

To access the website, you will need a username and password. These can be obtained by sending a fax to Customer Services, including your Centre number and the name of the Examinations Officer, to ++44 1223 553558. You will then receive a fax from CIE with your username, password and the website address.

The website is only available to registered Centres and not to students.

The website will show the entries CIE has recorded for your Centre. If there are any amendments that need to be made after viewing the website, you should make the necessary changes either in CAMEO or the CIE Entry Form and submit the entry amendments at your earliest. It is important that all entry amendments are submitted to CIE to ensure that the data held by the Centre matches that held by CIE.

## 16. Documents you will receive as a Result of Making Entries

Centres should **not** assume that their entries have been received and processed by CIE until the documentation listed below has been received. Examples of each document can be found from pages 14-17 of this booklet.

- **Statements of Entry**  
A Statement of Entry for each candidate.
- **Candidate Entry Listing**  
A Candidate Entry Listing showing the entry details of each candidate entered for the examination.
- **Centre Summary of Entries**  
A Centre Summary of Entries showing the total number of examination entries, by syllabus and component.
- **Centre Entry Warning List**  
A Centre Entry Warning List.

It is responsibility of the Centre to check the above documents. If any errors, discrepancies or queries are found then the Centre should contact CIE immediately.





# Statement of Entry

## June 2010

All entry details, including the spelling of your name and date of birth must be checked for accuracy

Candidate Name <b>EXAMPLE CANDIDATE</b>	Date of Birth <b>22 MAY 1993</b>	Centre / Cand. No. <b>XX123/0001</b>
--	-------------------------------------	---

Centre Name <b>EXAMPLE CENTRE</b>	Previous Entry Details <b>XX124/0045</b>	Gender <b>F</b>
--------------------------------------	---	--------------------

Syllabus/Component	Syllabus and Component Titles	Exam Date	Time
<b>IGCSE</b>			
0500/AR	First Language English		
11	Reading Passages (Core)	14 MAY	PM
31	Directed Writing & Composition	21 MAY	PM
0520/BX	French		
11	Listening	19 MAY	PM
21	Reading and Directed Writing	25 MAY	PM
03	Speaking		
41	Continuous Writing	28 MAY	PM
0580/AX	Mathematics (W/out Coursework)		
11	Paper 1 (Core)	12 MAY	AM
31	Paper 3 (Core)	19 MAY	AM
0610/CX	Biology		
11	Multiple Choice	8 JUNE	PM
31	Extended Theory	7 JUNE	PM
61	Alternative to Practical	20 MAY	PM
0625/CX	Physics		
11	Multiple Choice	14 JUNE	PM
31	Extended Theory	27 MAY	PM
61	Alternative to Practical	11 MAY	PM

By entering for these examinations you agree to be bound by CIE rules and regulations for the conduct of examinations. You should read the Notice to Candidates that is printed on the reverse of this document.

Keep this Statement of Entry in a safe place until results are published.

# Candidate Entry Listing

## June 2010

This statement confirms your CIE examination entries accepted for the session shown.

Centre Number	School	Centre Name	Syllabus, Option and Component Details		Syllabus Title	Gender	Date of Birth	S/P
<b>XX123</b>	<b>XX123</b>	<b>EXAMPLE CENTRE</b>						
0001	EXAMPLE CANDIDATE ONE	0500 AR (11 31) 0520 BX (11 21 03 41) 0580 AX (11 31) 0610 CX (11 31 61) 0625 CX (11 31 61)	Syllabus, Option and Component Details		FIRST LANGUAGE ENGLISH FRENCH MATHEMATICS (W/OUT COURSEWORK) BIOLOGY PHYSICS	F	22 MAY 1993	S
0002	EXAMPLE CANDIDATE TWO	0500 AR (11 31) 0520 BX (11 21 03 41) 0580 AX (11 31) 0610 CX (11 31 61) 0625 CX (11 31 61)	Syllabus, Option and Component Details		FIRST LANGUAGE ENGLISH FRENCH MATHEMATICS (W/OUT COURSEWORK) BIOLOGY PHYSICS	M	30 SEP 1994	S

# Centre Summary of Entries June 2010

This list summarises, in syllabus code order, the syllabuses and components for which entries have been submitted by the centre identified below.

Centre Number	School	Centre Name	Component Code / Title	No of Entries
<b>XX123</b>	<b>XX123</b>	<b>EXAMPLE CENTRE</b>		
Qualification	Syllabus Code / Title			
GCE AS & A LEVEL	8682 FRENCH LANGUAGE		01 Speaking 21 Reading & Writing 31 Essay	1 1 1
	8693 ENGLISH LANGUAGE		11 Passages for Comment 21 Composition	1 1
	9709 MATHEMATICS		11 Paper 1 21 Paper 2	4 4
IGCSE	0500 FIRST LANGUAGE ENGLISH		11 Reading Passages (Core) 31 Directed Writing & Composition	10 10
	0520 FRENCH		11 Listening 21 Reading and Directed Writing 03 Speaking 41 Continuous Writing	15 15 15 10
	0580 MATHEMATICS (W/OOUT COURSEWORK)		11 Paper 11 (Core) 21 Paper 21 (Extended) 31 Paper 31 (Core) 41 Paper 41 (Extended)	20 5 20 5

# Centre Entry Warning List June 2010

Centre Number	School	Centre Name
XX123	XX123	EXAMPLE CENTRE
<b>Warning Message</b>		
<b>Timetable Clash Analysis</b>		
<b>Candidate Number</b>	<b>Date</b>	
0007	<b>24 May 10 pm</b> 0460 (41) with 0470(21)	
0008	<b>28 May 10 pm</b> 0450 (21) with 0520 (41)	
0013	0450 (21) with 0520 (41)	
0025	0450 (21) with 0520 (41)	
0105	<b>10 June pm</b> 9700 (11) with 9695 (51)	

## Entering for an Examination

### A notice to candidates

Before your school submits its entries to CIE, you will be asked to check your entry and confirm that it is correct.

You must pay particular attention to the following points:

A Are your first forename and family name correctly spelt, and are the initials of your other forenames correctly shown? This is most important, because certificates show the names given on the entry form. Centre and candidate details including the spelling of name and date of birth must be checked when Statements of Entry (and Statements of Result) are issued. Any inaccuracies must be reported to CIE immediately upon discovery and prior to the issue of certificates. A fee will be charged for issuing a replacement certificate due to incorrect candidate and/or Centre details. This service is available only within 18 months of the date of issue of the original certificate.

B Are your date of birth and your sex code correctly shown?

C Have you been entered for all the syllabuses you are taking and for the correct components within each syllabus? You should pay particular attention to your entry for syllabuses where there are alternative syllabuses.

D Is the total number of syllabuses you are taking shown correctly?

You must realise that in checking and signing for your entry you are taking responsibility for its accuracy. You will not be permitted to make changes later.

***A copy of this notice should be displayed where candidates can read it, or it should otherwise be brought to their attention before they check their entries.***



UNIVERSITY of CAMBRIDGE  
International Examinations

# CAMBRIDGE INTERNATIONAL PRIMARY PROGRAMME

The Cambridge International Primary Programme gives schools a framework to develop Mathematics, English, Science skills and above all knowledge in young children. The Primary Programme provides guidance for curriculum development, classroom teaching and learning, and allows teachers to assess children's learning as they progress.

The benefits of the Cambridge International Primary Programme are:

- **Foundation for secondary education**  
The Primary Programme aids identification of a student's strengths and weaknesses and can be used to support learning and development. The Primary Programme progresses students seamlessly into middle years curricula, such as Cambridge Checkpoint and IGCSE.
- **External benchmark**  
As an international programme, the Primary Programme provides teachers with an external benchmark to inform their teaching and easily measure students' progress over time. It also allows detailed, structured reporting to parents.
- **International curriculum**  
Appropriate and relevant internationally, the Primary Programme has been designed to be culturally sensitive. It includes top-quality teaching and assessment resources appropriate for teaching and learning in local and international schools.
- **Flexibility**  
The Primary Programme complements a range of teaching methods and curricula. No part of the programme is compulsory and Centres are at liberty to choose the parts that best suit their situation.

For more information on the Cambridge International Primary Programme please refer to the Primary Curriculum Framework.

## **Cambridge International Primary Programme – Submission of Entries**

The procedures explained on pages 3 to 18 should be followed.

## **Cambridge International Primary Programme Syllabuses in June 2010**

Find below the key to all Cambridge International Primary Achievement Tests available in June 2010, in alphabetical order.

**KEY TO CAMBRIDGE INTERNATIONAL PRIMARY PROGRAMME SYLLABUSES (in alphabetical order):**

<b>SYLLABUS NAME AND CODE</b>	<b>COMPONENT INFORMATION</b>	<b>DURATION</b>	<b>OPTION CODE</b>	<b>NOTES</b>
<b>ENGLISH</b> <b>0841</b>	1: CIPAT English Paper 1	1h		
	2: CIPAT English Paper 2	1h		
			<b>Option Code</b> <b>Leave Blank</b>	<b>Components</b> 1, 2
<b>MATHEMATICS</b> <b>0842</b>	1: CIPAT Mathematics Paper 1	45m		
	2: CIPAT Mathematics Paper 2	45m		
	3: CIPAT Mental Mathematics	15m	<b>Option Code</b> <b>Leave Blank</b>	<b>Components</b> 1, 2, 3
<b>SCIENCE</b> <b>0843</b>	1: CIPAT Science Paper 1	45m		
	2: CIPAT Science Paper 2	45m		
			<b>Option Code</b> <b>Leave Blank</b>	<b>Components</b> 1, 2

# CHECKPOINT

A unique service and an invaluable tool for schools and colleges, Checkpoint enables access to standardised tests that provide feedback on a student's strengths and weaknesses in key curriculum areas. Feedback of this kind is an invaluable source of information. Schools and colleges will be able to make strategic decisions, drawing upon a pool of information and specialist reporting tools built into Checkpoint. Students at international schools will have a transferable indication of their academic progress. Rapid turnaround of feedback, within four weeks of receipt of the scripts, will ensure that the information returned can be put to immediate use.

Cambridge Checkpoint tests are available in English, Mathematics and Science and are offered in May and October. The service is aimed at students of approximately 14 years of age studying mid-secondary curriculum. The tests cover all major areas of learning required in the first years of an international secondary education. It is these topics and sub-topics that provide the framework for feedback on each student.

Feedback comes in four forms: reports on each Candidate, on each Teaching Group (if applicable), on the Centre, and (at the end of the session) on the entire cohort. When making entries, candidates should be entered under separate Teaching Groups if you wish to receive reports on these groups. The information on English language background is needed for the end-of session report on all Centres.

For more information on the Checkpoint syllabuses please refer to each of the curriculum frameworks.

## **Checkpoint – Submission of Teaching Group Titles**

Teaching Group Titles are submitted on form CP/E.2; an electronic copy of this form can be found on CIE Direct under 'Support Materials'. Also a blank copy of this form is shown on page 23 of this booklet.

Against each Teaching Group Code for which you have entered candidates, write the Teaching Group Title as you wish it to appear on the Checkpoint Performance Feedback documentation.

Once the form has been filled in, electronic forms should be sent to CIE by uploading the form onto CIE Direct. Alternatively hardcopies may be faxed to CIE.

## **Checkpoint – Submission of Entries**

The procedures explained on pages 3 to 18 should be followed.

## **Checkpoint Syllabuses in May 2010**

Find below the key to all Checkpoint syllabuses available in May 2010, in alphabetical order.

KEY TO CHECKPOINT SYLLABUSES (in alphabetical order):

SYLLABUS NAME AND CODE	COMPONENT INFORMATION	DURATION	OPTION CODE	NOTES
<b>ENGLISH</b> 1111	1: Paper 1 2: Paper 2	1h07m 1h07m		Both components are compulsory.
			<b>Option Code</b>	<b>Components</b>
			<b>Leave Blank</b>	1, 2
<b>MATHEMATICS</b> 1112	1: Paper 1 (Non-calculator) 2: Paper 2 (Calculator)	1h 1h		Both components are compulsory.
			<b>Option Code</b>	<b>Components</b>
			<b>Leave Blank</b>	1, 2
<b>SCIENCE</b> 1113	1: Paper 1 2: Paper 2	45m 45m		Both components are compulsory.
			<b>Option Code</b>	<b>Components</b>
			<b>Leave Blank</b>	1, 2

# CHECKPOINT TEACHING GROUP INFORMATION

Centre Number

--	--	--	--

Centre Name

--

Examination Session

*May *October
------------------

Year

--	--	--	--

\*Delete as appropriate

## Instructions

Against each Teaching Group Code for which you have entered candidates, write the Teaching Group Title as you wish it to appear on the Checkpoint Performance Feedback. Once the form has been filled in, electronic forms should be sent to CIE by uploading the form onto CIE Direct. Alternatively hardcopies may be faxed to CIE.

English	
Teaching Group Code	Teaching Group Title
E1	
E2	
E3	
E4	
E5	
E6	
E7	
E8	
E9	
E10	

Mathematics	
Teaching Group Code	Teaching Group Title
M1	
M2	
M3	
M4	
M5	
M6	
M7	
M8	
M9	
M10	

Science	
Teaching Group Code	Teaching Group Title
S1	
S2	
S3	
S4	
S5	
S6	
S7	
S8	
S9	
S10	

Photocopy as required

Signature of Head/Principal

--

Date

--	--	--	--



# INTERNATIONAL GENERAL CERTIFICATE OF SECONDARY EDUCATION (IGCSE)

The International General Certificate of Secondary Education (IGCSE) is a curriculum and assessment system, suitable for schools and colleges around the world. The IGCSE programme from CIE brings out the best in students and develops successful learners through a skills-based approach to teaching and assessing. Students who attain IGCSE qualifications are well educated, adaptable and thoroughly prepared for their next steps in education and employment, including progression to AS and A Level study

IGCSE provides a broad study programme by drawing subjects from five areas: Languages, Humanities, Social Sciences, Mathematics, Creative, Technical and Vocational. Within the curriculum there is a balanced mix of practical experience and theoretical knowledge. CIE provides a choice of core and extended papers in most subjects. The extended level is designed to stretch the most capable students.

The IGCSE is an internally based curriculum allowing teaching to be placed in a localised context, making it relevant in different regions. It is also suitable for students whose first language may not be English and this is acknowledged throughout the examination progress. IGCSEs are internationally recognised by schools, universities and employers as equivalent in standard to the British GCSE and International O Level examinations.

## **General Coursework (School-based assessment)**

Coursework refers to any component specified by a CIE syllabus that is assessed in the Centre by the Centre's teachers or other local teachers and moderated by CIE. Examples of such Coursework are:

- projects
- folios of essays
- field work
- art and craft items
- design studies
- internally set and assessed Speaking Tests
- practical work assignments and experiments undertaken and assessed during the course.

Coursework may include work for which the theme, experiment or parameters of a project have been set by the teacher, or specified in the syllabus, or chosen by candidates themselves.

Centres requiring further information regarding Coursework and its regulations should refer to the CIE Handbook for Centres: Part 4.

## **International Certificate of Education (ICE)**

ICE is the Group Award that requires the study of subjects drawn from five different IGCSE subject groups. It gives schools the opportunity to benefit from offering a broad and balanced curriculum by recognizing the achievements of students who pass examinations in at least seven subjects, including two languages and one subject from each of the other subject groups.

For the procedures on how to enter candidates for the International Certificate of Education (ICE) please refer to page 45 of this booklet.

## **IGCSE – Submission of Entries**

The procedures explained on pages 3 to 18 should be followed.

## **IGCSE Syllabuses in June 2010**

Find below the key to all IGCSE syllabuses available in June 2010, in alphabetical order.

KEY TO IGCSE SYLLABUSES (in alphabetical order):

SYLLABUS NAME AND CODE	COMPONENT INFORMATION	DURATION	WEIGHTING	OPTION CODE	NOTES	ACCESS TO GRADES
<b>ACCOUNTING</b> 0452	11: Multiple Choice 21: Paper 2	1h 1h30m	50% 50%		May not be taken in the same examination session as 7110.	Core Extended A* to C
				<b>Option Code</b> AX	<b>Components</b> 11, 21	
<b>ADDITIONAL MATHEMATICS</b> 0606	11: Paper 1 21: Paper 2	2h 2h	50% 50%		May not be taken in the same examination session as 4037.	Extended A* to E
				<b>Option Code</b> AX	<b>Components</b> 11, 21	
<b>ARABIC</b> 0544	2: Reading and Directed Writing 3: Speaking 4: Continuous Writing	1h30m 15m 1h15m	Core 54% - Ext. 35% Core 46% - Ext. 30% Extended 35%		May not be taken in the same examination session as 0508	Core Extended A* to G
				<b>Option Code</b> A B	<b>Components</b> 2, 3 (Core) 2, 3, 4 (Extended)	
<b>ART AND DESIGN</b> 0400	1: Observational/Interpretative Assignment 2: Design Assignment 3: Critical and Historical Assignment 4: Coursework Assignment	8hrs 8hrs - -	50% 50% 50% 50%		May not be taken in the same examination session as 6010. Options C and E are not available to private candidates	All grades A* to G are available
				<b>Option Code</b> A B C D E	<b>Components</b> 1, 2 1, 3 1, 4 2, 3 2, 4	

KEY TO IGCSE SYLLABUSES (in alphabetical order):

SYLLABUS NAME AND CODE	COMPONENT INFORMATION	DURATION	WEIGHTING	OPTION CODE	NOTES	ACCESS TO GRADES
<b>BANGLADESH STUDIES 0449</b>	1: History and Culture of Bangladesh 2: Environment and Development of Bangladesh	1h30m	50%		May not be taken in the same examination session as 7094. <b>Components</b> 1, 2	All grades A* to G are available
		1h30m	50%	<b>Option Code</b> Leave Blank		
<b>BIOLOGY 0610</b>	11: Multiple Choice	45m	30%		Options AX and EX not available to private candidates. May not be taken in the same examination session as 0653, 0654, 5090, 5096, 5125, 5126, 5129, 5130. <b>Components</b> 11, 31, 4 (Extended) 11, 31, 51 (Extended) 11, 31, 61 (Extended) 11, 31, 84 (Extended) 11, 21, 4 (Core) 11, 21, 51 (Core) 11, 21, 61 (Core) 11, 21, 84 (Core)	Core Extended A* to G
	21: Core Theory	1h15m	50%			
	31: Extended Theory	1h15m	50%			
	4: Coursework	-	20%			
	51: Practical Test	1h	20%			
	61: Alternative to Practical	1h	20%			
	84: Coursework Mark Carried Forward	-	20%			
				<b>Option Code</b>		
				<b>AX</b>		
				<b>BX</b>		
			<b>CX</b>			
			<b>DX</b>			
			<b>EX</b>			
			<b>FX</b>			
			<b>GX</b>			
			<b>HX</b>			
<b>BUSINESS STUDIES 0450</b>	11: Short Answer/Structured Response	1h45m	50% Without CW	40% With CW	Option BX not available to private candidates. May not be taken in the same examination session as 7115. <b>Components</b> 11, 21 11, 21, 3 11, 21, 83	All grades A* to G are available
	21: Case Study	1h45m	50% Without CW	40% With CW		
	3: Coursework	-	20%			
	83: Coursework Mark Carried Forward	-	20%			
				<b>Option Code</b>		
				<b>AX</b>		
			<b>BX</b>			
			<b>CX</b>			

KEY TO IGCSE SYLLABUSES (in alphabetical order):

SYLLABUS NAME AND CODE	COMPONENT INFORMATION	DURATION	WEIGHTING	OPTION CODE	NOTES	ACCESS TO GRADES	
<b>CHEMISTRY</b> <b>0620</b>	11: Multiple Choice	45m	20%		Options AX and EX not available to private candidates. May not be taken in the same examination session as 0652, 0653, 0654, 5070, 5124, 5126, 5129, 5130.	Core Extended A* to G	
	21: Core Theory	1h15m	30%				
	31: Extended Theory	1h15m	20%				
	4: Coursework	-	50%				
	51: Practical	1h15m	50%				
	61: Alternative to Practical	1h	20%				
	84: Coursework Mark Carried Forward	-	20%				
				<b>Option Code</b>			
				<b>AX</b>			11, 31, 4 (Extended)
				<b>BX</b>			11, 31, 51 (Extended)
			<b>CX</b>	11, 31, 61 (Extended)			
			<b>DX</b>	11, 31, 84 (Extended)			
			<b>EX</b>	11, 21, 4 (Core)			
			<b>FX</b>	11, 21, 51 (Core)			
			<b>GX</b>	11, 21, 61 (Core)			
			<b>HX</b>	11, 21, 84 (Core)			
<b>CHILD DEVELOPMENT</b> <b>0637</b>	1: Theory Paper	2h	50%		Not available to private candidates	All grades A* to G are available	
	2: Coursework (Child Study)	-	25%				
	3: Coursework (Practical Investigation)	-	25%				
	82: Coursework (Child Study)	-	25%				
	Mark Carried Forward						
	83: Coursework (Practical Investigation)	-	25%				
	Mark Carried Forward						
			<b>Option Code</b>				
			<b>A</b>	1, 2, 3			
			<b>B</b>	1, 2, 83			
			<b>C</b>	1, 3, 82			
			<b>D</b>	1, 82, 83			
<b>COMBINED SCIENCE</b> <b>0653</b>	11: Multiple Choice	45m	30%		Options AX, DX, EX, HX not available to private candidates. May not be taken in the same examination session as 0610, 0620, 0625, 0652, 0654, 5054, 5070, 5090, 5096, 5124, 5125, 5126, 5129, 5130.	Core Extended A* to G	
	21: Core Theory	1h15m	50%				
	31: Extended Theory	1h15m	50%				
	4: Coursework	-	20%				
	51: Practical Test	1h30m	20%				
	61: Alternative to Practical	1h	20%				
	84: Coursework Mark Carried Forward	-	20%				
				<b>Option Code</b>			
				<b>AX</b>			11, 31, 4 (Extended)
				<b>BX</b>			11, 31, 51 (Extended)
			<b>CX</b>	11, 31, 61 (Extended)			
			<b>DX</b>	11, 31, 84 (Extended)			
(continued)							

KEY TO IGCSE SYLLABUSES (in alphabetical order):

SYLLABUS NAME AND CODE	COMPONENT INFORMATION	DURATION	WEIGHTING	OPTION CODE	NOTES	ACCESS TO GRADES
<b>COMBINED SCIENCE</b> 0653 (continued)				<b>Option Code</b>	<b>Components</b>	
				EX	11, 21, 4 (Core)	
				FX	11, 21, 51 (Core)	
				GX	11, 21, 61 (Core)	
				HX	11, 21, 84 (Core)	
<b>COMPUTER STUDIES</b> 0420	11: Paper 1	2h30m	75%		Option A not available to private candidates.	All grades A* to G are available
	2: Coursework (Project)	-	25%		May not be taken in the same examination session as 7010, 0417.	
	82: Coursework (Project) Mark Carried Forward	-	25%			
				<b>Option Code</b>	<b>Components</b>	
				AX	11, 2	
			BX	11, 82		
<b>CO-ORDINATED SCIENCES (DOUBLE AWARD)</b> 0654	11: Multiple Choice	45m	30%		Options AX and EX not available to private candidates.	Core Extended A*A* to GG
	21: Core Theory	2h	50%		May not be taken in the same examination session as 0610, 0620, 0625, 0652, 0653, 5054, 5070, 5090, 5096, 5124, 5125, 5126, 5129, 5130.	
	31: Extended Theory	2h	50%			
	4: Coursework	-	20%			
	51: Practical	2h	20%			
	61: Alternative to Practical	1h	20%			
	84: Coursework Mark Carried Forward	-	20%			
				<b>Option Code</b>	<b>Components</b>	
				AX	11, 31, 4 (Extended)	
				BX	11, 31, 51 (Extended)	
				CX	11, 31, 61 (Extended)	
				DX	11, 31, 84 (Extended)	
			EX	11, 21, 4 (Core)		
			FX	11, 21, 51 (Core)		
			GX	11, 21, 61 (Core)		
			HX	11, 21, 84 (Core)		

KEY TO IGCSE SYLLABUSES (in alphabetical order):

SYLLABUS NAME AND CODE	COMPONENT INFORMATION	DURATION	WEIGHTING	OPTION CODE	NOTES	ACCESS TO GRADES
<b>DESIGN AND TECHNOLOGY</b> <b>0445</b>	11: Design 21: Graphic Products 31: Resistant Materials 41: Systems and Control 5: School Based Assessment 86: School Based Assessment Mark Carried Forward	1h15m 1h 1h 1h - -	25% 25% 25% 25% 50% 50%	<b>Option Code</b> AX CX EX GX HX IX	Not available to private candidates. May not be taken in the same examination session as 6043. <b>Components</b> 11, 21, 5 11, 31, 5 11, 41, 5 11, 21, 86 11, 31, 86 11, 41, 86	All grades A* to G are available
<b>DRAMA</b> <b>0411</b>	11: Written Examination 2: Coursework	2h30m -	40% 60%	<b>Option Code</b> AX TX	Not available to private candidates. Option TX should only be entered if candidates are going to be entering for Paper 2 in November. <b>Components</b> 11, 2 11 only	All grades A* to G are available
<b>DUTCH</b> <b>0515</b>	1: Listening 2: Reading and Directed Writing 3: Speaking 4: Continuous Writing	c.45m 1h30m 15m 1h15m	25% 25% 25% 25%	<b>Option Code</b> A B	May not be taken in the same examination session as 0503. <b>Components</b> 1, 2, 3 (Core) 1, 2, 3, 4 (Extended)	Core Extended A* to G
<b>ECONOMICS</b> <b>0455</b>	11: Multiple Choice 21: Structured Questions 31: Analysis and Critical Evaluation	45m 2h 1h30m	20% 50% 30%	<b>Option Code</b> AX	May not be taken in the same examination session as 2281. <b>Components</b> 11, 21, 31	All grades A* to G are available

KEY TO IGCSE SYLLABUSES (in alphabetical order):

SYLLABUS NAME AND CODE	COMPONENT INFORMATION	DURATION	WEIGHTING	OPTION CODE	NOTES	ACCESS TO GRADES
<b>ENGLISH AS A SECOND LANGUAGE 0510</b>	11: Reading and Writing (Core)	1h30m	70%		Options BX and FX not available to private candidates. May not be taken in the same examination session as 0500, 1123, 1115, 1220, 1230. <b>Components</b> 11, 31, 5 (Core) 11, 31, 6 (Core) 11, 31, 85 (Core) 11, 31, 86 (Core) 21, 41, 5 (Extended) 21, 41, 6 (Extended) 21, 41, 85 (Extended) 21, 41, 86 (Extended)	Core Extended A* to E
	21: Reading and Writing (Extended)	2h	70%			
	31: Listening (Core)	c.40m	30%			
	41: Listening (Extended)	c.45m	30%			
	5: Oral Communication	c.15m	-			
	6: Oral Communication (Coursework)	-	-			
	85: Oral Communication Mark Carried Forward	-	-	<b>Option Code</b>		
	86: Oral Communication Mark Carried Forward	-	-	AX		
				BX		
				CX		
			DX			
			EX			
			FX			
			GX			
			HX			
<b>ENVIRONMENTAL MANAGEMENT 0680</b>	11: Paper 1	1h30m	30%		Options AX and CX not available to private candidates. May not be taken in the same examination session as 5014. <b>Components</b> 11, 21, 3 11, 21, 41 11, 21, 83	All grades A* to G are available
	21: Paper 2	1h45m	40%			
	3: Coursework	-	30%			
	41: Alternative To Coursework	1h30m	30%			
	83: Coursework Mark Carried Forward	-	30%			
				<b>Option Code</b>		
			AX			
			BX			
			CX			
<b>FIRST LANGUAGE ARABIC 0508</b>	1: Reading	2h	50%		May not be taken in the same examination session as 0544 <b>Components</b> 1, 2	All grades A* to G are available
	2: Writing	2h	50%			
				<b>Option Code</b>		
			Leave Blank			
<b>FIRST LANGUAGE CHINESE 0509</b>	1: Reading	2h	60%		May not be taken in the same examination session as 0547. <b>Components</b> 2, 3	All grades A* to G are available
	2: Writing	1h15m	40%			
				<b>Option Code</b>		
			Leave Blank			

KEY TO IGCSE SYLLABUSES (in alphabetical order):

SYLLABUS NAME AND CODE	COMPONENT INFORMATION	DURATION	WEIGHTING	OPTION CODE	NOTES	ACCESS TO GRADES
<b>FIRST LANGUAGE CZECH 0514</b>	1: Reading	2h	50%		All grades A* to G are available	
	2: Writing	2h	50%	Option Code Leave Blank		
<b>FIRST LANGUAGE DUTCH 0503</b>	1: Reading	2h	50%		May not be taken in the same examination session as 0515.	All grades A* to G are available
	2: Writing	2h	50%	Option Code Leave Blank		
<b>FIRST LANGUAGE ENGLISH 0500</b>	11: Reading Passage (Core)	1h45m	50%		Options AS, AT, BR, BS, BT, CS, CT, DR, DS, DT, ES, ET, FS, FT are not available to private candidates. May not be taken in the same examination session as 0510, 1115, 1123, 1220, 1230.	Core Extended A* to E
	21: Reading Passages (Extended)	2h	50%			
	31: Directed Writing & Composition	2h	50%			
	4: Coursework Portfolio	-	50%			
	5: Speaking & Listening	c.12m				
	6: Speaking & Listening (Coursework)	-				
	84: Coursework Portfolio (Mark Carried Forward)	-				
				<b>Option Code</b>	<b>Components</b>	
				AR	11, 31 (Core)	
				AS	11, 31, 5 (Core)	
				AT	11, 31, 6 (Core)	
				BR	11, 4 (Core)	
				BS	11, 4, 5 (Core)	
				BT	11, 4, 6 (Core)	
				CR	21, 31 (Extended)	
				CS	21, 31, 5 (Extended)	
				CT	21, 31, 6 (Extended)	
				DR	21, 4 (Extended)	
				DS	21, 4, 5 (Extended)	
				DT	21, 4, 6 (Extended)	
				ER	11, 84 (Core)	
				ES	11, 5, 84 (Core)	
				ET	11, 6, 84 (Core)	
				FR	21, 84 (Extended)	
				FS	21, 5, 84 (Extended)	
				FT	21, 6, 84 (Extended)	

KEY TO IGCSE SYLLABUSES (in alphabetical order):

SYLLABUS NAME AND CODE	COMPONENT INFORMATION	DURATION	WEIGHTING	OPTION CODE	NOTES	ACCESS TO GRADES
<b>FIRST LANGUAGE FRENCH 0501</b>	1: Reading	2h	50%		May not be taken in the same examination session as 0520, 3015.	All grades A* to G are available
	2: Writing	2h	50%			
				<b>Option Code</b>	<b>Components</b>	
				<b>Leave Blank</b>	1, 2	
<b>FIRST LANGUAGE GERMAN 0505</b>	1: Reading	2h	50%		May not be taken in the same examination session as 0525.	All grades A* to G are available
	2: Writing	2h	50%			
				<b>Option Code</b>	<b>Components</b>	
				<b>Leave Blank</b>	1, 2	
<b>FIRST LANGUAGE JAPANESE 0507</b>	2: Reading and Directed Writing	2h15m	60%			All grades A* to G are available
	3: Continuous Writing	1h15m	40%			
				<b>Option Code</b>	<b>Components</b>	
				<b>Leave Blank</b>	2, 3	
<b>FIRST LANGUAGE KOREAN 0521</b>	1: Reading	2h	50%			All grades A* to G are available
	2: Writing	2h	50%			
				<b>Option Code</b>	<b>Components</b>	
				<b>Leave Blank</b>	1, 2	
<b>FIRST LANGUAGE PORTUGUESE 0504</b>	1: Reading	2h	50%		May not be taken in the same examination session as 0540.	All grades A* to G are available
	2: Writing	2h	50%			
				<b>Option Code</b>	<b>Components</b>	
				<b>Leave Blank</b>	1, 2	
<b>FIRST LANGUAGE RUSSIAN 0516</b>	1: Reading	2h	50%			All grades A* to G are available
	2: Writing	2h	50%			
				<b>Option Code</b>	<b>Components</b>	
				<b>Leave Blank</b>	1, 2	

KEY TO IGCSE SYLLABUSES (in alphabetical order):

SYLLABUS NAME AND CODE	COMPONENT INFORMATION	DURATION	WEIGHTING	OPTION CODE	NOTES	ACCESS TO GRADES	
<b>FIRST LANGUAGE SPANISH 0502</b>	1: Reading Passage (Core) 2: Reading Passages (Extended) 3: Directed Writing & Composition 4: Coursework Portfolio 5: Speaking/Listening 84: Coursework Portfolio Carried Forward	1h45m 2h 2h - c.12m -	50% 50% 50% 50% - -		Options AO, B, BO, CO, D, DO, YO, ZO are not available to private candidates. May not be taken in the same examination session as 0530, 3035.	Core Extended A* to E	
				<b>Option Code</b>	<b>Components</b>		
				A	1, 3 (Core)		
				AO	1, 3, 5 (Core)		
				B	1, 4 (Core)		
				BO	1, 4, 5 (Core)		
				C	2, 3 (Extended)		
				CO	2, 3, 5 (Extended)		
				D	2, 4 (Extended)		
				DO	2, 4, 5 (Extended)		
Y	1, 84 (Core)						
YO	1, 5, 84 (Core)						
Z	2, 84 (Extended)						
ZO	2, 5, 84 (Extended)						
<b>FIRST LANGUAGE THAI 0518</b>	2: Reading and Directed Writing 3: Continuous Writing	2h15m 1h15m	60% 40%			All grades A* to G are available	
				<b>Option Code</b>			<b>Components</b>
				Leave Blank			2, 3
<b>FIRST LANGUAGE TURKISH 0513</b>	1: Reading 2: Writing	2h 2h	50% 50%			All grades A* to G are available	
				<b>Option Code</b>			<b>Components</b>
				Leave Blank			1, 2
<b>FOOD AND NUTRITION 0648</b>	1: Theory 2: Practical	2h 2h30m	50% 50%		The Practical Component is preceded by a planning period of 1h30m. May not be taken in the same examination session as 6065.	All grades A* to G are available	
				<b>Option Code</b>			<b>Components</b>
				Leave Blank			1, 2

KEY TO IGCSE SYLLABUSES (in alphabetical order):

SYLLABUS NAME AND CODE	COMPONENT INFORMATION	DURATION	WEIGHTING	OPTION CODE	NOTES	ACCESS TO GRADES
<b>FRENCH</b> <b>0520</b>	11: Listening	c.45m	25%		May not be taken in the same examination session as 0501, 3015.	Core Extended A* to G
	21: Reading and Directed Writing	1h30m	25%			
	3: Speaking	15m	25%			
	41: Continuous Writing	1h15m	25%			
	83: Speaking Mark Carried Forward	-	25%			
				<b>Option Code</b>	<b>Components</b>	
				<b>AX</b>	11, 21, 3 (Core)	
				<b>BX</b>	11, 21, 3, 41 (Extended)	
				<b>DX</b>	11, 21, 41, 83 (Extended)	
				<b>GX</b>	11, 21, 83 (Core)	
<b>GEOGRAPHY</b> <b>0460</b>	11: Paper 1	1h45m	45%		Options AX, DX not available to private candidates. May not be taken in the same examination session as 2227.	All grades A* to G are available
	21: Paper 2	1h30m	27.5%			
	3: Coursework	-	27.5%			
	41: Alternative to Coursework	1h30m	27.5%			
	5: Computer Based	1h30m	27.5%			
	Alternative to Coursework	-				
	83: Coursework Mark Carried Forward	-	27.5%			
				<b>Option Code</b>	<b>Components</b>	
				<b>AX</b>	11, 21, 3	
				<b>BX</b>	11, 21, 41	
				<b>CX</b>	11, 21, 83	
				<b>DX</b>	11, 21, 41, 5	
<b>GERMAN</b> <b>0525</b>	1: Listening	c.45m	25%		May not be taken in the same examination session as 0505.	Core Extended A* to G
	2: Reading and Directed Writing	1h30m	25%			
	3: Speaking	15m	25%			
	4: Continuous Writing	1h15m	25%			
	83: Speaking Mark Carried Forward	-	25%			
				<b>A</b>	1, 2, 3 (Core)	
				<b>B</b>	1, 2, 3, 4 (Extended)	
				<b>D</b>	1, 2, 4, 83 (Extended)	
				<b>G</b>	1, 2, 83 (Core)	
<b>GLOBAL PERSPECTIVES</b> <b>0457</b>	1: Portfolio	-	50%			All grades A* to G are available
	2: Project	-	20%			
	3: Written Paper	2h	30%			
				<b>Leave Blank</b>	1, 2, 3	

KEY TO IGCSE SYLLABUSES (in alphabetical order):

SYLLABUS NAME AND CODE	COMPONENT INFORMATION	DURATION	WEIGHTING	OPTION CODE	NOTES	ACCESS TO GRADES	
<b>GREEK</b> 0543	2: Reading & Directed Writing 3: Speaking 4: Continuous Writing	1h30m	Core 54% - Ext. 35% Core 46% - Ext. 30% Extended 35%		Core Extended A* to G		
		15m		<b>Option Code</b>			<b>Components</b>
		1h15m		<b>A</b>	2, 3 (Core)		
				<b>B</b>	2, 3, 4 (Extended)		
<b>HINDI AS A SECOND LANGUAGE</b> 0549	1: Reading and Writing 2: Listening	2h	67%		All grades A* to G are available		
		45m	33%	<b>Option Code</b>			<b>Components</b>
				<b>A</b>	1, 2		
<b>HISTORY</b> 0470	11: Paper 1 21: Paper 2 3: Coursework 41: Alternative to Coursework 83: Coursework Mark Carried Forward	2h	40%		Option AX not available to private candidates. May not be taken in the same examination session as 2160.	All grades A* to G are available	
		2h	33%	<b>Option Code</b>			<b>Components</b>
		-	27%	<b>AX</b>			11, 21, 3
		1h	27%	<b>BX</b>			11, 21, 41
		-	27%	<b>CX</b>			11, 21, 83
<b>INFORMATION AND COMMUNICATION TECHNOLOGY</b> 0417	11: Written 2: Practical Test A 3: Practical Test B	2h	40%		May not be taken in the same examination session as 0420, 7010.	All grades A* to G are available	
		2h30m	30%	<b>Option Code</b>			<b>Components</b>
		2h30m	30%	<b>AX</b>			11, 2, 3
<b>LATIN</b> 0480	1: Language 2: Literature	1h30m	50%		All grades A* to G are available		
		1h30m	50%	<b>Option Code</b>			<b>Components</b>
				<b>A</b>	1, 2		

KEY TO IGCSE SYLLABUSES (in alphabetical order):

SYLLABUS NAME AND CODE	COMPONENT INFORMATION	DURATION	WEIGHTING	OPTION CODE	NOTES	ACCESS TO GRADES
<b>LITERATURE (ENGLISH) 0486</b>	11: Paper 1 (Open Books) 2: Coursework 31: Alternative to Coursework 41: Set Texts: Closed Books-A 51: Set Texts: Closed Books-B 82: Coursework Mark Carried Forward	2h15m - 1h20m 2h40m 45m -	70% 30% 30% 75% 25% 30%		Option AX not available to private candidates. May not be taken in the same examination session as 2010. <b>Option Code</b> AX BX CX DX	All grades A* to G are available
					<b>Components</b> 11, 2 11, 31 11, 82 41, 51	
<b>LITERATURE (SPANISH) 0488</b>	1: Paper 1 (Open Books) 2: Coursework 3: Alternative to Coursework 82: Coursework Mark Carried Forward	2h15m - 1h -	70% 30% 30% 30%		Option A not available to private candidates. <b>Option Code</b> A B C	All grades A* to G are available
					<b>Components</b> 1, 2 1, 3 1, 82	
<b>MALAY 0546</b>	2: Reading and Directed Writing 3: Speaking 4: Continuous Writing	1h30m 15m 1h15m	35% 30% 35%		<b>Option Code</b> A B	Core Extended A* to G
					<b>Components</b> 2, 3 (Core) 2, 3, 4 (Extended)	
<b>MANDARIN CHINESE 0547</b>	1: Listening 2: Reading and Directed Writing 3: Speaking 4: Continuous Writing	35m 1h30m 15m 1h15m	Core 33% - Ext. 25% Core 33% - Ext. 25% Core 33% - Ext. 25% Extended 25%		May not be taken in the same examination session as 0509. <b>Option Code</b> A B	Core Extended A* to G
					<b>Components</b> 1, 2, 3 (Core) 1, 2, 3, 4 (Extended)	
<b>MATHEMATICS CAMBRIDGE INTERNATIONAL 0607</b>	01: Paper 1 (Core) 02: Paper 2 (Extended) 03: Paper 3 (Core) 04: Paper 4 (Extended) 05: Paper 5 (Core) 06: Paper 6 (Extended)	45 m 45m 1h45m 2h15m 1h 1h30m	25% 20% 60% 60% 15% 20%		May not be taken in the same examination session as 0580, 0581, 4024. <b>Option Code</b> A B	Core Extended A* to E
					<b>Components</b> 1, 3, 5 (Core) 2, 4, 6 (Extended)	

KEY TO IGCSE SYLLABUSES (in alphabetical order):

SYLLABUS NAME AND CODE	COMPONENT INFORMATION	DURATION	WEIGHTING	OPTION CODE	NOTES	ACCESS TO GRADES
<b>MATHEMATICS</b> (Without Coursework) 0580	11: Paper 1 (Core)	1h	35%		May not be taken in the same examination session as 0581, 0607 4024.  <b>Components</b> 11, 31 (Core) 21, 41 (Extended)	Core Extended A* to E
	21: Paper 2 (Extended)	1h30m	35%			
	31: Paper 3 (Core)	2h	65%			
	41: Paper 4 (Extended)	2h30m	65%			
				<b>Option Code</b>		
				AX		
				BX		
<b>MATHEMATICS</b> (With Coursework) 0581	11: Paper 1 (Core)	1h	35%		May not be taken in the same examination session as 0580, 0607 4024.  <b>Components</b> 11, 31, 5 (Core) 11, 31, 85 (Core) 21, 41, 6 (Extended) 21, 41, 86 (Extended)	Core Extended A* to E
	21: Paper 2 (Extended)	1h30m	35%			
	31: Paper 3 (Core)	2h	65%			
	41: Paper 4 (Extended)	2h30m	65%			
	5: Coursework (Core)	-	20%			
	6: Coursework (Extended)	-	20%			
	85: Coursework (Core)	-	20%			
	Mark Carried Forward					
	86: Coursework (Extended)	-	20%			
	Mark Carried Forward					
				<b>Option Code</b>		
				AX		
				BX		
				CX		
				DX		
<b>MUSIC</b> 0410	1: Unprepared Listening	1h	24%		Not available to private candidates. A 20 minutes break may be given to candidates between papers 1 & 2.  <b>Components</b> 1, 2, 3, 4 1, 2	All grades A* to G are available
	2: Prepared Listening	40m	16%			
	3: Performing	4 - 10 min	30%			
	4: Composing	-	30%			
				Leave Blank		
				TA		
<b>PAKISTAN STUDIES</b> 0448	1: History and Culture of Pakistan	1h30m	50%		May not be taken in the same examination session as 2059.  <b>Component</b> 1, 2	All grades A* to G are available
	2: Environment of Pakistan	1h30m	50%			
				Leave Blank		

KEY TO IGCSE SYLLABUSES (in alphabetical order):

SYLLABUS NAME AND CODE	COMPONENT INFORMATION	DURATION	WEIGHTING	OPTION CODE	NOTES	ACCESS TO GRADES
<b>PHYSICAL EDUCATION</b> 0413	11: Paper 1 2: Coursework	1h45m	40%		Not available to private candidates.	All grades A* to G are available
		-	60%	Option Code AX		
<b>PHYSICS</b> 0625	11: Multiple Choice 21: Core Theory 31: Extended Theory 4: Coursework 51: Practical 61: Alternative to Practical 84: Coursework Mark Carried Forward	45m	30%		Options AX and EX not available to private candidates. May not be taken in the same examination session as 0652, 0653, 0654, 5054, 5124, 5125, 5129, 5130.	Core Extended A* to G
		1h15m	50%	AX		
		1h15m	50%	BX		
		-	20%	CX		
		1h15m	20%	DX		
		1h	20%	EX		
		-	20%	FX		
				GX		
				HX		
				Option Code Components 11, 31, 4 (Extended) 11, 31, 51 (Extended) 11, 31, 61 (Extended) 11, 31, 84 (Extended) 11, 21, 4 (Core) 11, 21, 51 (Core) 11, 21, 61 (Core) 11, 21, 84 (Core)		
<b>PORTUGUESE</b> 0540	2: Reading and Directed Writing 3: Speaking 4: Continuous Writing	1h30m	35%		May not be taken in the same examination session as 0504.	Core Extended A* to G
		15m	30%	A		
		1h15m	35%	B		
				Option Code Components 2, 3 (Core) 2, 3, 4 (Extended)		
<b>SOCIOLOGY</b> 0495	11: Paper 1 21: Paper 2	2h30m	60%		May not be taken in the same examination session as 2251.	All grades A* to G are available
		1h45m	40%	Option Code AX		

KEY TO IGCSE SYLLABUSES (in alphabetical order):

SYLLABUS NAME AND CODE	COMPONENT INFORMATION	DURATION	WEIGHTING	OPTION CODE	NOTES	ACCESS TO GRADES
<b>SPANISH</b> 0530	11: Listening	c.45m	25%		May not be taken in the same examination session as 0502, 3035.  <b>Components</b> 11, 21, 3 (Core) 11, 21, 3, 41 (Extended) 11, 21, 41, 83 (Extended) 11, 21, 83 (Core)	Core Extended A* to G
	21: Reading and Directed Writing	1h30m	25%			
	3: Speaking	15m	25%			
	41: Continuous Writing	1h15m	25%	<b>Option Code</b>		
	83: Speaking Mark Carried Forward	-	25%	<b>AX</b> <b>BX</b> <b>DX</b> <b>GX</b>		
<b>TRAVEL AND TOURISM</b> 0471	1: Written Paper	2h	60%		May not be taken in the same examination session as 7096.  <b>Components</b> 1, 2 1, 3 1, 83	All grades A* to G are available
	2: Alternative to Coursework	2h30m	40%			
	3: Coursework	-	40%			
	83: Coursework Mark Carried Forward	-	40%	<b>Option Code</b>		
				<b>A</b> <b>B</b> <b>C</b>		
<b>TWENTY FIRST CENTURY SCIENCE</b> 0608	1: Core Multiple Choice	1h	20%		May not be taken in same examination session as 0652, 0653, 0654, 5096, 5124, 5125, 5126, 5129 and 5130.  <b>Components</b> 1, 3, 5, 6 (Core) 2, 4, 5, 6 (Extended) 1, 3, 5, 86 (Core) 2, 4, 5, 86 (Extended)	Core Extended A* to G
	2: Extended Multiple Choice	1h	20%			
	3: Core Written	1h30m	40%			
	4: Extended Written	1h30m	40%			
	5: Comprehension, Practical Procedures, Data Handling and Analysis	1h30m	20%			
	6: Case Study	-	20%	<b>Option Code</b>		
	86: Case Study Mark Carried Forward	-	20%	<b>A</b> <b>B</b> <b>C</b> <b>D</b>		

**INSTRUCTIONS FOR THE SUBMISSION OF ENTRIES FOR THE  
INTERNATIONAL CERTIFICATE OF EDUCATION GROUP AWARD  
JUNE 2010**

### **1. Introduction**

ICE (International Certificate of Education) is the Group Award of the International General Certificate of Secondary Education (IGCSE) and requires the study of subjects drawn from the five different IGCSE subject groups. It gives Centres the opportunity to benefit from offering a broad and balanced curriculum.

### **2. Conditions of Entry**

Centres are required to make a separate entry for ICE for those candidates who fulfil the criteria by virtue of their choice of IGCSE syllabus entries. All the requirements for ICE must normally be satisfied in one examination session. However, in exceptional circumstances, CIE may allow Centres to enter candidates who wish to qualify for ICE over two sessions, provided they are held during a period not exceeding 13 months, i.e., June to November or June to June where the first session is the May/June IGCSE examination.

### **3. Subjects of Examination**

The subjects for the IGCSE and for the ICE are grouped as follows:

#### **Group I: Languages**

First Language Afrikaans, Arabic, Chinese, Czech, Dutch, English, French, German, Japanese, Korean, Portuguese, Russian, Sesotho, Spanish, Thai, Turkish.

Second (or Working) Language Afrikaans, English, Hindi, IsiZulu.

Foreign Language Arabic, Dutch, French, German, Greek, Indonesian, Japanese, Malay, Mandarin Chinese, Portuguese, Spanish.

#### **Group II: Humanities and Social Sciences**

Bangladesh Studies, Development Studies, Economics, Environmental Management, Geography, Global Perspectives, History, Latin, Literature (English), Literature (Spanish), Pakistan Studies, Religious Studies, Sociology.

#### **Group III: Sciences**

Agriculture, Biology, Chemistry, Combined Science, Co-ordinated Sciences (Double Award)\*, Environmental Management, Physical Science, Physics, Twenty First Century Science (Pilot).

\*(Co-ordinated Sciences (Double Award) counts as two subjects for ICE)

#### **Group IV: Mathematics**

Additional Mathematics, Mathematics

#### **Group V: Creative, Technical and Vocational**

Accounting, Art and Design, Business Studies, Child Development, Computer Studies, Design & Technology, Drama, Food & Nutrition, Information & Communication Technology, Music, Physical Education, Travel & Tourism

#### 4. Choice of Subjects

All candidates who enter for ICE must enter and sit for at least seven subjects; these must include two (different) subjects from Group I (Languages) (i.e., for example only one of First Language English and English as a Second Language may count towards an ICE) and one subject from each of Groups II, III, IV and V. The seventh subject can be taken from any of the five subject groups.

With the permission of CIE, subjects taken at an equivalent level in another CIE examination (i.e., GCE Ordinary Level) may be counted towards ICE certification. Such substitution will not be permitted if the proposed substitute subject is available as an IGCSE subject. Each such non-IGCSE subject will be assigned, by CIE, to a subject group and in effect will become an adopted IGCSE subject as far as ICE is concerned. No candidate who has taken fewer than six IGCSE subjects will be awarded an ICE certificate.

Please find below a list of adopted syllabuses available for ICE qualification purposes in 2010.

#### Adopted Non-IGCSE Syllabuses for ICE Qualification Purposes

Group	Subject	Availability	
		June	November
I	3158 Setswana		Y
I	3162 Swahili	Y	
I	3195 Hindi		Y
I	3202 Nepali	Y	
I	3204 Bengali	Y	
I	3205 Sinhala	Y	
I	3206 Tamil	Y	
I	3247 First Language Urdu	Y	
I	3248 Second Language Urdu	Y	Y
II	2048 Religious Studies (Bible Knowledge)	Y	Y
II	2055 Hinduism		Y
II	2056 Islamic Religion and Culture		Y
II	2058 Islamiyat	Y	Y
II	2059 Pakistan Studies		Y
III	5038 Agriculture	Y	
III	5096 Human and Social Biology	Y	Y
III	5125 Science (Biology, Physics)		Y
III	5126 Science (Biology, Chemistry)		Y
IV	4040 Statistics		Y
V	6030 Woodwork		Y
V	6040 Metalwork		Y
V	6050 Fashion and Fabrics		Y
V	7100 Commerce	Y	Y
V	7101 Commercial Studies		Y

#### 5. How to enter for ICE

To enter a candidate for the ICE Award, a Centre must make an entry by means of the ICE entry code in addition to the syllabus and option codes for the examinations being taken by the candidate. Failure to include ICE in the candidate entry will result in only IGCSE results and certificates being issued without the ICE award and certificate.

**IMPORTANT:** The ICE entry code is ICE. If using the excel CIE Final Entry form to submit entries, the code ICE will need to be added to the candidate's entries. See page 13 for an example on how to enter ICE when using the excel CIE Final Entry form. If using Cameo to submit entries, when doing the entries by candidate or by syllabus, the ICE code is located at the end of the list of syllabus available within the session. You will need to highlight 'ICE' and add it to the candidate's entry.

When CIE allows Centres to enter candidates for ICE over two sessions (see 6 below), the previous entry details must also be provided when making the second session syllabus entries.

## 6. Candidates entering ICE over two sessions

In exceptional circumstances, CIE may allow Centres to enter candidates who wish to qualify for ICE at two sittings provided they are held during a period of 13 months, i.e., June to November, June to June, November to June, or November to November. For candidates wishing to qualify for ICE over two sessions, Centres must, when submitting the second session entries, supply the candidate's previous entry details along with making the entry for ICE.

When making the second session IGCSE syllabus entries for a two-session ICE candidate, Centres are not required to make carry-forward mark entries for the candidate's first session syllabus(es). **Although Centres are not required to make carry-forward syllabus entries for two session ICE candidates, the previous entry details (Centre number/candidate number) must be indicated when making their second session syllabus entries in order to include the results achieved in the previous session.**

Syllabus exclusions in force within a single session will also apply to two-session ICE candidates, (i.e., a candidate may not enter for both Chemistry and Combined Science in the same session and, therefore, these syllabuses cannot both count towards ICE over two sessions).

## 7. Retaking syllabuses counting for ICE over two sessions

Centres should note that, whilst it is possible for candidates to retake first session syllabuses in the second session, the retake grade will not count for ICE qualification purposes.

## 8. IGCSEs and ICE Candidates offering Music and Drama over two sessions

There is provision for Centres to offer a small group of IGCSE syllabuses (0410 Music and 0411 Drama) over two sessions instead of a single June session. This arrangement enables Centres to take the written component(s) in June and to submit coursework in the following November (of the same year). Such candidates will still be able to qualify for ICE if they wish to do so, provided certain conditions are met. As usual, the Centre will need to make sure that candidates are being entered for the correct entry option codes and that the accurate previous entry details are also being submitted.

Candidates entering for **ICE over one session:**

- (i) Candidates entering for ICE over one June session will **not** be able to use these IGCSE options towards their ICE award. For them, the full assessment must be completed in the June session to be able to use the syllabus and qualify for the ICE award.
- (ii) Candidates entering for ICE over one November session may use these IGCSE options towards their ICE award by entering the written component(s) in the June session and submitting their coursework in the November session of the same year.

Candidates entering for **ICE over two sessions:**

- (iii) June – June: candidates may **not** use these IGCSE options.
- (iv) June –November: candidates may use these IGCSE options.
- (v) November – June: candidates may **not** use these IGCSE options.
- (vi) November – November: candidates may **not** use these IGCSE options.

For awarding purposes, in cases (ii) and (iv) above, where candidates may use these IGCSE options towards ICE, we will not consider the second session entry of the these syllabuses as a retake (please refer to point 7 above).

## 9. Confirmation of Entry

When you receive your Statement of Entries please check for the following messages. The table below indicates the reasons why these messages may occur and the actions that can consequently be taken:

Statement to be shown on the Statement of Entry	ICE Entry Code Supplied?	Entry Syllabus Grouping Rules Satisfied?	Previous Entry Details Provided?	Action
No Message	No	No	No/Yes	No Action
"Entry criteria for ICE not met in this session. Please check whether previous entry details should have been supplied"	Yes	No	No	Check whether the correct previous entry details have been supplied; if they have, then contact CIE.
"Entry criteria for ICE fully met in this session"	Yes	Yes	No	No Action. The candidate has been entered and qualifies for ICE.
"This candidate has met the entry criteria but has not been entered for the ICE."	No	Yes	No	Centre may enter the candidate for ICE if desired.
"Entry criteria for ICE not met in this and available previous sessions."	Yes	No	Yes	The ICE entry should be withdrawn as the candidate has not satisfied the ICE criteria.
"This candidate has met the entry criteria in this and available previous sessions but has not been entered for the ICE."	No	Yes	Yes	Centre may enter the candidate for ICE if desired.
"Entry criteria for ICE fully met in this and available previous sessions."	Yes	Yes	Yes	No Action. The candidate has been entered and qualifies for ICE.
"Entry criteria for ICE not met because previous sessions results mean that award rules cannot be satisfied by current entry."	Yes	Yes	Yes	The ICE entry should be withdrawn as the candidate has not satisfied the ICE criteria.

## 10. Condition for the Award of the ICE

Successful IGCSE candidates will be placed in one of eight categories: A\*(a\*), A(a), B(b), C(c), D(d), E(e), F(f) or G(g). Grade A(a) is awarded to those candidates showing highest ability in a subject and Grade G(g) for a minimum satisfactory performance. Candidates who perform outstandingly well in a subject are awarded a 'starred A' grade (A\*(a\*)). Performances below the standard of grade G(g) are ungraded and not recorded on the certificates. Grades awarded in subjects are based on the total of the marks gained in the papers, unless additional requirements are specified in the subject Syllabus. To qualify for a grade, candidates must sit all the papers which they are required to offer by the Syllabus. Those who do not sit a paper but for whom a special consideration form is submitted, will be considered for the award of a grade.

In subjects where two levels of assessment are offered, candidates must state the level at which they wish to enter: either core or extended level. The grades available at core level are C(c) to G(g) and at extended level they are A\*(a\*) to E(e) or A\*(a\*) to G(g), depending on the syllabus.

To qualify for ICE, candidates must obtain at least grade G(g) (or E(e) for GCE Ordinary Level subjects) in each of the seven subjects from the subject groups prescribed in Section 4.

Successful ICE candidates will be placed in one of three categories.

**Distinction:** Grade A(a) in five subjects and Grade C(c) or above in two subjects

**Merit:** Grade C(c) or above in five subjects and Grade F(f) or above in two subjects

**Pass:** Grade G(g) or above in seven subjects

Where candidates have taken more than the required seven subjects, the award of Distinction and Merit will be decided on their seven best results (irrespective of subject groups and whether these results are IGCSE or GCE Ordinary level, provided that they have fulfilled the requirements of entering for and sitting at least six IGCSE subjects).

However for the award of Pass, even where candidates have taken more than the required seven subjects, they must achieve at least Grade G(g) in each of the seven subjects from the prescribed subject groups (irrespective of whether these results are IGCSE or GCE Ordinary level, provided that they have fulfilled the requirements of entering for and sitting at least six IGCSE subjects).

Candidates who fail to gain ICE will qualify for the award of the IGCSE grade in the subjects taken. All the requirements for ICE must normally be satisfied at one and the same examination.

## 11. Exclusions

Syllabus exclusions in force within a single session will also apply in those cases where candidates are allowed to enter ICE over two sessions (i.e. a candidate may not enter for both Chemistry and Combined Science in the same session and, therefore, these syllabuses cannot both count towards ICE).

In general, candidates may not offer in any one examination:

- More than one of the alternatives in any subject, except where specified in the Syllabus.
- Any combination of subjects or papers forbidden by the subject Syllabus.
- More than one of subjects with identical titles from IGCSE and GCE Ordinary Level.

The above rules also apply to candidates entering for ICE over two sessions.

## 12. Results and Certificates

Candidates who achieve ICE in one session will receive an ICE Statement of Results, an IGCSE Certificate and a separate ICE Certificate. The IGCSE Certificate will show the grades achieved in individual subjects and the ICE Certificate will show the level of Award obtained only.

Candidates who achieve ICE over two sessions will receive an IGCSE Statement of Results and an IGCSE Certificate for the individual subjects taken at the end of the first session, and an ICE Statement of Results, an IGCSE Certificate for the individual subjects taken and a separate ICE Certificate at the end of the second session. The ICE Certificate will show the level of Award obtained only.

**Note:** Where a candidate has used GCE Ordinary Level subjects for ICE Award purposes, these will be included on the ICE Statement of Results and a separate GCE Certificate will be issued if appropriate.

No candidate who has taken fewer than six IGCSE subjects will be awarded an ICE certificate.

# **GENERAL CERTIFICATE OF EDUCATION ORDINARY LEVEL (GCE O LEVEL)**

O Levels are designed for 14 to 16 year olds and aim to prepare students for academic progression (such as A and AS Level study) and equip them with the skills necessary for employment. They are established qualifications that keep pace with educational developments and trends. International O Levels are recognised throughout the world, by academic institutes and employers, as a mark of quality and evidence of real ability.

The International O Level curriculum places emphasis on broad and balanced study - with subjects drawn from areas covering Languages, Humanities, Social Sciences, Mathematics, Creative, Technical and Vocational. The curriculum is structured so students attain both practical skills and theoretical knowledge.

International O Levels are suitable for virtually all students and to take account of differing abilities there is a choice between Core and Extended curriculum papers in most subjects. They have been specially designed for an international market and are sensitive to the needs of different countries. These qualifications are designed for students whose first language may not be English and this is acknowledged throughout the examination process. The curriculum also allows teaching to be placed in a localised context, making it relevant in varying regions.

## **GCE O Level – Submission of Entries**

The procedures explained on pages 3 to 18 should be followed.

## **GCE O Level Syllabuses in June 2010**

Find below the key to all GCE O Level syllabuses available in June 2010, in alphabetical order.

KEY TO GCE O LEVEL SYLLABUSES (in alphabetical order):

SYLLABUS NAME AND CODE	COMPONENT INFORMATION	DURATION	WEIGHTING	OPTION CODE	NOTES
<b>ADDITIONAL MATHEMATICS</b> 4037	11: Paper 1	2h	50%		May not be taken in the same examination session as 0606.
	21: Paper 2	2h	50%		
				<b>Option Code</b> AX	<b>Components</b> 11, 21
<b>AGRICULTURE</b> 5038	1: Paper 1	2h	77%		May not be taken in the same examination session as 0680
	3: Practical	1h15m	23%		
				<b>Option Code</b> B	<b>Components</b> 1, 3
<b>ART</b> 6010	1: Drawing and/or Painting from Still Life	2h30m	50%		May not be taken in the same examination session as 0400.
	2: Drawing and/or Painting from Observation	2h30m	50%		
	4: Composition in Colour	3h	50%		
	6: Craft B - Design in 2D and 3D	-	50%		
	86: Craft B Mark Carried Forward	-	50%		
				<b>Components</b> 1, 2, 4 2, 4, 86 1, 2, 6 1, 4, 6 2, 4, 6 1, 2, 86 1, 4, 86	
<b>BANGLADESH STUDIES</b> 7094	1: History and Culture of Bangladesh	1h30m	50%		May not be taken in the same examination session as 0449.
	2: Environment and Development of Bangladesh	1h30m	50%		
				<b>Option Code</b> Leave Blank	<b>Components</b> 1, 2
<b>BENGALI</b> 3204	1: Composition	2h	45%		
	2: Language Usage & Comprehension	1h30m	55%		
				<b>Option Code</b> A	<b>Components</b> 1, 2

KEY TO GCE O LEVEL SYLLABUSES (in alphabetical order):

SYLLABUS NAME AND CODE	COMPONENT INFORMATION	DURATION	WEIGHTING	OPTION CODE	NOTES		
<b>BIOLOGY</b> 5090	11: Multiple Choice	1h	25%		May not be taken in the same examination session as 0610, 0653, 0654, 5096, 5125, 5126, 5129, 5130.		
	21: Theory	1h45m	50%				
	31: Practical Test	1h15m	25%				
	61: Alternative to Practical	1h	25%				
				<b>Option Code</b>	<b>Components</b>		
				AX	11, 21, 31		
				BX	11, 21, 61		
<b>BUSINESS STUDIES</b> 7115	11: Short Answer/Structured Response	1h45m	50%		May not be taken in the same examination session as 0450.		
	21: Case Study	1h45m	50%				
						<b>Option Code</b>	<b>Components</b>
						X	11, 21
<b>CHEMISTRY</b> 5070	11: Multiple Choice	1h	27.60%		May not be taken in the same examination session as 0620, 0652, 0653, 0654, 5124, 5126, 5129, 5130.		
	21: Theory	1h30m	51.70%				
	31: Practical Test	1h30m	20.60%				
	41: Alternative to Practical	1h	20.60%				
				<b>Option Code</b>	<b>Components</b>		
				AX	11, 21, 31		
				BX	11, 21, 41		
<b>COMBINED SCIENCE</b> 5129	1: Multiple Choice	1h	28.6%		May not be taken in the same examination session as 0610, 0625, 0652, 0653, 0654, 5054, 5070, 5090, 5096, 5124, 5125, 5126.		
	2: Theory	2h15m	71.4%				
						<b>Option Code</b>	<b>Components</b>
						Leave Blank	1, 2
<b>COMMERCE</b> 7100	11: Multiple Choice	1h	30%		May not be taken in the same examination session as 7101.		
	21: Written	2h	70%				
						<b>Option Code</b>	<b>Components</b>
						X	11, 21

KEY TO GCE O LEVEL SYLLABUSES (in alphabetical order):

SYLLABUS NAME AND CODE	COMPONENT INFORMATION	DURATION	WEIGHTING	OPTION CODE	NOTES
<b>COMPUTER STUDIES</b> 7010	11: Paper 1	2h30m	75%		Not available to private candidates. May not be taken in the same examination session as 0420.
	2: Project	-	25%		
	82: Project Mark Carried Forward	-	25%		
				<b>Option Code</b>	<b>Components</b>
				AX	11, 2
				BX	11, 82
<b>ECONOMICS</b> 2281	11: Multiple Choice	1h	30%		May not be taken in the same examination session as 0455.
	21: Structured Questions	2h	70%		
				<b>Option Code</b>	<b>Components</b>
				X	11, 21
<b>ENGLISH LANGUAGE</b> 1123	11: Composition	1h30m	50%		May not be taken in the same examination session as 0510, 0500, 1115.
	21: Comprehension	1h30m	50%		
				<b>Option Code</b>	<b>Components</b>
				X	11, 21
<b>ENGLISH LANGUAGE (Caribbean)</b> 1115	1: Composition	1h30m	50%		May not be taken in the same examination session as 0510, 0500, 1123, 1220, 1230.
	2: Comprehension	1h30m	50%		
				<b>Option Code</b>	<b>Components</b>
				Leave Blank	1, 2
<b>ENVIRONMENTAL MANAGEMENT</b> 5014	11: Paper 1	2h15m	60%		May not be taken in the same examination session as 0680.
	21: Paper 2	1h30m	40%		
				<b>Option Code</b>	<b>Components</b>
				X	11, 21

KEY TO GCE O LEVEL SYLLABUSES (in alphabetical order):

SYLLABUS NAME AND CODE	COMPONENT INFORMATION	DURATION	WEIGHTING	OPTION CODE	NOTES
<b>FIRST LANGUAGE URDU</b> 3247	1: Reading & Writing 2: Texts	1h30m 1h30m	50% 50%		May not be taken in the same examination session as 3248.
				<b>Option Codes</b> A	
<b>FOOD AND NUTRITION</b> 6065	1: Written 2: Practical	2h 2h30m	50% 50%		May not be taken in the same examination session as 0648. The practical component is preceded by a planning period of 1h30m.
				<b>Option Code</b> A	
<b>FRENCH</b> 3015	1: Translation & Composition 2: Reading Comprehension	1h30m 1h30m	50% 50%		May not be taken in the same examination session as 0520, 0501.
				<b>Option Code</b> A	
<b>GEOGRAPHY</b> 2217	11: Geographical Themes 21: Investigation and Skills	1h45m 2h15m	50% 50%		May not be taken in the same examination session as 0460, 2223.
				<b>Option Code</b> X	
<b>HISTORY</b> (World Affairs, 1917-1991) 2158	1: Paper 1	2h30m	100%		May not be taken in the same examination session as 0470, 2160.
				<b>Option Code</b> Leave Blank	

KEY TO GCE O LEVEL SYLLABUSES (in alphabetical order):

SYLLABUS NAME AND CODE	COMPONENT INFORMATION	DURATION	WEIGHTING	OPTION CODE	NOTES
<b>HISTORY</b> (Caribbean) 2159	1: Paper 1	2h30m	100%		May not be taken in the same examination session as 0470, 2158, 2160.
				<b>Option Code</b> <b>Leave Blank</b>	<b>Components</b> 1 only
<b>HUMAN AND SOCIAL BIOLOGY</b> 5096	11: Multiple Choice 21: Theory	1h 2h	29% 71%		May not be taken in the same examination session as 0610, 5090.
				<b>Option Code</b> <b>X</b>	<b>Components</b> 11, 21
<b>ISLAMIYAT</b> 2058	1: Paper 1 2: Paper 2	1h30m 1h30m	50% 50%		May not be taken in the same examination session as 2056, 8053, 9013.
				<b>Option Code</b> <b>Leave Blank</b>	<b>Components</b> 1, 2
<b>LITERATURE IN ENGLISH</b> 2010	11: Paper 1	2h40m	100%		May not be taken in the same examination session as 0486.
				<b>Option Code</b> <b>X</b>	<b>Components</b> 11 only
<b>MATHEMATICS SYLLABUS D</b> (Calculator) 4024	11: Paper 1 21: Paper 2	2h 2h30m	50% 50%		May not be taken in the same examination session as 0580, 0581.
				<b>Option Code</b> <b>X</b>	<b>Components</b> 11, 21
<b>NEPALI</b> 3202	1: Paper 1	3h	100%		
				<b>Option Code</b> <b>Leave Blank</b>	<b>Components</b> 1 only

KEY TO GCE O LEVEL SYLLABUSES (in alphabetical order):

SYLLABUS NAME AND CODE	COMPONENT INFORMATION	DURATION	WEIGHTING	OPTION CODE	NOTES
PAKISTAN STUDIES 2059	1: History and Culture of Pakistan	1h30m	50%		May not be taken in the same examination session as 0448.
	2: Environment of Pakistan	1h30m	50%	Option Code Leave Blank	
PHYSICS 5054	11: Multiple Choice	1h	27.6%		May not be taken in the same examination session as 0625, 0652, 0653, 0654, 5124, 5125, 5129, 5130.
	21: Theory	1h45m	51.7%		
	31: Practical Test	2h	20.7%		
	41: Alternative to Practical	1h	20.7%		
				Option Code AX BX	Components 11, 21, 31, 11, 21, 41
PRINCIPLES OF ACCOUNTS 7110	11: Paper 1 (Multiple Choice)	1h	33%		May not be taken in the same examination session as 0452, 9706.
	21: Paper 2 (Structured)	2h	67%		
				Option Code X	Components 11, 21
RELIGIOUS STUDIES (BIBLE KNOWLEDGE) 2048	11: Luke & Acts (1-21:15)	1h15m	40%		May not be taken in the same examination session as 0490, 2045.
	21: Short-Answer Questions Luke & Acts (1-21:15) Essay Questions	1h45m	60%		
				Option Code X	Components 11, 21
SECOND LANGUAGE URDU 3248	1: Composition & Translation	2h	50%		May not be taken in the same examination session as 3247.
	2: Language Usage, Summary & Comprehension	1h45m	50%		
				Option Code A	Components 1, 2
SINHALA 3205	1: Composition	1h30m	45%		
	2: Translation & Reading Comprehension	1h30m	55%		
				Option Code A	Components 1, 2

KEY TO GCE O LEVEL SYLLABUSES (in alphabetical order):

SYLLABUS NAME AND CODE	COMPONENT INFORMATION	DURATION	WEIGHTING	OPTION CODE	NOTES	
SOCIOLOGY 2251	11: Paper 1 21: Paper 2	2h30m 1h45m	60% 40%		May not be taken in the same examination session as 0495.	
				Option Code		Components
				X		11, 21
SWAHILI 3162	1: Paper 1	2h30m	100%			
				Option Code	Components	
				Leave Blank	1 only	
TAMIL 3206	1: Composition 2: Translation and Reading Comprehension	1h30m 1h30m	45% 55%			
				Option Code	Components	
				A	1, 2	

# GENERAL CERTIFICATE OF EDUCATION ADVANCED SUBSIDIARY LEVEL AND ADVANCED LEVEL (GCE AS & A LEVEL)

GCE AS and A Levels are one of the most recognised qualifications around the world. They are accepted as proof of academic ability for entry into universities, institutes of higher education and military schools and they are equally important for young people moving into employment. CIE has offered GCE Advanced Level qualifications for over 50 years.

CIE's AS and A Levels are continually monitored, developed and improved so that they are recognised worldwide as a mark of quality and evidence of real ability and understanding. AS and A Levels are known throughout the world as providing a foundation for success.

The Advanced Subsidiary level examination is intended primarily for students who have studied the subjects for a period of one year beyond the Ordinary Level or IGCSE stage. The Advanced Subsidiary level usually entails taking one or more of the A Level papers, and may be taken by students halfway through their A Level course.

The Advanced Level examination is intended primarily for students who have studied the subjects for a period of two years beyond the Ordinary Level, or IGCSE.

## GCE AS & A Level - Staged Assessment

Subject to the requirements of the particular A Level syllabus, an award in an AS Level syllabus may be used towards the award of an A Level in the same subject in a subsequent session within a 13 month period ("staged assessment"). These syllabuses are shown with an asterisk in the syllabus key.

The following routes apply:

Routes	Possible situation	Example of Suitable Entry for 9708 Economics
<b>Route 1</b>	Candidate enters for all A Level papers in a single session.	9708 option code AX Entering for components 11, 21, 31, 41 (full A Level)
<b>Route 2</b>	Candidate enters for A Level who wishes to have the AS Level result achieved in the previous June counted towards the A Level award and is <b>not</b> retaking those components that contributed to the AS again.	9708 option code BX Entering for components 31, 41, 66 (A2 components plus AS carry forward mark from June)
<b>Route 3</b>	Candidate enters for A Level who wishes to have the AS Level result achieved in the previous November counted towards the A Level award and is <b>not</b> retaking those components that contributed to the AS Level again.	9708 option code CX Entering for components 31, 41, 67 (A2 components plus AS carry forward mark from November)
<b>Route 4</b>	Candidate enters for all A Level papers in the same session; wishes to have the result from either or both of a previous June and/or November session considered for the A Level award. CIE will award the best possible grade.	9708 option code DX Entering from components 11, 21, 31, 41, 66, 67 (full A Level plus carry forward marks from June and/or November)

Please note that staged assessments will not be available in Languages other than English, or in certain subjects that do not have an AS Level syllabus.

Centres requiring further information on Staged Assessment should refer to section 2.7 of the CIE Handbook for Centres 2010.

## **GCE AS & A Level – Compensatory AS Level**

Some candidates who have entered for an A Level in a subject will be awarded an AS result rather than an A Level result. This is because their performance, while not meeting the standards of the A Level examination, successfully meets those required for the AS Level.

Candidates who have failed to reach the required standard in the A Level examination, but who would have passed an AS Level examination will receive a Statement of Result which shows the AS performance, graded a(a)-e(e), providing a clear indication of their achievement.

If a candidate already has an AS result for the subject but takes the AS components again in the same session as the other A Level components, a compensatory AS grade will be awarded on the AS components sat that session if the candidate does well enough on the AS components but has not obtained a Grade E(e) or higher at A Level. The compensatory AS grade will be awarded even if the candidate has a previous AS result. However, if a candidate has not re-taken the AS papers but carried forward an AS result, no compensatory AS grade will be awarded as the candidate has already been certificated on those papers.

Please note that Compensatory AS results are not available for all subjects, as not all syllabuses are available at AS Level.

Not all examinations boards adopt this practice; therefore CIE is unique in this respect. This service to candidates is part of CIE's commitment to ensuring accurate and reliable results, which fully recognise the nature of a candidate's achievement.

## **GCE AS & A Level – Retaking GCE AS & A Levels and carry forward options**

Schools or colleges are best placed to give candidates advice with respect to re-takes. If the AS qualification has been achieved with a grade that accurately reflects the candidate's ability, then candidates may, with the help of their school or college, consider whether to carry that AS Level mark forward to their A Level entry; in these circumstances the candidate need not enter for the AS Level papers again. If a school or college believes that a candidate's AS grade could be improved in a subsequent session, then they may advise re-taking all the papers. A Centre may opt to leave the decision open, advising the candidate to re-take all papers but asking CIE via entry option codes to calculate the A Level grade using either the previous AS components or the current AS components.

Subject to the requirements of the particular A Level syllabus, an award in a AS Level syllabus in June 2009 may be used towards the award of an A Level in the same subject in November 2009 and/or June 2010, and an award in an AS Level syllabus in November 2009 may be used towards the award of an A Level in the same subject in June 2010 and/or November 2010.

It is not possible to carry forward an AS Level result to session other than those specified, or to carry forward a result in an individual component unless it constitutes a full AS Level award.

Centres entering candidates for carry forward options should indicate their intentions to CIE by choosing the correct option code. Centres must also remember to include each candidate's previous entry details when submitting their entries.

## **Advanced International Certificate of Education Diploma (AICE Diploma)**

The AICE Diploma provides a high-quality, English-medium qualification which prepares young people for honours degree programmes. It is a 'group' certificate which requires the study of subjects drawn from three curriculum areas. The AICE Diploma offers students the opportunity to tailor their studies to their individual interests, abilities and future plans within an international curriculum framework.

For the procedures on how to enter candidates for the Advanced International Certificate of Education Diploma (AICE Diploma) please refer to page 68 of this booklet.

## **GCE AS & A Level – Submission of Entries**

The procedures explained on pages 3 to 18 should be followed.

## **GCE AS & A Level Syllabuses in June 2010**

Find below the key to all GCE O Level syllabuses available in June 2010, in alphabetical order.

KEY TO AS & A LEVEL SYLLABUSES (in alphabetical order):

\*INDICATES THAT THE SYLLABUS INCLUDES OPTIONS THAT CAN BE ENTERED AS PART OF A STAGED ASSESSMENT

SYLLABUS NAME AND CODE	COMPONENT INFORMATION	DURATION	WEIGHTING		OPTION CODE	NOTES
			A LEVEL	AS LEVEL		
<b>ACCOUNTING*</b> 9706	11: Multiple Choice (Core)	1h	15%	30%		May not be taken in the same examination session as 7110.
	21: Structured Questions (Core)	1h30m	35%	70%		
	31: Multiple Choice (Supplement)	1h	15%	-		
	41: Problem Solving (Supplement)	2h	35%	-	<b>Option Code</b>	
	66: June AS Mark Carried Forward	-	50%	-	<b>AX</b>	
	67: November AS Mark Carried Forward	-	50%	-	<b>BX</b>	
					<b>CX</b>	
				<b>DX</b>		
				<b>SX</b>	<b>Components</b> 11, 21, 31, 41 31, 41, 66 31, 41, 67 11, 21, 31, 41, 66, 67 11, 21 (AS Level only)	
<b>AICE DIPLOMA</b> <b>RESEARCH PROJECT</b> 8660	1: Research Project 1	-	-	50%		
	2: Research Project 2	-	-	50%		
					<b>Option Code</b>	<b>Components</b>
					<b>Leave Blank</b>	1, 2
<b>APPLIED INFORMATION &amp; COMMUNICATION TECHNOLOGY*</b> 9713	11: Written A	1h15m	20%	40%		May not be taken in the same examination session as 9691.
	2: Practical Test A	2h30m	30%	60%		
	31: Written B	1h15m	20%	-		
	4: Practical Test B	2h30m	30%	-	<b>Option Code</b>	
	66: June AS Mark Carried Forward	-	50%	-	<b>AX</b>	
	67: November AS Mark Carried Forward	-	50%	-	<b>BX</b>	
					<b>CX</b>	
				<b>DX</b>		
				<b>SX</b>	<b>Components</b> 11, 2, 31, 4 31, 4, 66 31, 4, 67 11, 2, 31, 4, 66, 67 11, 2 (AS Level only)	
<b>ART AND DESIGN*</b> 9704	1: Controlled Test	15hrs	30%	60%		Not available to private candidates
	2: Coursework A	-	20%	40%		
	3: Coursework B	-	30%	-	<b>Option Code</b>	
	4: Related Study	-	20%	-	<b>A</b>	
	62: June or November Paper 2 Mark Carried Forward	-	20%	40%	<b>B</b>	
	64: June or November Paper 4 Mark Carried Forward	-	20%	-	<b>C</b>	
	66: June Marks Carried Forward	-	50%	-	<b>D</b>	
	67: November Marks Carried Forward	-	50%	-	<b>E</b>	
	83: June Paper 3 Mark Carried Forward	-	30%	-	<b>F</b>	
	93: November Paper 3 Mark Carried Forward	-	30%	-	<b>G</b>	
					<b>H</b>	
				<b>S</b>		
				<b>SA</b>	<b>Components</b> 1, 2, 3, 4 3, 4, 66 3, 4, 67 1, 2, 3, 4, 66, 67 1, 3, 4, 62 1, 2, 3, 64 1, 2, 4, 83 1, 2, 4, 93 1, 2 (AS Level only) 1, 62 (AS Level only)	

KEY TO AS & A LEVEL SYLLABUSES (in alphabetical order):

\*INDICATES THAT THE SYLLABUS INCLUDES OPTIONS THAT CAN BE ENTERED AS PART OF A STAGED ASSESSMENT

SYLLABUS NAME AND CODE	COMPONENT INFORMATION	DURATION		WEIGHTING		OPTION CODE	NOTES	
		A LEVEL	AS LEVEL	A LEVEL	AS LEVEL			
<b>BIOLOGY*</b> 9700	11: Multiple Choice	1h	15%	31%				
	21: AS Structured Questions	1h15m	23%	46%				
	31: Advanced Practical Skills 1	2h	12%	23%				
	32: Advanced Practical Skills 2	2h	12%	23%				
	41: A2 Structured Questions	2h	38%	-				
	51: Planning, Analysis and Evaluation	1h15m	12%	-				
	66: June AS Mark Carried Forward	-	50%	-				
	67: November AS Mark Carried Forward	-	50%	-				
								<b>Option Codes</b>
								<b>Components</b> 11, 21, 31, 41, 51 41, 51, 66 41, 51, 67 11, 21, 31, 41, 51, 66, 67 11, 21, 32, 41, 51 11, 21, 32, 41, 51, 66, 67 11, 21, 31 ( <b>AS Level only</b> ) 11, 21, 32 ( <b>AS Level only</b> )
<b>BUSINESS STUDIES*</b> 9707	11: Short Answer/Essay	1h15m	20%	40%				
	21: Data Response	1h30m	30%	60%				
	31: Case Study	3h	50%	-				
	66: June AS Mark Carried Forward	-	50%	-				
	67: November AS Mark Carried Forward	-	50%	-				
								<b>Option Code</b>
								<b>Components</b> 11, 21, 31 31, 66 31, 67 11, 21, 31, 66, 67 11, 21 ( <b>AS Level only</b> )
<b>CHEMISTRY*</b> 9701	11: Multiple Choice	1h	15%	31%				
	21: AS Structured Questions	1h15m	23%	46%				
	31: Advanced Practical Skills	2h	12%	23%				
	41: A2 Structured Questions	1h45m	38%	-				
	51: Planning, Analysis and Evaluation	1h15m	12%	-				
	66: June AS Mark Carried Forward	-	50%	-				
	67: November AS Mark Carried Forward	-	50%	-				
								<b>Option Code</b>
							<b>Components</b> 11, 21, 31, 41, 51 41, 51, 66 41, 51, 67 11, 21, 31, 41, 51, 66, 67 11, 21, 31 ( <b>AS Level only</b> )	
<b>COMPUTING*</b> 9691  (continued)	11: Written Paper 1	2h30m	37.5%	75%				
	2: Practical Programming Project	-	12.5%	25%				
	31: Written Paper 3	2h	30%	-				
	4: Project 2	-	20%	-				
	66: June AS Mark Carried Forward	-	50%	-				
	67: November AS Mark Carried Forward	-	50%	-				
	82: June Paper 2 Mark Carried Forward	-	12.5%	25%				
								<b>Option Code</b>
							<b>Components</b> 11, 2, 31, 4 31, 4, 66 31, 4, 67	

KEY TO AS & A LEVEL SYLLABUSES (in alphabetical order):

\*INDICATES THAT THE SYLLABUS INCLUDES OPTIONS THAT CAN BE ENTERED AS PART OF A STAGED ASSESSMENT

SYLLABUS NAME AND CODE	COMPONENT INFORMATION	DURATION	WEIGHTING		OPTION CODE	NOTES
			A LEVEL	AS LEVEL		
<b>COMPUTING*</b> 9691 (continued)	84: June Paper 4 Mark Carried Forward	-	20%	-		
	92: November Paper 2 Mark Carried Forward	-	12.5%	25%	Option Code	Components
	94: November Paper 4 Mark Carried Forward	-	20%	-	DX	11, 2, 31, 4, 66, 67
					EX	11, 2, 31, 84
					FX	11, 2, 31, 94
					GX	11, 31, 4, 82
					HX	11, 31, 4, 92
					IX	11, 31, 82, 84
					JX	11, 31, 82, 94
					KX	11, 31, 84, 92
				LX	11, 31, 92, 94	
				S1	11, 2 (AS Level only)	
				S2	11, 82 (AS Level only)	
				S3	11, 92 (AS Level only)	

<b>ECONOMICS*</b> 9708	11: Multiple Choice (Core)	1h	20%	40%		
	21: Data Response & Essay (Core)	1h30m	30%	60%		
	31: Multiple Choice (Supplement)	1h	15%	-	Option Code	Components
	41: Data Response & Essays (Supplement)	2h15m	35%	-	AX	11, 21, 31, 41
	66: June AS Mark Carried Forward	-	50%	-	BX	31, 41, 66
	67: November AS Mark Carried Forward	-	50%	-	CX	31, 41, 67
					DX	11, 21, 31, 41, 66, 67
				SX	11, 21 (AS Level only)	

<b>ENGLISH LANGUAGE</b> 8693	11: Passages for Comment	2h	-	50%		AS Level only
	21: Composition	2h	-	50%		May not be taken in the same examination session as 0397, 8695.
					Option Code	Components
				AX	11, 21	

KEY TO AS & A LEVEL SYLLABUSES (in alphabetical order):

\*INDICATES THAT THE SYLLABUS INCLUDES OPTIONS THAT CAN BE ENTERED AS PART OF A STAGED ASSESSMENT

SYLLABUS NAME AND CODE	COMPONENT INFORMATION	DURATION	WEIGHTING		OPTION CODE	NOTES
			A LEVEL	AS LEVEL		
<b>ENVIRONMENTAL MANAGEMENT</b> 8291	11: Paper 1	1h30m	-	40%		<b>AS Level only</b> Not available to private candidates.
	21: Paper 2	1h30m	-	40%		
	3: School Based Assessment	-	-	20%		<b>Components</b> 11, 21, 3 11, 21, 83
	83: Coursework Mark Carried Forward	-	-	20%	<b>Option Code</b> AX BX	
<b>FIRST LANGUAGE SPANISH</b> 8665	21: Reading & Writing	1h45m	-	50%		<b>AS Level only</b> May not be taken in the same examination session as 8673, 8685, 9719.
	41: Texts	2h30m	-	50%	<b>Option Code</b> X	
<b>FRENCH</b> 9716	1: Speaking	20m	20%	-		<b>A Level only</b> May not be taken in the same examination session as 8670, 8682.
	21: Reading & Writing	1h45m	35%	-		
	31: Essay	1h30m	15%	-		
	41: Texts	2h30m	30%	-	<b>Option Code</b> AX	
<b>FRENCH LANGUAGE</b> 8682	1: Speaking	20m	-	30%		<b>AS Level only</b> May not be taken in the same examination session as 9716.
	21: Reading & Writing	1h45m	-	50%		
	31: Essay	1h30m	-	20%	<b>Option Code</b> X	
<b>FRENCH LITERATURE</b> 8670	4: Texts	2h30m	-	100%		<b>AS Level only</b> May not be taken in the same examination session as 9716.
					<b>Option Code</b> Leave Blank	

KEY TO AS & A LEVEL SYLLABUSES (in alphabetical order):

\*INDICATES THAT THE SYLLABUS INCLUDES OPTIONS THAT CAN BE ENTERED AS PART OF A STAGED ASSESSMENT

SYLLABUS NAME AND CODE	COMPONENT INFORMATION	DURATION	WEIGHTING		OPTION CODE	NOTES
			A LEVEL	AS LEVEL		
<b>FURTHER MATHEMATICS</b> 9231	11: Paper 1	3h	50%	-		A Level only
	21: Paper 2	3h	50%	-	Option Code AX	Components 11, 21
<b>GENERAL PAPER</b> 8004	11: Paper 1	2h	-	100%		AS Level only
					Option Code X	Components 11 only
<b>GEOGRAPHY*</b> 9696	11: Core Geography	3h	50%	100%		Papers 2 and 3 are taken in the same session.
	21: Physical Geography	1h30m	25%	-		
	31: Human Options	1h30m	25%	-		
	66: June AS Core Mark Carried Forward	-	50%	-	Option Code	Components
	67: November AS Core Mark Carried Forward	-	50%	-	AX	11, 21, 31
					BX	21, 31, 66
				CX	21, 31, 67	
				DX	11, 21, 31, 66, 67	
				SX	11 only (AS Level only)	
<b>HISTORY*</b> 9697	11: Paper 1	3h	50%	100%		AS Level candidates must study one area and period of History while A Level candidates must study two different areas and different areas and periods of History.
	31: Paper 3	3h	50%	100%		
	51: Paper 5	3h	50%	100%		
	6: Paper 6	3h	50%	100%		
	61: June Paper 1 AS Mark Carried Forward	-	50%	-		
	63: June Paper 3 AS Mark Carried Forward	-	50%	-		
	65: June Paper 5 AS Mark Carried Forward	-	50%	-		
	66: June Paper 6 AS Mark Carried Forward	-	50%	-		
	71: November Paper 1 AS Mark Carried Forward	-	50%	-	Option Code	Components
					BX	11, 31
					DX	11, 51
				EX	11, 6	
				JX	31, 51	
				KX	31, 6	
				MX	51, 6	
				NX	11, 63, 65, 66	
				OX	11, 72, 73, 74, 75	

(continued)

KEY TO AS & A LEVEL SYLLABUSES (in alphabetical order):

\*INDICATES THAT THE SYLLABUS INCLUDES OPTIONS THAT CAN BE ENTERED AS PART OF A STAGED ASSESSMENT

SYLLABUS NAME AND CODE	COMPONENT INFORMATION	DURATION	WEIGHTING		OPTION CODE	NOTES
			A LEVEL	AS LEVEL		
<b>HISTORY*</b> 9697 (continued)	74: November Paper 4 AS Mark Carried Forward	-	50%	-	Option Code	<b>Components</b>
	75: November Paper 5 AS Mark Carried Forward	-	50%	-	RX	31, 61, 65, 66
					SX	31, 71, 72, 74, 75
					SA	11 only ( <b>AS Level only</b> )
					SC	31 only ( <b>AS Level only</b> )
					SE	51 only ( <b>AS Level only</b> )
					SF	6 only ( <b>AS Level only</b> )
					VX	51, 61, 63, 66
					WX	51, 71, 72, 73, 74
					XW	6, 61, 63, 65
					YW	6, 71, 72, 73, 74, 75
					XB	11, 31, 61, 63, 71, 73
					XD	11, 51, 61, 65, 71, 75
				XE	11, 6, 61, 66, 71	
				XJ	31, 51, 63, 65, 73, 75	
				XK	31, 6, 63, 66, 73	
				XM	51, 6, 65, 66, 75	

<b>LANGUAGE AND LITERATURE IN ENGLISH</b> 8695	21: Composition	2h	-	50%		<b>AS Level only</b>
	91: Poetry, Prose, Drama	2h	-	50%		May not be taken in the same examination session as 0396, 0397, 8693, 9695.
					Option Code	<b>Components</b>
					AX	21, 91

<b>LAW*</b> 9084	11: Paper 1	1h30m	30%	60%		
	21: Paper 2	1h30m	20%	40%		
	31: Paper 3	1h30m	25%	-	Option Code	<b>Components</b>
	41: Paper 4	1h30m	25%	-	AX	11, 21, 31, 41
	66: June Mark Carried Forward	-	50%	-	BX	31, 41, 66
	67: November Mark Carried Forward	-	50%	-	CX	31, 41, 67
					DX	11, 21, 31, 41, 66, 67
				SX	11, 21 ( <b>AS Level only</b> )	

KEY TO AS & A LEVEL SYLLABUSES (in alphabetical order):

\*INDICATES THAT THE SYLLABUS INCLUDES OPTIONS THAT CAN BE ENTERED AS PART OF A STAGED ASSESSMENT

SYLLABUS NAME AND CODE	COMPONENT INFORMATION	DURATION		WEIGHTING		OPTION CODE	NOTES	
		A LEVEL	AS LEVEL	A LEVEL	AS LEVEL			
<b>LITERATURE IN ENGLISH*</b> 9695	31: Poetry & Prose	2h	25%	50%			May not be taken in the same examination session as 8695. Component 8 is available only to Centres which have registered in advanced by submitting a full coursework proposal to CIE in writing by December in the first year of the course.	
	41: Drama	2h	25%	50%				
	51: Shakespeare & Other Pre-20th Century Texts	2h	25%	-				
	61: 20th Century Texts	2h	25%	-				
	71: Comment & Appreciation	2h	25%	-				
	8: Coursework	-	25%	-				
	66: June AS Mark Carried Forward	-	50%	-				
	67: November AS Mark Carried Forward	-	50%	-				
	88: Paper 8 Mark Carried Forward	-	25%	-				
								<b>Option Code</b>
								<b>Components</b>
								AX 31, 41, 51, 61
								BX 31, 41, 51, 71
						CX 31, 41, 51, 8		
						DX 51, 61, 66		
						EX 51, 71, 66		
						FX 51, 8, 66		
						GX 51, 61, 67		
						HX 51, 71, 67		
						IX 51, 8, 67		
						JX 31, 41, 51, 61, 66, 67		
						KX 31, 41, 51, 71, 66, 67		
						LX 31, 41, 51, 8, 66, 67		
						MX 31, 45, 51, 88		
						NX 31, 41, 61, 88		
						OX 31, 41, 71, 88		
						SX 31, 41 (AS Level only)		
<b>MARINE SCIENCE*</b> 9693	1: AS Structured Questions	1h30m	30%	60%			<b>Option Code</b> A 1, 2, 3, 4 B 3, 4, 66 D 1, 2, 3, 4, 66 S 1, 2 (AS Level only)	
	2: AS Data-Handling and Free-Response	1h15m	20%	40%				
	3: A2 Structured Questions	1h30m	30%	-				
	4: A2 Data-Handling and Free-Response	1h15m	20%	-				
	66: June AS Mark Carried Forward	-	50%	-				
								<b>Components</b>



KEY TO AS & A LEVEL SYLLABUSES (in alphabetical order):

\*INDICATES THAT THE SYLLABUS INCLUDES OPTIONS THAT CAN BE ENTERED AS PART OF A STAGED ASSESSMENT

SYLLABUS NAME AND CODE	COMPONENT INFORMATION	DURATION	WEIGHTING		OPTION CODE	NOTES	
			A LEVEL	AS LEVEL			
<b>MUSIC*</b> 9703	1: Listening	2h	25%	50%		May not be taken in the same examination session as 8663.	
	2: Practical Musicianship	-	25%	50%			
	3: Performing	-	25%	-			
	4: Composing	-	25%	-			
	5: Investigation and Report	-	25%	-			
	66: June AS Mark Carried Forward	-	50%	-			
	<b>Option Code</b>						<b>Components</b>
	<b>A</b>						1, 2, 3, 4
	<b>B</b>						1, 2, 3, 5
	<b>C</b>						1, 2, 4, 5
<b>D</b>					3, 4, 66		
<b>E</b>					3, 5, 66		
<b>F</b>					4, 5, 66		
<b>G</b>					1, 2, 3, 4, 66		
<b>H</b>					1, 2, 3, 5, 66		
<b>I</b>					1, 2, 4, 5, 66		
<b>S</b>					1, 2 (AS Level only)		
<b>PHYSICS*</b> 9702	11: Multiple Choice	1h	15%	31%		May not be taken in the same examination session as 8663.	
	21: AS Structured Questions	1h	23%	46%			
	31: Advanced Practical Skills 1	2h	12%	23%			
	32: Advanced Practical Skills 2	2h	12%	23%			
	41: A2 Structured Questions	1h45m	38%	-			
	51: Planning, Analysis and Evaluation	1h15m	12%	-			
	66: June AS Mark Carried Forward	-	50%	-			
	67: November AS Mark Carried Forward	-	50%	-			
	<b>Option Code</b>						<b>Components</b>
	<b>AX</b>						11, 21, 31, 41, 51
<b>BX</b>					41, 51, 66		
<b>CX</b>					41, 51, 67		
<b>DX</b>					11, 21, 31, 41, 51, 66, 67		
<b>EX</b>					11, 21, 32, 41, 51		
<b>FX</b>					11, 21, 32, 41, 51, 66, 67		
<b>S1</b>					11, 21, 31 (AS Level only)		
<b>S2</b>					11, 21, 32 (AS Level only)		
<b>PORTUGUESE</b> 9718	1: Speaking	20m	20%	-		A Level only May not be taken in the same examination session as 8684, 8672.	
	2: Reading & Writing	1h45m	35%	-			
	3: Essay	1h30m	15%	-			
	4: Texts	2h30m	30%	-			
	<b>Option Code</b>						<b>Components</b>
<b>Leave Blank</b>					1, 2, 3, 4		

KEY TO AS & A LEVEL SYLLABUSES (in alphabetical order):

\*INDICATES THAT THE SYLLABUS INCLUDES OPTIONS THAT CAN BE ENTERED AS PART OF A STAGED ASSESSMENT

SYLLABUS NAME AND CODE	COMPONENT INFORMATION	DURATION	WEIGHTING		OPTION CODE	NOTES
			A LEVEL	AS LEVEL		
<b>PORTUGUESE LANGUAGE</b> 8684	1: Speaking	20m	-	30%		<b>AS Level only</b> May not be taken in the same examination session as 9718.
	2: Reading & Writing	1h45m	-	50%		
	3: Essay	1h30m	-	20%		
					<b>Option Code</b>	<b>Components</b>
					<b>Leave Blank</b>	1, 2, 3
<b>PORTUGUESE LITERATURE</b> 8672	4: Texts	2h30m	-	100%		<b>AS Level only</b> May not be taken in the same examination session as 9718.
					<b>Option Code</b>	<b>Components</b>
					<b>Leave Blank</b>	4 only
<b>PSYCHOLOGY*</b> 9698	11: Core Studies 1	1h30m	25%	50%		<b>Components</b> 11, 21, 31 31, 66 31, 67 11, 21, 31, 66, 67 11, 21 ( <b>AS Level only</b> )
	21: Core Studies 2	1h30m	25%	50%		
	31: Specialist Choices	3h	50%	-		
	66: June AS Mark Carried Forward	-	50%	-		
	67: November AS Mark Carried Forward	-	50%	-		
					<b>AX</b>	
					<b>BX</b>	
					<b>CX</b>	
					<b>DX</b>	
					<b>SX</b>	
<b>SOCIOLOGY*</b> 9699	11: Essay	1h30m	25%	50%		<b>Components</b> 11, 21, 31 31, 66 31, 67 11, 21, 31, 66, 67 11, 21 ( <b>AS Level only</b> )
	21: Data Response	1h30m	25%	50%		
	31: Essay 2	3h	50%	-		
	66: June AS Mark Carried Forward	-	50%	-		
	67: November AS Mark Carried Forward	-	50%	-		
					<b>AX</b>	
					<b>BX</b>	
					<b>CX</b>	
					<b>DX</b>	
					<b>SX</b>	
<b>SPANISH</b> 9719	1: Speaking	20m	20%	-		<b>A Level only</b> May not be taken in the same examination session as 8665, 8673, 8685.
	21: Reading & Writing	1h45m	35%	-		
	31: Essay	1h30m	15%	-		
	41: Texts	2h30m	30%	-		
					<b>AX</b>	
					<b>Components</b>	1, 21, 31, 41

KEY TO AS & A LEVEL SYLLABUSES (in alphabetical order):

\*INDICATES THAT THE SYLLABUS INCLUDES OPTIONS THAT CAN BE ENTERED AS PART OF A STAGED ASSESSMENT

SYLLABUS NAME AND CODE	COMPONENT INFORMATION	DURATION	WEIGHTING		OPTION CODE	NOTES
			A LEVEL	AS LEVEL		
<b>SPANISH LANGUAGE</b> 8685	1: Speaking	20m	-	30%		<b>AS Level only</b> May not be taken in the same examination session as 8665, 9719.
	21: Reading & Writing	1h45m	-	50%		
	31: Essay	1h30m	-	20%		
<b>SPANISH LITERATURE</b> 8673	41: Texts	2h30m	-	100%		<b>AS Level only</b> May not be taken in the same examination session as 8665, 9719.
					<b>Option Code</b> X	<b>Components</b> 41 only
<b>THINKING SKILLS*</b> 9694	11: Problem Solving and Critical Thinking, Multiple Choice	1h30m	25%	50%		
	21: Critical Reasoning	1h30m	25%	50%		
	31: Problem Solving and Critical Thinking (Advanced)	1h15m	25%	-		
	41: Applied Reasoning	1h30m	25%	-		
	66: June AS Mark Carried Forward	-	50%	-		
	67: November AS Mark Carried Forward	-	50%	-		
						<b>Option Code</b> AX BX CX DX SX
<b>TRAVEL AND TOURISM*</b> 9395	1: Core Paper	2h30m	35%	70%		
	2: Planning & Managing a Tourism Event	-	15%	30%		
	3: International Business & Leisure Travel Services	1h30m	25%	-		
	4: Specialised Tourism	1h30m	25%	-		
	66: June AS Mark Carried Forward	-	50%	-		
	67: November AS Mark Carried Forward	-	50%	-		
						<b>Option Code</b> A B C D S

KEY TO AS & A LEVEL SYLLABUSES (in alphabetical order):

\*INDICATES THAT THE SYLLABUS INCLUDES OPTIONS THAT CAN BE ENTERED AS PART OF A STAGED ASSESSMENT

SYLLABUS NAME AND CODE	COMPONENT INFORMATION	DURATION	WEIGHTING		OPTION CODE	NOTES
			A LEVEL	AS LEVEL		
URDU LANGUAGE 8686	2: Reading & Writing 3: Essay	1h45m 1h30m	-	c.70%		AS Level only May not be taken in the same examination session as 9676.
			-	c.30%		
					Option Code	Components
					SB	2, 3

KEY TO AICE (HC) SYLLABUSES (in alphabetical order):

SYLLABUS NAME AND CODE	COMPONENT INFORMATION	DURATION	WEIGHTING	OPTION CODE	NOTES
ENGLISH LANGUAGE 0396	11: Composition	2h	100%		May not be taken in the same examination session as 8693, 8695.
				Option Code X	
ENGLISH LITERATURE 0397	11: Poetry, Prose, Drama	2h	100%		May not be taken in the same examination session as 8693, 8695, 9695.
				Option Code X	

**INSTRUCTIONS FOR THE SUBMISSION OF ENTRIES FOR THE  
ADVANCED INTERNATIONAL CERTIFICATE OF EDUCATION DIPLOMA  
JUNE 2010**

**1. Introduction**

These instructions apply to entries for the AICE Diploma, a Group Award, in which candidates wishing to enter for it are required to reach certain standards in a group of syllabuses in order to gain an AICE Diploma. The AICE Diploma requires the study of subjects drawn from three curriculum areas. These three broad areas are:

- Mathematics and Science (Group 1);
- Languages (Group 2);
- Arts and Humanities (Group 3)

To obtain an AICE Diploma, candidates will be required:

- To be entered for it,
- To obtain at least six credits, and
- To obtain at least one credit in each of the three curriculum groups.

**2. AICE Diploma Entry Requirements**

To enter a candidate for the AICE Diploma, a Centre must make an entry by means of the ADIP entry code in addition to the syllabus and option codes for the examinations being taken by the candidate. Failure to include ADIP in the candidate entry will result in a GCE certificate being issued rather than the AICE Diploma certificate.

**IMPORTANT:** The AICE Diploma entry code is ADIP. If using the Excel CIE Final Entry form to submit entries, the code ADIP will need to be added to the candidate's entries. See page 13 for an example on how to enter ICE when using the excel CIE Final Entry form. If using Cameo to submit entries, when doing the entries by candidate or by syllabus, the ADIP code is located at the end of the list of syllabus available within the session. You will need to highlight 'ADIP' and add it to the candidate's entry.

Previous Entry Details must be submitted for candidates who require results achieved in previous sessions to be included in the award of the AICE Diploma (see section 5).

**3. Credit system**

The full AICE Diploma will be awarded on the basis of the following points system:

- An A Level will count as a double credit in the AICE programme.
- An AS Level will count as a single credit in the AICE programme.
- AICE half-credit courses in English Languages and English Literature are also available. Note: at entry stage each AICE Half Credit is worth half a credit, i.e., candidates cannot use their AICE Half Credit subject to fulfil the one credit in a group requirement.
- Candidates may also submit Research Projects. A pair of Research Projects will count as an AS Level.

The following combinations are therefore all valid:

A Level (2 credits each)	AS Level (1 credit each)	AICE Half-Credit
3	0	0
2	2	0
2	1	2
1	4	0
1	3	2
0	6	0
0	5	2

However, candidates may not count two or more subjects with identical titles or common question papers from AICE Half Credit, GCE AS & A Level. This means, among other exclusions, that a candidate may not count an AS Level and an A Level in the same subject, unless they are entering for different papers in 9697 History. In all such cases, the best result outcome for the candidate will be applied.

Also note that the maximum number of AICE Half Credit syllabuses that may be counted toward the ADIP is two.

#### 4. The four Groups of Syllabuses

All AICE Half Credit, GCE AS & A Level qualifications can count towards the AICE Diploma.

The four Groups of Syllabuses are the following:

- Group 1: Mathematics and Science
- Group 2: Languages
- Group 3: Arts and Humanities
- Group 4: Research Projects – owing to their nature, research projects do not count towards fulfilling the AICE Diploma curriculum group criteria but do count towards the credits.

<b>Group 1: Mathematics and Science</b>	<b>Group 2: Languages</b>	<b>Group 3: Arts and Humanities</b>	<b>Group 4: Research Projects</b>
Applied Information & Communication Technology Biology Chemistry Computing Design and Technology Environmental Management Further Mathematics Mathematics Marine Science Physics Physical Education Psychology Thinking Skills	English (half-credit) English Language Language and Literature in English First Language Spanish Afrikaans Language Arabic/Arabic Language Chinese/Chinese Language French/French Language German/German Language Hindi/Hindi Language Japanese Language Marathi/Marathi Language Portuguese/Portuguese Language Spanish/Spanish Language Tamil/Tamil Language Telugu/Telugu Language Urdu/Urdu Language	Accounting Art and Design Business Studies Chinese Literature Classical Studies Design and Textiles Divinity Economics English Literature (half-credit) Food Studies French Literature General Paper Geography Hindi Literature History Islamic Studies Language and Literature in English Law Literature in English Music Physical Education Portuguese Literature Psychology Sociology Spanish Literature Thinking Skills Travel and Tourism	AICE Diploma Research Project

## 5. Taking the AICE Diploma over more than one session

Candidates are allowed to accumulate the results to be used over more than one examination session. However:

- Results may not be used if they are more than 13 months old. This means, for example, that candidates for the AICE Diploma in June 2010 may use results gained in June 2009 and/or November 2009 as well as in June 2010, but may not use an earlier session.
- Multi-session candidates must make their ADIP entry (see section 2) in their final session. To enable CIE to track such candidates, Centres are required to state candidates' previous session Centre and candidate numbers. For example, in the second session, Centres will state the candidate's first session details; in any third session the candidate's second session details would be required. If Centres do not provide this information and require a change in the way the AICE Diploma result is calculated after results issue, the Centre will need to apply for a Result Enquiry Service 6.

## 6. Retaking the AICE Diploma

Retake of the AICE Diploma is allowed provided all the results counting towards the retake fall within a 13-month period. The retake of individual subjects is also allowed. In all such cases, the best result outcome for the candidate will be applied.

## 7. Confirmation of Entry

Statements of Entry will indicate whether the syllabus entries have satisfied the AICE Diploma entry criteria. The following messages may be printed:

Statement to be shown on the Statement of Entry	AICE Diploma Entry Code Supplied?	Entry Syllabus Grouping Rules and Credit Rating Rules Satisfied?	Previous Entry Details Provided?
No Message	No	No	No
"Entry criteria for AICE Diploma not met in this session. Please check whether previous entry details should have been supplied."	Yes	No	No
"Entry criteria for AICE Diploma fully met in this session."	Yes	Yes	No
"This candidate has met the entry criteria but has not been entered for the AICE Diploma."	No	Yes	No
No Message	No	No	Yes
"Entry criteria for AICE Diploma not met in this and available previous sessions."	Yes	No	Yes
"This candidate has met the entry criteria in this and available previous sessions but has not been entered for the AICE Diploma."	No	Yes	Yes
"Entry criteria for AICE Diploma fully met in this and available previous sessions."	Yes	Yes	Yes
"Entry criteria for AICE not met because previous sessions results mean that award rules cannot be satisfied by current entry."	Yes	Yes	Yes

## 8. Calculating the award in the AICE Diploma

Candidates who meet the requirements of the AICE Diploma will be awarded a Pass, Merit or Distinction. To determine which, they are allocated points according to the grades they achieve in each counting syllabus as follows:

Grade achieved in subject	Points for Double Credit (A Level) study	Points for Full Credit (AS Level) study	Points for Half-Credit study
A*	140		
A	120	60	30
B	100	50	25
C	80	40	20
D	60	30	15
E	40	20	10

Candidates may take more than the required number of syllabuses, e.g. 3 A Levels plus 1 AS Level, or 4 A Levels. The rule in such cases is that at least one subject must be taken and passed at Grade E(e) or better (at A Level, AS Level or AICE (Half Credit)) from each curriculum group, the best total of 6 credits will then be counted for the AICE Diploma irrespective of curriculum group. Note: **at award stage** candidates can use their AICE Half Credit subject to fulfil the one credit in a group requirement.

The award received by the candidates is then determined as follows:

Candidate's total score	Award (if candidate has at least six credits across the three Groups)
320 or above	AICE Diploma with Distinction
220 to 315	AICE Diploma with Merit
120 to 215	AICE Diploma at Pass Level
Below 120	No AICE Diploma, but certificates to record individual subject results

## 9. Results and Certificates

Candidates who achieve ADIP in one session will receive an ADIP Statement of Results, a GCE Certificate showing the grades achieved in individual subjects (and AICE Half Credit Certificate if applicable) and a separate ADIP Certificate.

As GCE AS & A Level subjects are used to calculate the AICE Diploma, the AICE Diploma results will be issued with the GCE results.

The AICE Diploma Statement of Results layout will show the type of pass, the aggregate total point score, the individual subject points value and an asterisk against the subjects which contributed to the total point score. An aggregate point score will not be reported on the AICE Diploma Statement of Results for candidates who fail the AICE Diploma.

Candidates who fail the AICE Diploma will still receive a GCE Certificate reporting their performance in GCE AS & A Level syllabuses (and an AICE Half Credit certificate where applicable).

Multi-session candidates, at the end of each session, will receive a GCE or AICE Half Credit Statement of Result and Certificate where applicable and will be certificated for the AICE Diploma at the end of the final session.

**INDEX OF CAMBRIDGE INTERNATIONAL PRIMARY ACHIEVEMENT TESTS IN SYLLABUS CODE ORDER**

<b>Code</b>	<b>Syllabus</b>	<b>Page</b>
0841	English	20
0842	Mathematics	20
0843	Science	20

**INDEX OF CHECKPOINT SYLLABUSES IN SYLLABUS CODE ORDER**

<b>Code</b>	<b>Syllabus</b>	<b>Page</b>
1111	English	22
1112	Mathematics	22
1113	Science	22

**INDEX OF IGCSE SYLLABUSES IN SYLLABUS CODE ORDER**

<b>Code</b>	<b>Syllabus</b>	<b>Page</b>
0400	Art and Design	25
0410	Music	37
0411	Drama	29
0413	Physical Education	38
0417	Information and Communication Technology	35
0420	Computer Studies	28
0445	Design and Technology	29
0448	Pakistan Studies	37
0449	Bangladesh Studies	26
0450	Business Studies	26
0452	Accounting	25
0455	Economics	29
0457	Global Perspectives	34
0460	Geography	34
0470	History	25
0471	Travel and Tourism	39
0480	Latin	35
0486	Literature (English)	36
0488	Literature (Spanish)	36
0495	Sociology	38
0500	First Language English	31
0501	First Language French	32
0502	First Language Spanish	33
0503	First Language Dutch	31
0504	First Language Portuguese	32
0505	First Language German	32
0507	First Language Japanese	32
0508	First Language Arabic	30
0509	First Language Chinese	30
0510	English as a Second Language	30
0513	First Language Turkish	33
0514	First Language Czech	31
0515	Dutch	29
0516	First Language Russian	32
0518	First Language Thai	33
0520	French	34
0521	First Language Korean	32
0525	German	34
0530	Spanish	39

0540	Portuguese	38
0543	Greek	35
0544	Arabic	25
0546	Malay	36
0547	Chinese	36
0549	Hindi as a Second Language	35
0580	Mathematics (Without Coursework)	37
0581	Mathematics (With Coursework)	37
0606	Additional Mathematics	25
0607	Cambridge International Mathematics	36
0608	Twenty First Century Science	39
0610	Biology	26
0620	Chemistry	27
0625	Physics	38
0637	Child Development	27
0648	Food and Nutrition	33
0653	Combined Science	27
0654	Co-ordinated Sciences (Double Award)	28
0680	Environmental Management	30

#### INDEX OF GCE O LEVEL SYLLABUSES IN SYLLABUS CODE ORDER

Code	Syllabus	Page
1115	English Language (Caribbean)	48
1123	English Language	48
2010	Literature in English	50
2048	Religious Studies (Bible Knowledge)	51
2058	Islamiyat	50
2059	Pakistan Studies	51
2158	History (World Affairs, 1917-1991)	49
2159	History (Caribbean)	50
2217	Geography	49
2251	Sociology	52
2281	Economics	48
3015	French	49
3162	Swahili	52
3202	Nepali	50
3204	Bengali	46
3205	Sinhala	51
3206	Tamil	56
3247	First Language Urdu	49
3248	Second Language Urdu	51
4024	Mathematics (Syllabus D)	50
4037	Additional Mathematics	46
5014	Environmental Management	48
5038	Agriculture	46
5054	Physics	51
5070	Chemistry	47
5090	Biology	47
5096	Human and Social Biology	50
5129	Combined Science	47
6010	Art	46
6065	Food and Nutrition	49
7010	Computer Studies	48
7094	Bangladesh Studies	46
7100	Commerce	47
7110	Principles of Accounts	51
7115	Business Studies	47

**INDEX OF GCE AS & A LEVEL SYLLABUSES IN SYLLABUS CODE ORDER**

<b>Code</b>	<b>Syllabus</b>	<b>Page</b>
8004	General Paper	59
8291	Environmental Management	58
8660	AICE Diploma Research Project	55
8663	Music	62
8665	First Language Spanish	58
8670	French Literature	58
8672	Portuguese Literature	64
8673	Spanish Literature	65
8682	French Language	58
8684	Portuguese Language	64
8685	Spanish Language	65
8686	Urdu Language	66
8693	English Language	57
8695	Language and Literature in English	60
9084	Law	60
9231	Further Mathematics	59
9395	Travel and Tourism	65
9691	Computing	56
9693	Marine Science	61
9694	Thinking Skills	65
9695	Literature in English	61
9696	Geography	59
9697	History	59
9698	Psychology	64
9699	Sociology	64
9700	Biology	56
9701	Chemistry	56
9702	Physics	63
9703	Music	63
9704	Art and Design	55
9706	Accounting	55
9707	Business Studies	56
9708	Economics	57
9709	Mathematics	62
9713	Applied Information & Communication Technology	55
9716	French	58
9718	Portuguese	63
9719	Spanish	64

**INDEX OF AICE (HC) SYLLABUSES IN SYLLABUS CODE ORDER**

<b>Code</b>	<b>Syllabus</b>	<b>Page</b>
0396	English Language	67
0397	English Literature	67