

Procedures for the Submission of Entries Including Key to Syllabuses and Option Details

**General Qualifications
(IGCSE, GCE O Level, AS & A Level, Pre-U GPR,
AICE (HC))
November 2011**

**Checkpoint
October 2011**

**Cambridge International Primary Programme
November 2011**

INT./E.3 Zone 2 (General Qualifications)



Advice on the submission of entries can be obtained from University of Cambridge International Examinations Customer Services on: **+44 1223 553554**

All correspondence relating to the submission of entries, including entry forms, should be addressed to:
University of Cambridge International Examinations, 1 Hills Road, Cambridge, CB1 2EU, United Kingdom

Facsimile: **+44 1223 553558**
E-mail address: **international@cie.org.uk**

Please quote your Centre Number in all communications.

IT SHOULD BE NOTED THAT ALL PREVIOUS COPIES OF THE ENTRY INSTRUCTION BOOKLET INT./E.3 FOR THE OCTOBER AND NOVEMBER EXAMINATION SERIES SHOULD BE DESTROYED.

CONTENTS

| | Page |
|--------------------------------------------------------------------------------------------------------------------|--------|
| Instructions for the submission of entries for General Qualification Examinations - October/November 2011 | 03 |
| • Introduction..... | 03 |
| • Syllabus Information..... | 03 |
| • Methods of Entry | 03 |
| • Final Date for Receipt of Entries | 03 |
| • Private Candidates..... | 04 |
| • Coursework | 04 |
| • Preparation of Entry Information using CIE Direct | 04 |
| • Preparation of Entry Information using Direct Desktop..... | 09 |
| • Preparation of Electronic Entry files using CAMEO | 13 |
| • Preparation of Electronic Entry files using the Final Entry Form | 20 |
| • Uploading your entry file to CIE Direct..... | 21 |
| • Candidate Numbering | 22 |
| • Previous Entry Details..... | 22 |
| • Retake Entries..... | 22 |
| • Carrying Forward of Marks for IGCSE and GCE O Level..... | 22 |
| • Entry Exclusions..... | 23 |
| • Viewing Entries Online | 23 |
| • Documents you will receive as a result of making Entries..... | 23 |
| • Example of an Entry Form Filled in Correctly | 24 |
| • Examples of documentation relating to entries | 25 |
| Entering for an Examination, A Notice to Candidates | 29 |
| Cambridge International Primary Programme | 30 |
| • Key to Cambridge International Primary Achievement Tests in alphabetical order.... | 31 |
| Checkpoint..... | 32 |
| • Submission of Teaching Group Titles | 32 |
| • Key to Checkpoint syllabuses in alphabetical order..... | 33 |
| International Certificate of Secondary Education (IGCSE)..... | 34 |
| • General Coursework | 34 |
| • International Certificate of Education (ICE)..... | 34 |
| • Key of IGCSE syllabuses in alphabetical order | 35 |
| • Instructions for the submission of entries for the ICE Group Award | 50 |
| General Certificate of Education Ordinary Level (GCE O Level) | 55 |
| • Key of GCE O Level syllabuses in alphabetical order | 56 |
| General Certificate of Education Advanced Subsidiary and Advanced Level (GCE AS & A Level) | 66 |
| • Staged Assessment | 66 |
| • Compensatory AS Level | 67 |
| • Retaking GCE AS & A Levels and carry forward options | 67 |
| • Advanced International Certificate of Education Diploma (AICE Diploma)..... | 67 |
| • Key of GCE AS & A syllabuses in alphabetical order | 68 |
| • Key to AICE (Half-Credit) syllabuses | 87 |
| Cambridge International Level 3 Pre-U Certificate (Pre-U GPR) | 88 |
| • Key of Cambridge Pre-U GPR syllabuses in alphabetical order..... | 89 |

| | |
|--------------------------------------------------------------------------------------------------|----|
| Instructions for the submission of entries for the AICE Group Award | 90 |
| Index of Cambridge International Primary Achievement tests in syllabus code order | 94 |
| Index of Checkpoint syllabuses in syllabus code order | 94 |
| Index of IGCSE syllabuses in syllabus code order..... | 94 |
| Index of GCE Ordinary Level syllabuses in syllabus code order..... | 95 |
| Index of GCE Advanced Subsidiary Level and Advanced Level syllabuses in syllabus code order..... | 96 |
| Index of AICE (HC) syllabuses in syllabus code order | 97 |
| Index of Cambridge Pre-U syllabuses in syllabus code order..... | 97 |

**INSTRUCTIONS FOR THE SUBMISSION OF ENTRIES FOR
GENERAL QUALIFICATION EXAMINATIONS
OCTOBER AND NOVEMBER 2011**

1. Introduction

These instructions apply to entries for General Qualification Examinations to be taken in October and November 2011.

2. Syllabus Information

This instruction booklet contains syllabus information for all University of Cambridge International Examinations General Qualification exams available in October and November 2011. Please note that centres can only submit entries for syllabuses they have been approved to offer. If you intend to submit entries for a subject your centre has not entered previously, please submit an Extension of Eligibility form to Cambridge to ensure that your centre is eligible to offer the required syllabus.

The syllabus keys contained in this booklet give details of syllabus numbers, entry option codes and specific prohibited syllabus combinations. Please note that the component information in this booklet includes component codes that may look different from those listed in the corresponding syllabus. For these cases, the first digit of the component code refers to the paper number in the syllabus and the second digit is for internal administrative purposes.

No candidate may enter more than one syllabus with the same title at IGCSE or GCE Ordinary Level. A candidate is also not permitted to enter for the same syllabus code at two centres in the same examination series.

3. Methods of Entry

Centres may submit entries:

- Using the 'Administer Exams' section of the CIE Direct website or;
- Using the CIE Direct Desktop program or;
- As a CAMEO file transmitted via CIE Direct or;
- Using the (Excel-based) electronic Final Entry Form available from the 'Support Materials' area of CIE Direct.

Whichever method of entry is used, Centres are reminded of the importance of submitting accurate entry data. The materials supplied to Centres after the receipt of entries, including such items as question papers, coursework/internally-assessed mark sheets and attendance registers, are dependent upon those entries, as is the subsequent processing of candidates' marks, grades and certificates.

4. Final Date for the Receipt of Entries

| Examination Series/ Qualification | October | November |
|----------------------------------------------------------------------------------------------|-----------|-----------------------------------------------------------------------------|
| Cambridge International Primary Programme | | 16 August |
| Checkpoint | 16 August | |
| IGCSE GCE O Level GCE AS Level GCE A Level AICE (Half Credit) Cambridge Pre-U | | 16 August for first time entries; 21 September for retake entries. |

Centres should submit their entries as soon as possible. **Entries and amendments received after the above specified dates will be subject to late entry fees.** Following the receipt of entries, Centres will be invoiced for the fees due (please refer to your 'Examination Fees 2011/2012' circular).

No entries or amendments will be accepted after 30 September for the October or November examination series.

5. Private Candidates

University of Cambridge International Examinations are designed primarily for candidates who follow courses of study at schools and colleges that act as registered Centres. It is recognised, however, that there are candidates who may not attend schools or colleges, but who may wish to enter for the examinations. Such individuals are referred to as private candidates, and their status should be shown as Private in the CAMEO file, or by entering the letter **'P'** in the appropriate column on the electronic entry form.

It is the responsibility of the Centre to remit examination fees for any private candidates accepted by the Centre. Candidates may be required by the Centre through which they make their entry to reimburse the examination fee and to pay a further fee to cover the cost of supervision and marking of any internally assessed work by the staff of the Centre. Individuals who have been entered as private candidates are identified separately in summaries of the Centre's results. Statement of Results and Certificates will be sent to the Centre.

6. Coursework

Centres are reminded that an entry may only be made for most IGCSE syllabus options that include Coursework components (school-based assessment) provided Cambridge is satisfied that suitable and reliable moderation can be achieved. Teachers at the Centre must be trained by Cambridge in the appropriate subjects before Centres may undertake this internal assessment.

7. Preparation of Entry Information using CIE Direct

CIE Direct is a key tool for exams officers, and the website has recently been redeveloped making it easier to manage exam entries and carry out other administrative tasks. Under the 'Administer Exams' section of the website you will find an examinations 'Dashboard', which can be used to manage your entry information for the examination series, and to view exam timetable information.

A series of video tutorials are available to assist centres with submitting their entries using CIE Direct. These can be found on the Ask CIE website (<http://ask.cie.org.uk/>) in the category 'Ask CIE' > 'Administration of Exams' > 'Entries' > 'CIE Direct Online Entries' > 'CIE Direct Online Entries Video Tutorials'.

Please note that Centres are not currently able to make entries for Checkpoint examinations using CIE Direct's online entries facility.

- **Adding your candidate details**

Before you can submit your entries you need to add your candidate details and entries information. Select 'Add Candidates' from the main dashboard screen, and you will be brought to the screen shown below. You can choose to enter your candidate data either one candidate at a time using the 'Create New Candidate' option, or import a .csv file containing your candidate details on the 'Add candidates from spreadsheet' screen.

The screenshot shows the CIE Direct website interface. At the top left, it says "CIEDirect" and "The online tool for Cambridge Exams Officers". On the top right, there is the University of Cambridge International Examinations logo and a "Go to other CIE sites:" dropdown menu. Below this, it shows the user is logged in as "Dan Test, Test Centre Zone 5 (Z0500)" with a "My Centre details" link and a "Log out" button. A navigation bar contains links for "Home", "Bulletins", "My Messages - 7", "Administer Exams", "Support Materials", and "Ask CIE". Below the navigation bar, there are sub-links for "Dashboard", "Results", "File Transfers", and "Candidate Results website". The main content area is titled "Session: June 2011" and includes a breadcrumb trail: "You are here: Dashboard > June 2011 > Add Candidates". The primary heading is "Add Candidates to this Session". There are two main options: "Add an individual Candidate" with a "Create new Candidate" button, and "Add multiple Candidates" with an "Add Candidates from Spreadsheet" button. Below the second option, it says "Template and formatting instructions follow". At the bottom, there is a copyright notice: "© University of Cambridge Local Examinations Syndicate 2010. Please read our Terms and Conditions." and the Cambridge Assessment Group logo.

- **Create New Candidate**

Pressing this button will open a form allowing you to manually input the candidate information for a single candidate. Once you have completed entering the details of your candidate, click the 'Save Candidate details' button to add the new candidate to your entries. The fields on this screen are as follows:

- **Candidate Number:**
Enter for each candidate the number which you have allocated. (See **Candidate Numbering** below.) CIE Direct will allocate a candidate number if one is not entered.
- **Name:**
The maximum number of characters including any spaces is 60. The name of the candidate will appear on entries and results documentation as it is entered here. Centres may enter the name of the candidate as NAME SURNAME or SURNAME: NAME. When using a colon to separate the surname from the name, once the entry is processed, Cambridge will reverse the order of the names when printing entries and results documentation; e.g. SMITH: JOHN will be printed as JOHN SMITH.
- **Date of Birth:**
Candidates' dates of birth should be entered in the standard UK date format, which is dd/mm/yy.
- **Gender:**
Select the gender of the candidate, either 'Male' or 'Female'.
- **English First Language?:**
Select whether the candidate speaks English as a First Language.
- **CIE Unique Candidate Identifier:**
This field allows the entry of a candidate UCI number, which should be 12 characters long. This information is not required for General Qualifications.
- **NID:**
This optional field allows the entry of a National Identity Number, which can be up to 20 characters long.
- **Unique Learner Number:**
This field allows the entry of a candidate ULN number, which should be 10 characters long. ULN information is usually only required for UK candidates.
- **Status:**
Indicate whether the candidate is a 'School' or 'Private' entry.
- **Previous Centre Number:**
If the candidate is carrying forward any marks or results from a previous series, enter the centre number where they sat their previous examinations in this box.
- **Previous Candidate Number:**
If the candidate is carrying forward any marks or results from a previous series, enter the candidate number used in their previous examinations in this box. Please note that this information is still required if the candidate is using the same candidate number in the current series.

- **Add Candidates from Spreadsheet**

This screen will allow you to upload a .csv file containing your candidate data to CIE Direct. The required format for this file is shown below:

| Candidate Number | CIE UCI | National ID | ULN | Name | Gender | Date of Birth | Previous Centre Number | Previous Candidate Number | First Language English? | School/Private Indicator |
|------------------|--------------|-------------|------------|------------|--------|---------------|------------------------|---------------------------|-------------------------|--------------------------|
| 0001 | XX123098765X | 001234 | 6789012345 | JOHN SMITH | M | 05/08/1996 | XX123 | 7 | Y | P |

A .csv template file can also be downloaded from CIE Direct. Only the Name, Gender and School/Private Indicator are required – all other fields are optional. However, please note that unused fields in the .csv file cannot be removed. (ie. A 'National ID' column must still be included in the file, even if no candidates have provided a National ID number.)

IMPORTANT: Syllabus information must not be included in the .csv file when this is uploaded into the CIE Direct database – any .csv file containing this information will fail to load. Syllabus entries can only be added on the website after your candidate data has been imported.

- **Adding your syllabus entries**

Once you are ready to add your syllabus entries, go to the 'Prepare Entries' section to add the relevant syllabus information for each candidate. Syllabus entries can either be added individually for a particular candidate, or a group of candidates can be entered for the same syllabus option in a group.

- Entries by Candidate**

If you wish to make the entries for each candidate individually, then use the 'Candidates' tab to display a list of the candidates entered in this series. You can then select the required candidate by clicking their name. On the following page, click the 'Create a New Entry' link, and select the required syllabus and option code from the list provided.

CIEDirect
The online tool for Cambridge Exams Officers

UNIVERSITY of CAMBRIDGE
International Examinations

Go to other CIE sites:

Logged in as: Dan Test, Test Centre Zone 5 (ZO500) [My Centre details](#)

Home | Bulletins | My Messages - 7 | Administer Exams | Support Materials | Ask CIE

Dashboard | Results | File Transfers | Candidate Results website

Session: June 2011 [Back to Dashboard](#)

You are here: [Dashboard](#) > [June 2011](#) > [Prepare Entries](#) > Candidates

1. Prepare Entries >> 2. Check Entries >> 3. Submit Entries

Candidates | Syllabuses

Candidates: 79

Filter:

For selected: Remove from Session Items per page: 10 | 25 | 50 | 100 | 500

Page: 1 | 2 | 3 | 4 | 5 | 6 | 7 | 8 | 9 | 10 | 11 | 12 | 13 | 14 | 15 | 16 |

| <input type="checkbox"/> | Number | Name | Entries | | Uploaded |
|--------------------------|--------|----------------|---------|------------------------------------|----------------|
| <input type="checkbox"/> | 1 | JOHN SMITH | 5 | <input type="button" value="Add"/> | 27/01/11 14:07 |
| <input type="checkbox"/> | 2 | JOHN JOHNSON | 0 | <input type="button" value="Add"/> | 11/02/11 10:58 |
| <input type="checkbox"/> | 4 | ALUCARD PETERS | 5 | <input type="button" value="Add"/> | 27/01/11 14:07 |
| <input type="checkbox"/> | 5 | PERRY TAYLOR | 5 | <input type="button" value="Add"/> | 27/01/11 14:07 |
| <input type="checkbox"/> | 8 | PETER SIMPSON | 5 | <input type="button" value="Add"/> | 27/01/11 14:07 |

Page: 1 | 2 | 3 | 4 | 5 | 6 | 7 | 8 | 9 | 10 | 11 | 12 | 13 | 14 | 15 | 16 |

For selected: Remove from Session Items per page: 10 | 25 | 50 | 100 | 500

[Remove all candidates from this session](#)

- Entries by Syllabus**

If you intend to enter a number of candidates for the same syllabus option(s), it may be quicker to use the 'Syllabus' tab. In this screen, you can choose the syllabus and option that you require and then a list of all the candidates entered in the current series will be shown. To enter candidates for the selected option, simply place a tick beside the name of every candidate that you wish to be entered for that syllabus/option. When you have selected the required candidates, click 'Enter Selected Candidates' to add the required syllabus entry for the selected candidates.

CIEDirect
The online tool for Cambridge Exams Officers

UNIVERSITY of CAMBRIDGE
International Examinations

Go to other CIE sites:

Logged in as: Dan Test, Test Centre Zone 5 (ZO500) [My Centre details](#)

Home | Bulletins | My Messages - 7 | Administer Exams | Support Materials | Ask CIE

Dashboard | Results | File Transfers | Candidate Results website

Session: June 2011 [Back to Dashboard](#)

You are here: [Dashboard](#) > [June 2011](#) > [Prepare Entries](#) > [Syllabuses](#) > IGCSE

1. Prepare Entries >> 2. Check Entries >> 3. Submit Entries

Candidates | Syllabuses

Syllabuses with Entries | IGCSE | ICE | GCE O Level | GCE AS & A Level | AICE(HC) | ADIP

Syllabuses: 62

Filter: All Syllabuses | [Syllabuses with Entries](#)

Items per page: 10 | 25 | 50 | 100 | 500

Page: 1 | 2 | 3 | 4 | 5 | 6 | 7 |

| Code | Syllabus name | |
|------|----------------|--------------------------------------------|
| 0400 | Art and Design | <input type="button" value="Add Entries"/> |
| 0410 | Music | <input type="button" value="Add Entries"/> |
| 0411 | Drama | <input type="button" value="Add Entries"/> |

In the 'Syllabus' section you will see a tab for each of the qualifications your Centre is eligible to offer. You can click on the 'Syllabuses with Entries' tab to see which syllabuses you have made entries for.

CIEDirect
The online tool for Cambridge Exams Officers

UNIVERSITY of CAMBRIDGE
International Examinations

Go to other CIE sites:

Logged in as: Dan Test, Test Centre Zone 5 (ZO500) [My Centre details](#) [Log out](#)

Home | Bulletins | My Messages - 7 | Administer Exams | Support Materials | Ask CIE

Dashboard | Results | File Transfers | Candidate Results website

Session: June 2011 [« Back to Dashboard](#)

You are here: [Dashboard](#) > [June 2011](#) > [Prepare Entries](#) > [Syllabuses](#)

1. Prepare Entries >> 2. Check Entries >> 3. Submit Entries

Candidates | **Syllabuses**

Syllabuses with Entries | IGCSE | ICE | GCE O Level | GCE AS & A Level | AICE(HC) | ADIP

Syllabuses: 5

Items per page: 10 | 25 | 50 | 100 | 500

| Qualification | Code | Syllabus name | |
|------------------|------|----------------------------------------|---------------|
| IGCSE | 0400 | Art and Design | ▼ Add Entries |
| GCE O Level | 2058 | Islamivat | ▼ Add Entries |
| GCE AS & A Level | 8684 | Portuguese Language | ▼ Add Entries |
| ADIP | ADIP | AICE Diploma | ▼ Add Entries |
| ICE | ICE | International Certificate of Education | ▼ Add Entries |

Items per page: 10 | 25 | 50 | 100 | 500

- **Checking your entries**

Once you have added your entry and candidate information you can run a series of reports to check the information has been entered correctly. It is important that you ensure your candidates have checked their entry information carefully before you submit it, in order to avoid being charged late entry fees for changes made to your entry information after the entry deadline. The 'Check Entries' tab will allow you to see the range of reports you can download to help you with this.

CIEDirect
The online tool for Cambridge Exams Officers

UNIVERSITY of CAMBRIDGE
International Examinations

Go to other CIE sites:

Logged in as: Dan Test, Test Centre Zone 5 (ZO500) [My Centre details](#) [Log out](#)

Home | Bulletins | My Messages - 7 | Administer Exams | Support Materials | Ask CIE

Dashboard | Results | File Transfers | Candidate Results website

Session: June 2011 [« Back to Dashboard](#)

You are here: [Dashboard](#) > [June 2011](#) > [Check Entries](#)

1. Prepare Entries >> 2. Check Entries >> 3. Submit Entries

Please ensure your candidates check their Entries carefully.

Check Entries

Pre-Submission reports

| Entries by Candidate Report | Entries by Syllabus Report |
|--------------------------------------------------------------------------------------------------------------------------------------------------------------------------------------------------------------------------------------------------------------------------------------------------------------------|---------------------------------------------------------------------------------------------------------------------------------------------------------------------------------------------------------------------|
| <p>These reports generate a report of all your candidates' entries organised by Candidate.</p> <p> PDF download (Grouping by Candidate) CSV download (Grouping by Candidate, Candidate per Row) CSV download (Grouping by Candidate, Entry per Row) </p> | <p>These reports generate a report of all your candidates' entries organised by Syllabus.</p> <p> PDF download (Grouping by Syllabus) CSV download (Grouping by Syllabus) </p> |

- **Submitting your entries**

Once you have checked you are happy with all the information you have entered you can submit your entries. Please note that entry information cannot be processed by Cambridge until it has been submitted by the centre, and that entry fees will be charged based on the date the entry information is submitted. To submit your entry information, go to the 'Submit entries' section and click on 'Submit entries to CIE'.

CIEDirect
The online tool for Cambridge Exams Officers

UNIVERSITY of CAMBRIDGE
International Examinations

Go to other CIE sites:

Logged in as: Dan Test, Test Centre Zone 5 (ZO500) [My Centre details](#)

Home | Bulletins | My Messages - 7 | Administer Exams | Support Materials | Ask CIE

Dashboard | Results | File Transfers | Candidate Results website

Session: June 2011 [« Back to Dashboard](#)

You are here: [Dashboard](#) > [June 2011](#) > [Submit Entries](#)

1. Prepare Entries >> 2. Check Entries >> 3. Submit Entries

Submitting your Entries to CIE

Once submitted, processing your Entries takes between 15 minutes and 48 hours depending on the volume of entries we are processing at the time.

Entries Confirmation

When your Entries have been processed and approved their status will change from 'Processing' to 'Confirmed'.

Amendments

You can make amendments to your Entries once we have processed them. Amendments will be submitted automatically and processing them also takes between 15 minutes and 48 hours.

Problems

If we find any problems with your entries our customer services team will get in touch.

If you have any problems then please [Ask CIE](#)

Ready to submit?
Have all your candidates checked their entry details?

To check the status of the entries you have submitted, you can look at the 'Status' column under the 'Candidates' tab.

CIEDirect
The online tool for Cambridge Exams Officers

UNIVERSITY of CAMBRIDGE
International Examinations

Go to other CIE sites:

Logged in as: Dan Test, Test Centre Zone 5 (ZO500) [My Centre details](#)

Home | Bulletins | My Messages - 7 | Administer Exams | Support Materials | Ask CIE

Dashboard | Results | File Transfers | Candidate Results website

Session: June 2011 [« Back to Dashboard](#)

You are here: [Dashboard](#) > [June 2011](#) > [Final Entries](#) > [Candidates](#)

Final Entries | Reports

Candidates | Syllabuses | Amendments to Submit | History

Candidates: 1

Filter:

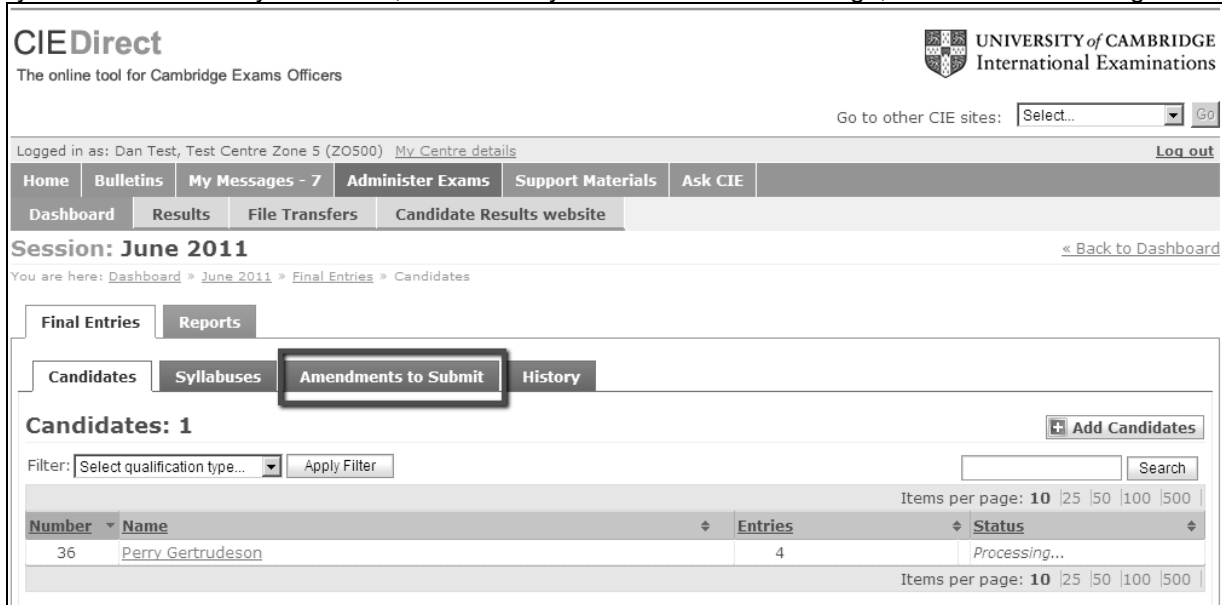
| Number | Name | Entries | Status |
|--------|-----------------------------------|---------|---------------|
| 36 | Perry Gertrudeson | 4 | Processing... |

Items per page: 10 | 25 | 50 | 100 | 500

Entries will usually be processed by CIE Direct within 1-2 hours – however, during exceptionally busy periods, this can take up to 48 hours. (Examples of exceptionally busy periods would include the entry deadline date, or when results are being issued for the previous exam series.) If the status of your entries has not changed to complete within 48 hours, please contact Customer Services.

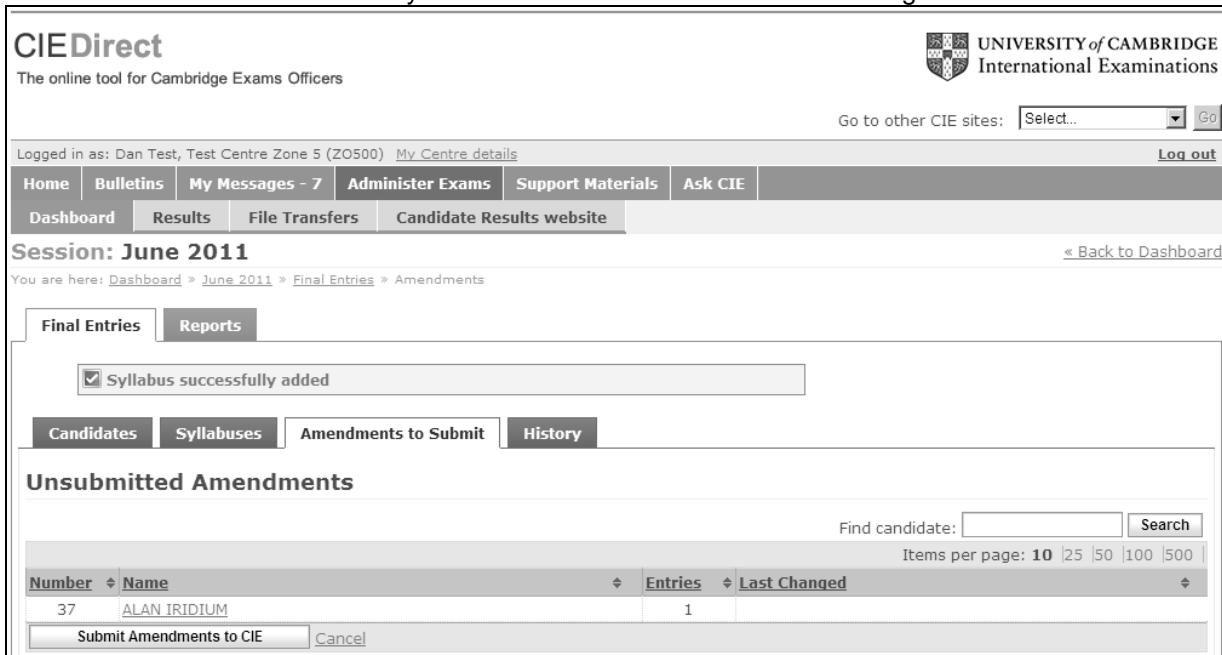
- **Making your Amendments**

Once you have submitted your entries, the tabs on your series view will change, as shown in the image below:



Any further changes you make on CIE Direct - including changes to the option codes of existing entries, addition of syllabus entries to existing candidates, addition of new candidates, withdrawal of candidates/syllabuses or changes to the personal details of the candidates - are classed as 'amendments'. Once the entries you have submitted have been processed by CIE Direct, you can make amendments under the 'Candidates' tab.

Under the 'Amendments to submit' tab you can see the list of amendments waiting to be submitted to Cambridge.



8. Preparation of Entry Information using CIE Direct Desktop

Direct Desktop is an easy-to-use application that allows Cambridge Centres to prepare their entry information offline and submit their final entry data directly. Please note that Direct Desktop only offers the facility to submit entry information, and does not offer reporting features or the ability to submit Forecast Grades and Internally Assessed Marks. Centres requiring these features should use the online entries dashboard on CIE Direct.

The Direct Desktop program can be downloaded from the 'Exam Processing' page of the CIE Direct website, or from the following address - <https://directdesktop.cie.org.uk/ciedirectdesktop/download.html>. Once you have installed the program, you will need to install the necessary basedata for the series before you will be able to submit your entries for the series.

For each examination series, Cambridge will supply a set of basedata containing information about the assessments available in that series, including the syllabus and option codes for each subject. Basedata can be downloaded and installed directly from within the CIE Direct Desktop application, using the link shown below. Basedata will normally be made available approximately three months before the entry closing date, and entries can be submitted as soon as this basedata is available.

CIEDirect Desktop BETA

Home

1. Edit your exam entries

➔

2. Synchronise with CIE

Step 1
Manage your CIE Academic Qualifications entries within this application without the need to be connected to the internet.

Step 2
Submit your data to CIE. For this step you must have an internet connection. Even after submission you can still edit your entries and submit again at any time before the deadline.

Help & Support
Welcome to the CIE Direct Desktop system. If you are new to the system and would like more information about its features, please visit one of the links below:

- [Direct Desktop Help](#)
- [Ask CIE](#)

Alternatively contact CIE at international@cie.org.uk

Choose a session

Basedata

Basedata is available for the following sessions:

- **November 2010**

Update basedata

- **Entering Candidates**

Select the examination series for which you wish to make entries, and you will be taken to the 'Overview' screen, where you have the option to enter a single candidate, or to import multiple candidates from a .csv file.

CIEDirect Desktop BETA

Home

November 2010

Overview Candidates Syllabuses Entry List

Overview

Add candidates to this session

- Add multiple candidates or
- Add a single candidate

There are 0 candidates and 0 entries for this session

- **Add a Single Candidate**

Clicking this link will take you to a form allowing you to manually input the candidate information for a single candidate. Once you have completed entering the details of your candidate, click the 'Save Candidate details' button to add the new candidate to your entries. The fields on this screen are as follows:

- **Candidate Number:**
Enter for each candidate the number which you have allocated. (See **Candidate Numbering** below.) CIE Direct Desktop will allocate a candidate number if one is not entered.
- **Name:**
The maximum number of characters including any spaces is 60. The name of the candidate will appear on entries and results documentation as it is entered here. Centres may enter the name of the candidate as NAME SURNAME or SURNAME: NAME. When using a colon to separate the surname from the name, once the entry is processed, Cambridge will reverse the order of the names when printing entries and results documentation; e.g. SMITH: JOHN will be printed as JOHN SMITH.
- **Date of Birth:**
Candidates' dates of birth should be entered in the standard UK date format, which is dd/mm/yy.
- **Gender:**
Select the gender of the candidate, either 'Male' or 'Female'.
- **CIE Unique Candidate Identifier:**
This field allows the entry of a candidate UCI number, which should be 12 characters long. This information is not required for General Qualifications.
- **NID:**
This optional field allows the entry of a National Identity Number, which can be up to 20 characters long.
- **English First Language?:**
Select whether the candidate speaks English as a First Language.
- **Status:**
Indicate whether the candidate is a 'School' or 'Private' entry.
- **Previous Centre Number:**
If the candidate is carrying forward any marks or results from a previous series, enter the centre number where they sat their previous examinations in this box.
- **Previous Candidate Number:**
If the candidate is carrying forward any marks or results from a previous series, enter the candidate number used in their previous examinations in this box. Please note that this information is still required if the candidate is using the same candidate number in the current series.

- **Add Multiple Candidates**

This screen will allow you to upload a .csv file containing your candidate data into CIE Direct Desktop. The required format for this file is shown below:

| Candidate Number | CIE UCI | National ID | Name | Gender | Date of Birth | School/Private Indicator | Previous Centre Number | Previous Candidate Number | First Language English? |
|------------------|--------------|-------------|------------|--------|---------------|--------------------------|------------------------|---------------------------|-------------------------|
| 0001 | XX123098765X | 001234 | JOHN SMITH | M | 05/08/1996 | P | XX123 | 0007 | Y |

A .csv template file can also be downloaded from within the CIE Direct Desktop program. Only the Name, Gender and School/Private Indicator are required – all other fields are optional. However, please note that unused fields in the .csv file cannot be removed. (ie. A 'National ID' column must still be included in the file, even if no candidates have provided a National ID number.)

- **Making Syllabus Entries**

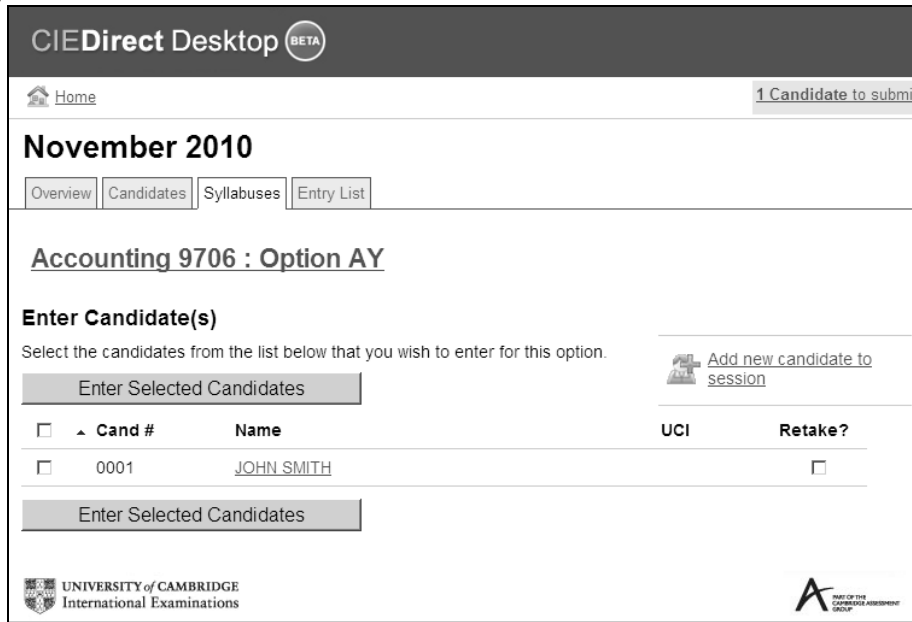
There are two options for how you can make your syllabus entries:

- **By Candidate**

If you wish to make the entries for each candidate individually, then use the 'Candidates' tab to display a list of the candidates entered in this series. You can then select the required candidate by clicking their name. On the following page, click the 'Create a New Entry' link, and select the required syllabus and option code from the list provided.

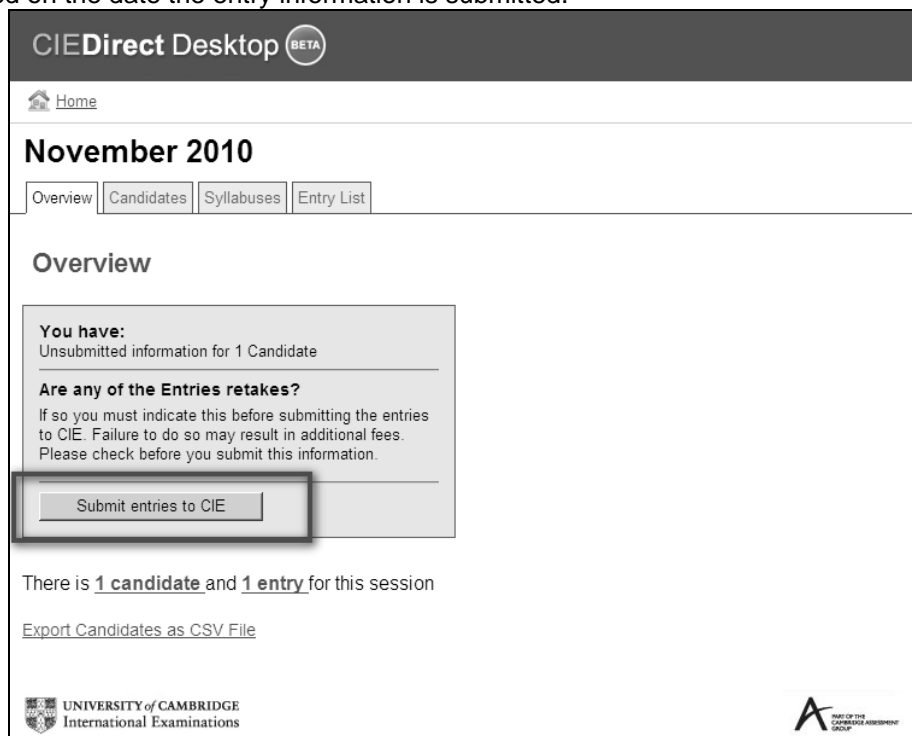
- **By Syllabus**

If you intend to enter a number of candidates for the same syllabus option(s), it may be quicker to use the 'Syllabus' tab. In this screen, you can choose the syllabus and option that you require and then a list of all the candidates entered in the current series will be shown. To enter candidates for the selected option, simply place a tick beside the name of every candidate that you wish to be entered for that syllabus/option. When you have selected the required candidates, click 'Enter Selected Candidates' to add the required syllabus entry for the selected candidates.



- **Submitting Entries**

When you have made all your entries in CIE Direct Desktop then you will need to submit the entry data to Cambridge for processing, which can be done using the 'Overview' tab. Please note that entry information cannot be processed by Cambridge until it has been submitted by the centre, and that entry fees will be charged based on the date the entry information is submitted.



- **Making your Amendments**

Any further changes you make on Direct Desktop after your final entries have been submitted - including changes of personal details, amendments to the option codes of existing entries, addition of new candidate/syllabus entries or withdrawal of candidates/syllabuses can be submitted in the same way as your final entries.

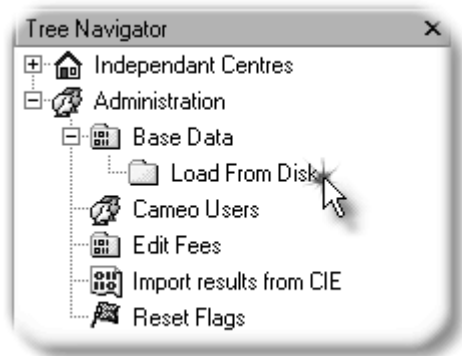
9. Preparation of Electronic Entry Files using CAMEO

CAMEO is a piece of software that allows Cambridge Centres to build a database of information about their candidates and the examinations that they take. CAMEO allows information to be sent from Cambridge to Centres, and from Centres to Cambridge as data files that can be 'imported' into, or 'exported' from CAMEO.

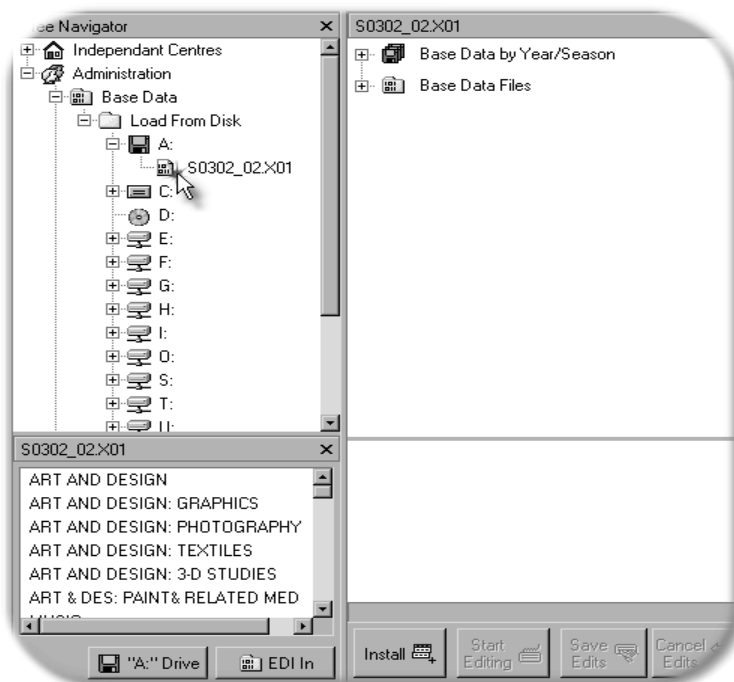
For each examination series Cambridge will supply a set of basedata that tells CAMEO about the assessments that are available in that series. A set of basedata is a set of 6 files that contain information about syllabuses and option codes and can be used to enter candidates. It also holds such information as timetable dates for components, the session (morning or afternoon) and the time allowed. Basedata files will be made available via the CIE Direct website (<https://direct.cie.org.uk>) approximately five months before the entry closing date.

- **Importing Basedata**

Once you have downloaded the relevant basedata files from CIE Direct, it needs to be saved in the directory C:\Program Files\UCLES\CIE CAMEO 32\Edlin. Then, in CAMEO click on 'Administration' → 'Basedata' → 'Load from disk'.

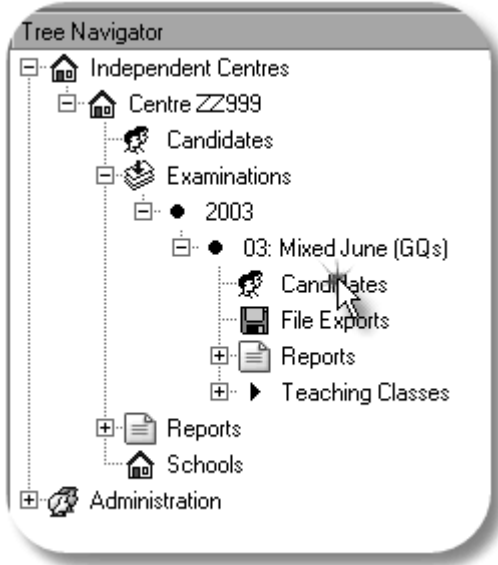


If the basedata file is saved in CAMEO's EDlin directory then click the EDI In button. If the file is saved elsewhere on the system then locate it and highlight the file name. The selection window will show a preview of the syllabuses that are contained within that basedata set (as shown below). At this point click the 'Install' button to load the basedata into CAMEO.



- **Entering Candidates**

Select the 'Candidates' node that appears under the examination series for which you wish to make entries.



The Data Window will now show you the area into which you enter details of your candidates.

Click on the 'Insert Item' button at the bottom of the screen and enter the details of your first candidate. CAMEO will automatically apply a candidate number of 0001 for the first candidate. Further candidates will automatically be given the next available number. You can change this to a number of your choice, however please always enter candidate numbers as 4 digits (i.e. 23 is entered as 0023).

The fields on this screen are as follows:

- **Name:**
The maximum number of characters including any spaces is 60.

The name of the candidate will appear on entries and results documentation as it is entered here. The centre may wish to enter the name of the candidate as NAME SURNAME or SURNAME: NAME. When using a colon to separate the surname from the name, once the entry is processed, Cambridge will reverse the order of the names when printing entries and results documentation; e.g. SMITH: JOHN will be printed as JOHN SMITH

- **Gender:**
A drop down list allows you to select Male or Female.

- **Date of Birth:**
Candidates' dates of birth should be entered in the date format specified by your Windows Regional Settings. Where these are set to English (UK) this will be dd/mm/yy.
- **NID:**
This is an optional field to allow the entry of a National Identity Number that can be up to 20 characters in length.
- **Chargeable:**
A tick in this box indicates you wish a one off entry fee to be applied to the candidate. This is purely used by CAMEO's internal reports and does not affect any data that is transmitted to Cambridge. The amount can be entered in the Local Fee box on this screen.
- **English First Language?:**
A tick in this box indicates that English is the candidate's first language. This information is only required for candidates taking the Checkpoint examinations.
- **School:**
This will allow you to assign a school sub-code to the candidate. Please note that this feature is only available to certain customers and should not be used without the express prior approval of Cambridge. Normally all Centres (including attached Centres) should be entered as separate Centres.
- **Status:**
A drop down list allows you to classify a candidate as a 'School' candidate or a 'Private' candidate. The default is 'School' candidate.
- **Previous Entry Details:**
If the candidate is carrying forward any marks or results then select 'Candidate was previously entered at this (or another) Centre' from the drop down list. This will cause 2 new boxes to appear where you can enter the candidate's previous centre and candidate number. Please always enter Centre numbers using uppercase letters.

Enter the details of the candidate and then click the 'Save Insert' button. Repeat this step for all of your candidates. You should always enter candidate number, name, gender and date of birth for your candidates.

- **Making Entries**

There are two options for how you can make your entries:

- **By Candidate**

If you wish to make the entries for each candidate individually, then use the Entry by Candidate node. In this screen highlight the required candidate in the 'Selection Window' and then simply select the syllabus/option required in the 'Data Window' on the right. Then click on the 'Insert Item' button and the candidate will be entered for the selected syllabus option (information is automatically saved on this screen so you do not need to press save every time you make an entry).

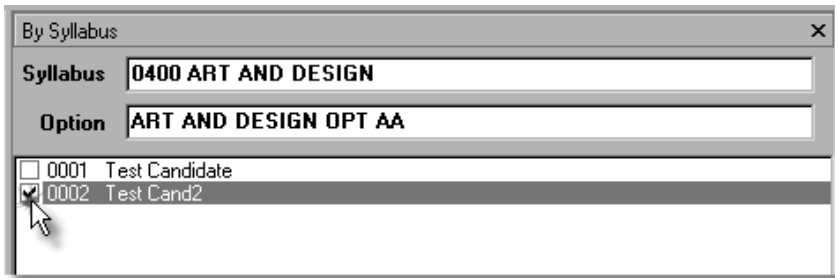
The screenshot shows a software interface for entering candidate data. At the top, there are input fields for 'Exam Year' (2003), 'Series' (03), and 'Description'. Below these are 'Candidate N.' (0001) and 'Candidate Name' (Example Candidate One). The main area is split into two tables:

| Available Syllabus Options | | Option ID | Title |
|----------------------------|------------------------------|-----------|-----------------------------|
| 0138 | ENGLISH (HALF CREDIT) | 0138A | ENGLISH (HALF CREDIT) OPT A |
| 0390 | MATHEMATICS: STATISTICS | 0138B | ENGLISH (HALF CREDIT) OPT B |
| 0400 | ART AND DESIGN | 0138C | ENGLISH (HALF CREDIT) OPT C |
| 0402 | ART AND DESIGN: GRAPHICS | | |
| 0403 | ART AND DESIGN: PHOTOGRAPHY | | |
| 0404 | ART AND DESIGN: TEXTILES | | |
| 0405 | ART AND DESIGN: 3-D STUDIES | | |
| 0406 | ART & DES: PAINT&RELATED MED | | |

| Assigned Options | | |
|------------------|-----------|------------------------------------|
| Syllabus ID | Option ID | Title |
| 0510 | 0510A | ENGLISH AS A SECOND LANGUAGE OPT A |
| 0580 | 0580A | MATHEMATICS (W/OUT C/WORK) OPT A |

- **By Syllabus**

If you have a number of candidates who are being entered for the same syllabus option(s) then it may be quicker to use the 'Entries by Syllabus' option. In this screen choose the syllabus and option that you require in the 'Selection Window' and then a list of all the candidates in this examination series will appear in the 'Data Window'. To enter candidates simply click the 'Start Editing' button at the bottom of the screen and then place a tick beside the name of every candidate that you wish to be entered for that syllabus/option. When this is done click on 'Save Edits'.

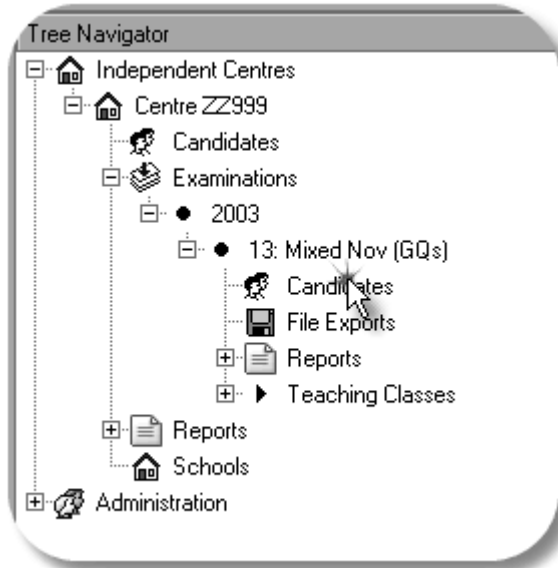


- **Making Entries for Retake Syllabuses**

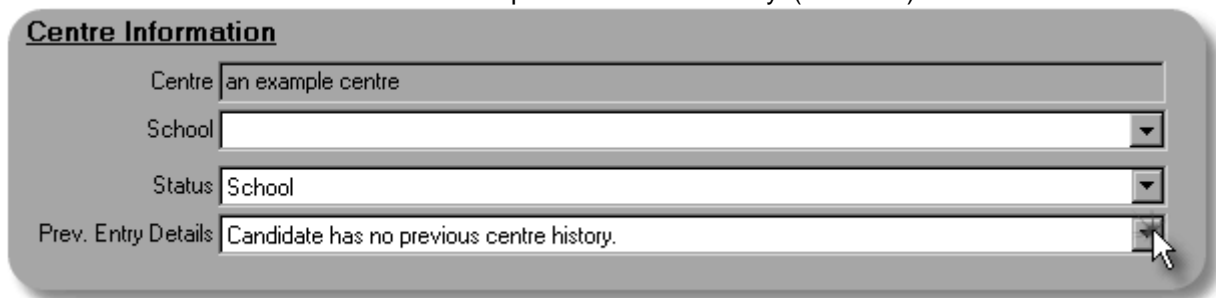
In the November series for General Qualifications, candidates who are retaking syllabuses that they attempted in the previous June series are allowed to submit these entries up to a later closing date without incurring late entry fees. For any entry to be accepted as a retake, previous entry details need to be supplied for the candidate concerned - even if these details are the same as when they sat the syllabus in the June series - and each syllabus being entered as a retake must be indicated as such.

- **Adding Previous Entry Details**

To add your previous entry details, select the Candidates node on the Tree.



Click on the 'Insert Item' button and enter the Candidates' details into the Data Window in the usual way. You will see that there is a drop down list labelled 'Prev. Entry Details'. When you first input details of a candidate this will show the statement 'Candidate has no previous centre history' (as below).



Click on the drop down list and select the statement 'Candidate was previously entered (at this or another Centre).' When you have done this two new boxes will appear for you to enter the previous Centre and candidate number. Please always enter Centre details using uppercase letters and candidate numbers as four digits (i.e. 1 is entered as 0001).

Centre Information

Centre: an example centre

School: [dropdown]

Status: School [dropdown]

Prev. Entry Details: Candidate was previously entered (at this or another Centre): [dropdown]

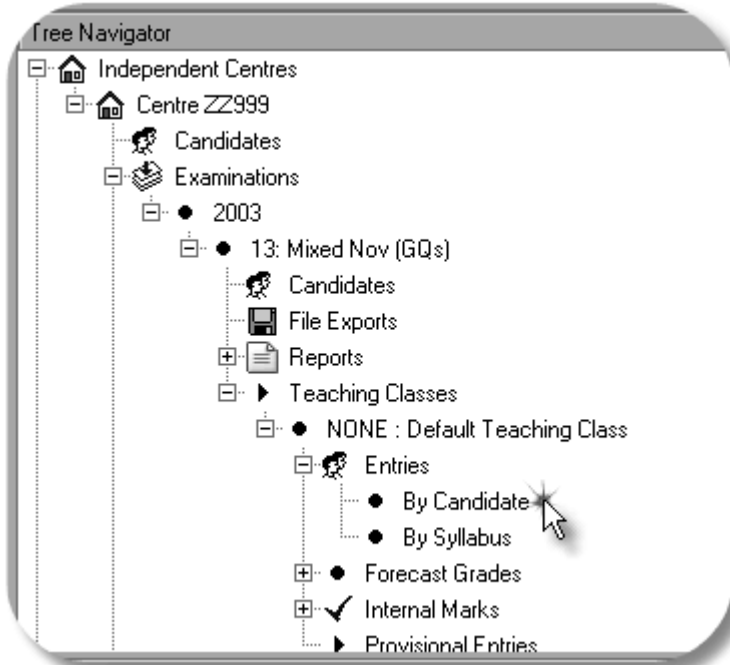
Prev. Centre No.: ZZ999

Prev. Cand. No.: 0001

When the data has been entered click on the 'Save Insert' button.

- **Setting the Retake Indicator**

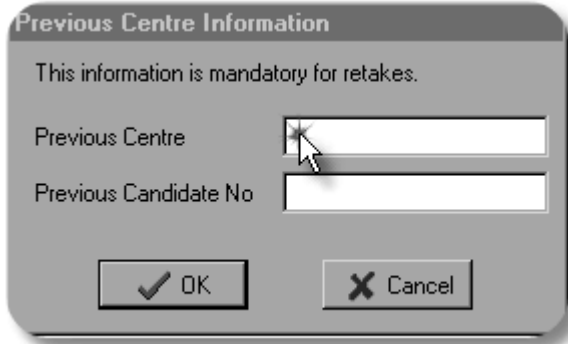
The November retake indicator is only available on the 'Entries by Candidate' screen. If it is more convenient, you can make your entries using the 'Entries by Syllabus' screen and then use the 'Entries by Candidate' screen to assign the retake indicator to those candidates who are retaking particular syllabuses.



Highlight the required candidate in the Selection Window and make the candidate's entries in the usual way. You will notice that there is a small box that appears to the right of the syllabus/option title labelled 'Retake'. If the syllabus is one that the candidate is retaking from the previous June then place a tick in the box. In the example shown below, the candidate is retaking 0500 First Language English but is also entering for 0580 Mathematics which is not a retake.

| Syllabus ID | Option ID | Title | Retake |
|-------------|-----------|----------------------------------|-------------------------------------|
| 0500 | 0500A | FIRST LANGUAGE ENGLISH OPT A | <input checked="" type="checkbox"/> |
| 0580 | 0580A | MATHEMATICS (w/OUT C/WORK) OPT A | <input type="checkbox"/> |

If you attempt to tick the 'Retake' box for a candidate where previous entry details are not held within Cameo then you will see the following box appear on the screen.



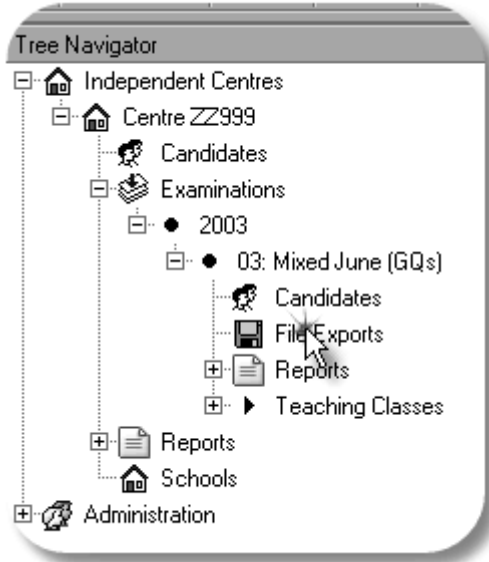
If you know the previous entry details for the candidate then you can key them into the box and press the 'OK' button. If you do not have these details, press the 'Cancel' button.

Please note that whenever candidates are entered for retake examinations, the previous entry details for the candidates' June sitting must be included with the entry. Without this information the candidate cannot be entered as a retake, and late entry fees will be applied.

Because CAMEO allows you to set the retake indicator separately for each syllabus entry, you can export both retake and non-retake entries in the same entry and amendment files. However, please ensure that the retake indicator is set for all retake entries **before** the entry file is exported. If the retake indicator is not set when the entries are first received at Cambridge, they will be treated as standard late entries and may attract late entry fees.

- **Exporting Entries**

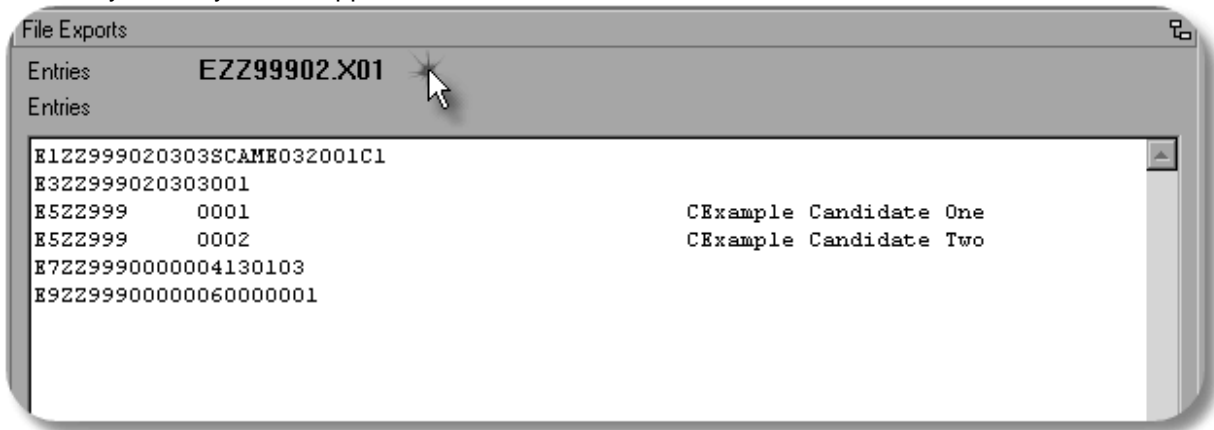
When you have made all your entries in CAMEO then you need to create an entry file that can be uploaded to Cambridge via the CIE Direct website. We would recommend that you have no programs running except Windows and CAMEO when exporting files. To do this, select the File Exports node on the Tree.



Click on the arrow to the right of the drop down menu in the selection window to bring up the list of export types and then select 'Entries'. You need to select entries from the list even though it will appear in the window when you open the screen.



A preview of your entry file will appear in the 'Data Window'.



Click the Export to Disk button to create the file.

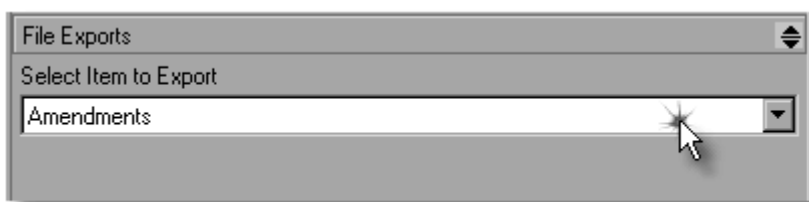


You will be given the option of saving the file to CAMEO's EDIout directory, to a floppy disk or to another location that you can specify. CAMEO will confirm that the entries have been successfully exported.

- **Making your Amendments**

Once you have submitted your entries, any further changes you make to candidate details or entry information on CIE Direct are classed as 'amendments'. Once you have made the required changes in your CAMEO database, you will need to create an Amendment file that can be uploaded to Cambridge via the CIE Direct website.

Amendment files can be created by using the File Exports Node on the Tree, in the same manner as a Final Entry file. However, when clicking on the drop down menu in the selection window, you should select the option 'Amendments', rather than 'Entries'. (Once you have exported your Final Entry file, the 'Entries' option will no longer appear in the list – CAMEO will create only one Final Entry file for each series.) You will need to select amendments from the list even though it will appear in the window when you open the screen.



As with your initial entry file, a preview of your amendment file will appear in the Data Window to be checked before this is submitted to Cambridge. The file will only contain those candidates whose details or entries have changed since your last exported file.

- **Further User Guides**

There are more user guides detailing CAMEO's functions available for download from the CIE Direct website under the heading 'Support Materials'.

10. Preparation of Electronic Entry Files using the Final Entry Form

Centres which are unable to use the entry methods listed above can download an Excel-based Final Entry Form from the 'Support Materials' section of CIE Direct, which can be completed offline and submitted to Cambridge by following the procedure listed below under 'Uploading your entry file to CIE Direct'.

Centres should submit all entries for an examination series on the same entry form, even if the centre has candidates entering for different qualifications, i.e. candidates entering for IGCSE, GCE O Level and GCE AS & A Level. Only entries for the Cambridge International Primary Programme and Checkpoint must be submitted on different entry forms. A different entry form is also required for Checkpoint entries.

When you open the Final Entry Form, you will get a message warning that it contains macros. In order for the form to work, please click 'Enable Macros'. Please note that macros have been created within the Entry Form to allow Cambridge to process the data more efficiently and accurately; any changes made by the Centre to the format of this entry form will delay the processing of the Centre's entries which could also result in the processing of incorrect entries.

• Completing the Entry Form

Please complete the Final Entry Form according to the following instructions – these are numbered 1-11 to correspond with column numbers or box numbers on the Entry Form.

- **(1) Examination of:**
Please select the examination series from the drop down menu, e.g. 'November IGCSE/GCE/Pre-U' for the November examination series.
- **(2) Centre Number:**
Insert your Centre Number.
- **(3) Centre Name:**
Insert the name of your Centre in CAPITAL LETTERS.
- **(4) Year:**
Please select the year from the drop down menu, e.g. Choose '2011' for the 2011 examination series.
- **(5) Candidate Number:**
Enter for each candidate the number which you have allocated (see **Candidate Numbering** below).
- **(6) Candidate Name:**
Enter each candidate's name in CAPITAL LETTERS.

The maximum number of characters including any spaces is 60. The name of the candidate will appear on entries and results documentation as it is entered here. The centre may wish to enter the name of the candidate as NAME SURNAME or SURNAME: NAME. When using a colon to separate the surname from the name, once the entry is processed, Cambridge will reverse the order of the names when printing entries and results documentation; e.g. SMITH: JOHN will be printed as JOHN SMITH.

- **(7) Sex M/F:**
Select M for a male candidate or F for a female candidate from the drop down menu.
- **(8) Date of Birth:**
Enter the date of birth of each candidate numerically in dd/mm/yy, e.g. for 5 August 1996, enter:

| | | | | | |
|---|---|---|---|---|---|
| 0 | 5 | 0 | 8 | 9 | 6 |
|---|---|---|---|---|---|
- **(9) Candidate Status:**
For a school candidate: Leave blank
For a private candidate: Select P from the drop down menu.
- **(10) Previous Entry:**
Please complete both the previous Centre Number and previous Candidate Number information for all candidates who have previously taken Cambridge examinations. This is essential information required for candidates entering for a carry forward component, Staged Assessment at GCE AS & A Level or retaking a syllabus. Failure to submit this information may result in the candidate(s) not receiving a result.

Previous Centre Number: Enter the Centre Number used in the previous examination.
Previous Candidate Number: Enter the Candidate Number used in the previous examination.

In the event that candidates have taken Cambridge examinations in more than one previous exam series, the details for the most recent previous entry should be provided.

- **(11) Syllabus Details:**

A List of Syllabuses, in alphabetical order, is set out in this booklet. Ensure that each candidate is entered for the correct syllabus/option as follows:

Syllabus Code: Enter the 4-figure syllabus code
Option Code: Enter the letter option code (where applicable). Candidates making entry for more than 12 syllabuses may be continued on the following line, in which case columns 5-10 on the left hand side of the form should be left blank (i.e. there is no need to repeat the candidate details).

Retake?: Please select Y from the drop down option if the entry is being made for the November examination series for a syllabus that the candidate attempted in the previous June series of the same year.

Please note that whenever candidates are entered for retake examinations, the previous entry details for the candidates' June sitting must be included with the entry. Without this information the candidate cannot be entered as a retake.

Examples of entries for various syllabuses are given below:

Example 1: IGCSE English as a Second Language

| Syllabus Code | Option |
|---------------|--------|
| 0510 | EX |

Components 21, 41 and 5

Example 2: GCE O Level Combined Science

| Syllabus Code | Option |
|---------------|--------|
| 5129 | |

All components are compulsory

IMPORTANT: If a candidate is being entered for more than one syllabus, then please make sure that the columns provided for the syllabus code and option code are used in consecutive order regardless of the qualification being entered.

An example of a Final Entry Form which is filled in correctly is given on page 24 of this booklet.

- **Making your Amendments**

Any changes to your entries after your entry form have been submitted must be sent on a revised copy of the same entry form originally used to submit the entries. This includes changes to the option codes of existing entries, addition of syllabus entries to existing candidates, addition of new candidates, withdrawal of candidates or syllabuses or changes to the personal details of the candidates. This revised entry form must be a full and accurate reflection of your centre's entries for the current exam series, as your entry information will be updated to match the new entry form when this is processed.

Please note that candidates should be withdrawn by selecting their candidate number on the entry form and clicking the 'Withdraw Candidate' button found in the top-right corner of the form. The details of the candidate should not be deleted from the form completely.

IMPORTANT: Centres must not submit entry amendments or additional entries on a new copy of the entry form. Using a new entry form to submit such changes can cause some or all of the previous entries for the centre to be overwritten.

11. Uploading your entry file to CIE Direct

If you have created an entry file using CAMEO or the Final Entry Form, you should upload this to Cambridge via the CIE Direct website so that your entries can be processed. Log in to CIE Direct in the usual way and select 'Examination Processing', 'File Exchange' and 'Upload'. You can then select the entry file that you have created and upload it directly to Cambridge. All centres should check their Upload History regularly after submitting entry files, to ensure that the files have been received by Cambridge.

If you currently submit your entries to another body, such as a local ministry of education, rather than directly to Cambridge then you should continue to follow this arrangement.

12. Candidate Numbering

Centres must allocate a candidate number to each candidate. For each candidate a unique number within the range 1 to 9999 must be used. Candidate numbers need not be consecutive but must be listed in ascending numerical order. All subsequent lists of candidates provided by Cambridge will be in candidate number order.

13. Previous Entry Details

Previous entry details should be supplied for all candidates who have taken Cambridge examinations in a previous exam series. Where candidates have sat for Cambridge examinations in more than one previous exam series, the details for the most recent previous entry should be provided.

This information is a requirement when candidates are entering for a retake examination, Staged Assessment at GCE AS & A Level, a carry forward component, or aggregating for either the ICE or AICE Group Awards over more than one examination series.

14. Retake Entries

Retake syllabuses may only be submitted in the November examination series.

Cambridge will only consider a syllabus as a retake entry if the candidate sat the same syllabus, regardless of the option code, *in the June examination series of the same year*. In these cases, previous entry details for this June series entry must be provided for each candidate entering for a retake syllabus, and a retake indicator must be included for each syllabus that the candidate is retaking. This information must be included when the relevant entries are first submitted to Cambridge, and cannot be added later. **Without this information, the entry will not be categorised as a retake entry and late entry fees will be applied accordingly.**

If you are using CIE Direct or CIE Direct Desktop, a tickbox will be displayed when you make your syllabus entries, which will allow you indicate the entry as a retake. You must ensure that this box has been ticked, and that the necessary previous entry details have been provided, before submitting your entries to Cambridge.

If you are using CAMEO, you will need to use the 'Entries by Candidate' screen to add the retake indicator for each relevant syllabus entry – this facility is not available on the 'Entries by Syllabus' screen. Detailed instructions on how to add the retake indicator for your entries can be found on page 16 of this booklet. CAMEO will not allow candidates to be entered as a retake until previous entry details have been provided.

If you are using the Final Entry Form, you must enter a 'Y' in the 'Retake?' column to the right of each retake syllabus entry. This column will only be unlocked if you have selected 'November IGCSE/GCE/Pre-U' as the examination series at the top of the entry form. (Retakes cannot be submitted in any other examination series.)

15. Carrying Forward of Marks for IGCSE and GCE O Level

Some IGCSE and GCE O Level syllabuses permit candidates to carry forward school-based assessment, practical and speaking/oral marks once within a thirteen month period, i.e., from November 2010 to November 2011 or from June 2011 to November 2011. The component information column indicates which code should be used for the carrying forward of marks. Examples of two such entries are given below:

Example 1: IGCSE First Language Spanish

| Syllabus Code | Option |
|---------------|--------|
| 0502 | ZO |

For a candidate entering for component 02, 05 and 84 carrying forward the Coursework Portfolio mark received for component 04 in a previous series.

Example 2: IGCSE English as a Second Language

| Syllabus Code | Option |
|---------------|--------|
| 0510 | CX |

For a candidate entering for component 11, 31 and 85 carrying forward the Oral Communication mark received for component 05 in a previous series.

16. Entry Exclusions

Candidates may not be entered for in any one examination:

- Subjects with identical titles, at the same qualification level.
- More than one of the alternatives in any subject, except where specified in the Syllabuses.
- Any combination of subjects or papers forbidden by the subject Syllabuses.
- Subjects with identical titles from IGCSE and GCE Ordinary Level.

17. Viewing Entries Online

After submitting entries to Cambridge, you will be able to view your Centre's entries on the CIE Direct website, by accessing the 'Exam Processing' page, and selecting the appropriate exam series.

To access the website, you will need a username and password. These can be obtained by sending a fax to Customer Services, including your Centre number and the name of the Examinations Officer, to ++44 1223 553558. You will then receive a fax from Cambridge with your username, password and the website address.

The website is only available to registered Centres and not to students.

The website will show the current entry information Cambridge holds for your Centre. If there are any amendments that need to be made after viewing the website, you should make the necessary changes either in CAMEO or the Entry Form and submit the entry amendments at your earliest. It is important that all entry amendments are submitted to Cambridge to ensure that the data held by the Centre matches that held by Cambridge.

18. Documents you will receive as a Result of Making Entries

Copies of all the documents below will be despatched in hard copy once your entries have been received and processed. Centres should **not** assume that their entries have been received by Cambridge until the documentation listed below has been received. Examples of each document can be found from pages 16-19 of this booklet.

- **Statements of Entry**
A Statement of Entry for each candidate.
- **Candidate Entry Listing**
A Candidate Entry Listing showing the entry details of each candidate entered for the examination.
- **Centre Summary of Entries**
A Centre Summary of Entries showing the total number of examination entries, by syllabus and component.
- **Centre Entry Warning List**
A Centre Entry Warning List.

It is responsibility of the Centre to check the above documents. If any errors, discrepancies or queries are found then the Centre should contact Customer Services immediately.

EXAMPLE OF A FINAL ENTRY FORM FILLED IN CORRECTLY

| 1 Examination of: | November IGCSE/IGCE/Pre-U | 2 Centre Number: | XX123 | 3 Centre Name: | EXAMPLE CENTRE | 4 Year: | 2011 | | | | | | |
|----------------------------------------------------------------------------------------------------------------------------------------------------------------------------------------------------------------------------------------------------------------------------------------------------------------------------------------------------------------------------------------------------------------------------------------------------------------------------------------------------------------------------------------------------------------------------|---------------------------|------------------|--------------------------|----------------|------------------------------|---------------------|-------------|---------|---------------|-------------|---------|---------------|-------------|
| ENTRY AMENDMENTS / ADDITIONAL ENTRIES | | | | | | | | | | | | | |
| <p>When making entry changes, centres must update their entry form with the required changes and submit the revised form to CIE. Please bear in mind that candidate numbers cannot be changed once they have been allocated. Additional candidates should be allocated a new candidate number and added at the bottom of the candidate list. If a candidate should be withdrawn entirely from the current examination series, please select the required candidate number and click the 'Withdraw Candidate' button above - do not remove the candidate from the form.</p> | | | | | | | | | | | | | |
| RETAKE ENTRIES | | | | | | | | | | | | | |
| <p>Retake syllabuses may only be submitted in the November examination series. CIE will only consider a syllabus as a retake entry, if the candidate sat the same syllabus, regardless of the option code, in the previous June examination series of the same year. In these cases, previous entry details for the candidate's June entry must be included and the retake indicator column completed for each retake subject. Without this information, the entry will not be categorised as a retake entry, and late entry fees will be applied accordingly.</p> | | | | | | | | | | | | | |
| 5 Candidate Number | 6 Candidate Name | 7 Sex M/F | 8 Date of Birth dd mm YW | 9 Status | 10 Previous Entry Centre No. | 11 Syllabus details | Option Code | Retake? | Syllabus Code | Option Code | Retake? | Syllabus Code | Option Code |
| 0001 | Example Candidate 1 | M | 31 01 94 | | | 0420 | AD | | 0580 | AD | | 0683 | CD |
| 0002 | Example Candidate 2 | F | 27 12 93 | P | XX123 | 9701 | SO | | 9709 | AD | | 9719 | AD |
| 0001 | Candidate One | M | 14 10 91 | | | 0510 | EX | | 0580 | AX | | 0610 | CX |
| 0002 | Candidate Two | F | 11 02 91 | P | | 9700 | AX | | | | | | |
| 0003 | Candidate Three | M | 09 10 91 | | | 9700 | S1 | | 0580 | BX | | 0500 | CR |
| 0004 | Candidate Four | F | 15 07 91 | | XX124 | 0510 | EX | Y | 0580 | BX | Y | 0520 | BX |
| 0005 | Candidate Five | M | 25 10 92 | | XX125 | 0520 | AX | | 0580 | BX | | ICE | |
| 0006 | Candidate Six | M | 10 11 91 | | | 9713 | AX | | 9719 | AX | | 9708 | AX |

Candidate One – School candidate entering for three IGCSE syllabuses in the November 2011 session.

Candidate Two – Private candidate entering for one GCE AS & A Level syllabus in the November 2011 session.

Candidate Three – School candidate entering for one GCE AS & A Level syllabus and two IGCSE syllabuses in the November 2011 session.

Candidate Four – School candidate entering for three IGCSE syllabuses in the November 2011 session, two of which are retake entries.

Candidate Five – School candidate entering for two IGCSE syllabuses, and entering for the ICE group award over two sessions.

(NB: Previous entry details have been provided for an earlier session, when this candidate would have taken the other five qualifying subjects for the award.)

Candidate Six – School candidate entering for three GCE AS & A Level syllabuses, and entering for the AICE group award over one session.



Statement of Entry

November 2011

All entry details, including the spelling of your name and date of birth must be checked for accuracy

| | | |
|------------------------------------------------|-------------------------------------|-----------------------------------------|
| Candidate Name EXAMPLE CANDIDATE ONE | Date of Birth 22 MAY 1994 | Centre / Cand. No. XX123/0001 |
|------------------------------------------------|-------------------------------------|-----------------------------------------|

| | | |
|--------------------------------------|---------------------------------------------|--------------------|
| Centre Name EXAMPLE CENTRE | Previous Entry Details XX124/0045 | Gender F |
|--------------------------------------|---------------------------------------------|--------------------|

| Syllabus/Component | Syllabus and Component Titles | Exam Date | Time |
|--------------------|-------------------------------------------------|-----------|------|
| IGCSE | | | |
| 0510/AX | English as a Second Language (Oral Endorsement) | | |
| 05 | Oral Communication | | |
| 11 | Reading and Writing (Core) 11 | 18 OCT | AM |
| 31 | Listening (Core) 31 | 25 OCT | AM |
| 0520/BX | French | | |
| 03 | Speaking | | |
| 11 | Listening 11 | 28 OCT | PM |
| 21 | Reading and Directed Writing 21 | 26 OCT | PM |
| 41 | Continuous Writing 41 | 7 NOV | PM |
| 0580/AX | Mathematics (Without Coursework) | | |
| 11 | Paper 11 (Core) | 27 OCT | AM |
| 31 | Paper 31 (Core) | 31 OCT | AM |
| 0610/CX | Biology | | |
| 11 | Multiple Choice 11 | 18 NOV | PM |
| 31 | Extended Theory 31 | 26 OCT | PM |
| 61 | Alternative to Practical 61 | 27 OCT | PM |
| 0625/CX | Physics | | |
| 11 | Multiple Choice 11 | 17 NOV | AM |
| 31 | Extended Theory 31 | 7 NOV | AM |
| 61 | Alternative to Practical 61 | 8 NOV | AM |

Candidate Entry Listing November 2011

This statement confirms your CIE examination entries accepted for the session shown.

| Centre Number | School | Centre Name | | | | | | | |
|----------------------------|----------------------------------------|-----------------------|----------------------------------------|--------|---------------|-----|--|--|--|
| XX123 | XX123 | EXAMPLE CENTRE | | | | | | | |
| Candidate No. and Name | Syllabus, Option and Component Details | | Syllabus Title | Gender | Date of Birth | S/P | | | |
| 0001 EXAMPLE CANDIDATE ONE | 0510 AX (05 11 31) | | ENGLISH AS A SECOND LANGUAGE FRENCH | F | 22 MAY 1994 | S | | | |
| | 0520 BX (03 11 21 41) | | MATHEMATICS (W/OUT COURSEWORK) | | | | | | |
| | 0580 AX (11 31) | | BIOLOGY | | | | | | |
| | 0610 CX (11 31 61) | | PHYSICS | | | | | | |
| | 0625 CX (11 31 61) | | | | | | | | |
| 0002 EXAMPLE CANDIDATE TWO | 0510 AX (05 11 31) | | ENGLISH AS A SECOND LANGUAGE FRENCH | M | 30 SEP 1995 | S | | | |
| | 0520 BX (03 11 21 41) | | MATHEMATICS (W/OUT COURSEWORK) | | | | | | |
| | 0580 AX (11 31) | | BIOLOGY | | | | | | |
| | 0610 CX (11 31 61) | | PHYSICS | | | | | | |
| | 0625 CX (11 31 61) | | | | | | | | |

Centre Summary of Entries November 2011

This list summarises, in syllabus code order, the syllabuses and components for which entries have been submitted by the centre identified below.

| Centre Number | School | Centre Name | Qualification | Syllabus Code / Title | Component Code / Title | No of Entries |
|---------------|--------------|-----------------------|------------------|--------------------------------------|--------------------------------------------------------------------------------------------------|----------------------|
| XX123 | XX123 | EXAMPLE CENTRE | | | | |
| | | | GCE AS & A LEVEL | 8693 ENGLISH LANGUAGE | 11 Passages for Comment 11 21 Composition 21 | 1 1 |
| | | | | 9709 MATHEMATICS | 11 Paper 11 21 Paper 21 | 4 4 |
| | | | IGCSE | 0500 FIRST LANGUAGE ENGLISH | 11 Reading Passages (Core) 11 31 Directed Writing & Composition 31 | 10 10 |
| | | | | 0520 FRENCH | 03 Speaking 11 Reading and Directed Writing 11 21 Listening 21 41 Continuous Writing 41 | 15 15 15 10 |
| | | | | 0580 MATHEMATICS (W/OOUT COURSEWORK) | 11 Paper 11 (Core) 21 Paper 21 (Extended) 31 Paper 31 (Core) 41 Paper 41 (Extended) | 20 5 20 5 |

Centre Entry Warning List November 2011

| Centre Number | School | Centre Name |
|---------------|--------|----------------|
| XX123 | XX123 | EXAMPLE CENTRE |

| Warning Message | Candidate Number | Date | Timetable Clash Analysis |
|-----------------|------------------|--------------------------|--------------------------|
| | 0004 | 8 Nov 11 am | |
| | 0017 | 0450 (11) with 0625 (61) | |
| | 0023 | 0450 (11) with 0625 (61) | |
| | 0135 | 10 Nov 11 am | |
| | | 9706 (41) with 9708 (11) | |

Entering for an Examination

A notice to candidates

Before your school submits its entries to Cambridge, you will be asked to check your entry and confirm that it is correct.

You must pay particular attention to the following points:

A Are your first forename and family name correctly spelt, and are the initials of your other forenames correctly shown? This is most important, because certificates show the names given on the entry form. Centre and candidate details including the spelling of name and date of birth must be checked when Statements of Entry (and Statements of Result) are issued. Any inaccuracies must be reported to Cambridge immediately upon discovery and prior to the issue of certificates. A fee will be charged for issuing a replacement certificate due to incorrect candidate and/or Centre details. This service is available only within 18 months of the date of issue of the original certificate.

B Are your date of birth and your sex code correctly shown?

C Have you been entered for all the syllabuses you are taking and for the correct components within each syllabus? You should pay particular attention to your entry for syllabuses where there are alternative syllabuses.

D Is the total number of syllabuses you are taking shown correctly?

You must realise that in checking and signing for your entry you are taking responsibility for its accuracy. You will not be permitted to make changes later.

A copy of this notice should be displayed where candidates can read it, or it should otherwise be brought to their attention before they check their entries.

CAMBRIDGE INTERNATIONAL PRIMARY PROGRAMME

The Cambridge International Primary Programme gives schools a framework to develop Mathematics, English, Science skills and above all knowledge in young children. The Primary Programme provides guidance for curriculum development, classroom teaching and learning, and allows teachers to assess children's learning as they progress.

The benefits of the Cambridge International Primary Programme are:

- **Foundation for secondary education**
The Primary Programme aids identification of a student's strengths and weaknesses and can be used to support learning and development. The Primary Programme progresses students seamlessly into middle years curricula, such as Cambridge Checkpoint and IGCSE.
- **External benchmark**
As an international programme, the Primary Programme provides teachers with an external benchmark to inform their teaching and easily measure students' progress over time. It also allows detailed, structured reporting to parents.
- **International curriculum**
Appropriate and relevant internationally, the Primary Programme has been designed to be culturally sensitive. It includes top-quality teaching and assessment resources appropriate for teaching and learning in local and international schools.
- **Flexibility**
The Primary Programme complements a range of teaching methods and curricula. No part of the programme is compulsory and Centres are at liberty to choose the parts that best suit their situation.

For more information on the Cambridge International Primary Programme please refer to the Primary Curriculum Framework.

Cambridge International Primary Programme – Submission of Entries

The procedures explained on pages 03 to 24 should be followed. Please note that entries for the Cambridge International Primary Programme should be submitted on a separate copy of the entry form to candidates entering for IGCSE, O Level and AS & A Level subjects.

Cambridge International Primary Programme Syllabuses in November 2011

Find below the key to all Cambridge International Primary Achievement Tests available in November 2011, in alphabetical order.

KEY TO CAMBRIDGE INTERNATIONAL PRIMARY PROGRAMME SYLLABUSES (in alphabetical order):

| SYLLABUS NAME AND CODE | COMPONENT INFORMATION | DURATION | OPTION CODE | NOTES |
|----------------------------|------------------------------|----------|-----------------------------------|--------------------------------------|
| ENGLISH 0841 | 1: CIPAT English Paper 1 | 1h | | Not available to private candidates. |
| | 2: CIPAT English Paper 2 | 1h | | |
| | | | Option Code Leave Blank | |
| MATHEMATICS 0842 | 1: CIPAT Mathematics Paper 1 | 45m | | Not available to private candidates. |
| | 2: CIPAT Mathematics Paper 2 | 45m | | |
| | 3: CIPAT Mental Mathematics | 15m | | |
| | | | Option Code Leave Blank | |
| SCIENCE 0843 | 1: CIPAT Science Paper 1 | 45m | | Not available to private candidates. |
| | 2: CIPAT Science Paper 2 | 45m | | |
| | | | Option Code Leave Blank | |

CHECKPOINT

A unique service and an invaluable tool for schools and colleges, Checkpoint enables access to standardised tests that provide feedback on a student's strengths and weaknesses in key curriculum areas. Feedback of this kind is an invaluable source of information. Schools and colleges will be able to make strategic decisions, drawing upon a pool of information and specialist reporting tools built into Checkpoint. Students at international schools will have a transferable indication of their academic progress. Rapid turnaround of feedback, within four weeks of receipt of the scripts, will ensure that the information returned can be put to immediate use.

Cambridge Checkpoint tests are available in English, Mathematics and Science and are offered in May and October. The service is aimed at students of approximately 14 years of age studying mid-secondary curriculum. The tests cover all major areas of learning required in the first years of an international secondary education. It is these topics and sub-topics that provide the framework for feedback on each student.

Feedback comes in four forms: reports on each Candidate, on each Teaching Group (if applicable), on the Centre, and (at the end of the series) on the entire cohort. When making entries, candidates should be entered under separate Teaching Groups if you wish to receive reports on these groups. The information on English language background is needed for the end-of series report on all Centres.

For more information on the Checkpoint syllabuses please refer to each of the curriculum frameworks.

Checkpoint – Submission of Entries

The procedures explained on pages 03 to 24 should be followed. Please note that a separate version of the electronic entry form should be used for Checkpoint entries, which can be downloaded from CIE Direct in the usual manner. This entry form contains the following additional columns, which request additional information required for Checkpoint entries:

Native Language English: As stated above, information on whether each candidate is a native speaker of English is needed for the end-of-series report on Checkpoint centres. You should indicate this on the form by selecting 'Y' for yes or 'N' for no as appropriate for each candidate.

Teaching Group: You should enter a Teaching Group Code for each candidate in this column, which should be used to indicate which classes your candidates are taught in. Each teaching group code will be made up of the first letter of the subject name, followed by a group number. For example, if your candidates for 1111 English are taught in two separate groups, you should enter 'E1' as the teaching group code for all candidates in the first group, and 'E2' for all candidates in the second group. (Similarly, Maths groups would use codes 'M1' and 'M2', while Science would use 'S1' and 'S2'.)

Candidate Initial: Please provide the initial letters of each candidate's name. (e.g. For candidate JOHN SMITH, you should enter 'JS'.) The candidate's full name should still be provided in the 'Candidate Name' section.

If the Checkpoint Entry Form is not available on CIE Direct, please contact Customer Services.

Checkpoint – Submission of Teaching Group Titles

Teaching Group Titles are submitted on form CP/E.2; an electronic copy of this form can be found on CIE Direct under 'Support Materials'.

Against each Teaching Group Code for which you have entered candidates, write the Teaching Group Title as you wish it to appear on the Checkpoint Performance Feedback documentation.

Once the form has been filled in, electronic forms should be sent to Cambridge by uploading the form onto CIE Direct. Alternatively hardcopies of form CP/E.2 may be faxed to Cambridge.

Checkpoint Syllabuses in October 2011

Find below the key to all Checkpoint syllabuses available in October 2011, in alphabetical order.

KEY TO CHECKPOINT SYLLABUSES (in alphabetical order):

| SYLLABUS NAME AND CODE | COMPONENT INFORMATION | DURATION | OPTION CODE | NOTES |
|----------------------------|--------------------------------------------------------|----------------|----------------------------|-------------------------------------------------------------------------|
| ENGLISH 1111 | 1: Paper 1 2: Paper 2 | 1h07m 1h07m | | Not available to private candidates. Both components are compulsory. |
| | | | Option Code Leave Blank | |
| MATHEMATICS 1112 | 1: Paper 1 (Non-calculator) 2: Paper 2 (Calculator) | 1h 1h | | Not available to private candidates. Both components are compulsory. |
| | | | Option Code Leave Blank | |
| SCIENCE 1113 | 1: Paper 1 2: Paper 2 | 45m 45m | | Not available to private candidates. Both components are compulsory. |
| | | | Option Code Leave Blank | |

INTERNATIONAL GENERAL CERTIFICATE OF SECONDARY EDUCATION (IGCSE)

The International General Certificate of Secondary Education (IGCSE) is a curriculum and assessment system, suitable for schools and colleges around the world. The IGCSE programme from Cambridge brings out the best in students and develops successful learners through a skills-based approach to teaching and assessing. Students who attain IGCSE qualifications are well educated, adaptable and thoroughly prepared for their next steps in education and employment, including progression to AS and A Level study

IGCSE provides a broad study programme by drawing subjects from five areas: Languages, Humanities, Social Sciences, Mathematics, Creative, Technical and Vocational. Within the curriculum there is a balanced mix of practical experience and theoretical knowledge. Cambridge provides a choice of core and extended papers in most subjects. The extended level is designed to stretch the most capable students.

The IGCSE is an internally based curriculum allowing teaching to be placed in a localised context, making it relevant in different regions. It is also suitable for students whose first language may not be English and this is acknowledged throughout the examination progress. IGCSEs are internationally recognised by schools, universities and employers as equivalent in standard to the British GCSE and International O Level examinations.

General Coursework (School-based assessment)

Coursework refers to any component specified by a syllabus that is assessed in the Centre by the Centre's teachers or other local teachers and moderated by Cambridge. Examples of such Coursework are:

- projects
- folios of essays
- field work
- art and craft items
- design studies
- internally set and assessed Speaking Tests
- practical work assignments and experiments undertaken and assessed during the course.

Coursework may include work for which the theme, experiment or parameters of a project have been set by the teacher, or specified in the syllabus, or chosen by candidates themselves.

Centres requiring further information regarding Coursework and its regulations should refer to the Handbook for Centres: Part 4.

International Certificate of Education (ICE)

ICE is the Group Award that requires the study of subjects drawn from five different IGCSE subject groups. It gives schools the opportunity to benefit from offering a broad and balanced curriculum by recognizing the achievements of students who pass examinations in at least seven subjects, including two languages and one subject from each of the other subject groups.

For the procedures on how to enter candidates for the International Certificate of Education (ICE) please refer to page 50 of this booklet.

IGCSE – Submission of Entries

The procedures explained on pages 03 to 24 should be followed. Please note that all entries for IGCSE, O Level and AS & A Level qualifications must be submitted on the same entry form.

IGCSE Syllabuses in November 2011

Find below the key to all IGCSE syllabuses available in November 2011, in alphabetical order.

KEY TO IGCSE SYLLABUSES (in alphabetical order):

| SYLLABUS NAME AND CODE | COMPONENT INFORMATION | DURATION | WEIGHTING | OPTION CODE | NOTES | ACCESS TO GRADES |
|-----------------------------------------------|----------------------------------------------------------------------------------------------------------------------------------------------------------------------------------------------------|-------------------------------------------|-----------------------------------------------|------------------------------------------------------------|---------------------------------------------------------------------------------------------------------------------------------------------------------------------------------------|-------------------------------------------------|
| ACCOUNTING 0452 | 11: Paper 11 21: Paper 21 | 1h45m 1h45m | 50% 50% | | May not be taken in the same examination series as 7110. | All grades A* to G are available. |
| | | | | Option Code AX | Components 11, 21 | |
| ADDITIONAL MATHEMATICS 0606 | 11: Paper 11 21: Paper 21 | 2h 2h | 50% 50% | | May not be taken in the same examination series as 4037. | Grades A* to E are available. |
| | | | | Option Code AX | Components 11, 21 | |
| AFRIKAANS AS A SECOND LANGUAGE 0548 | 1: Reading and Writing 2: Listening 5: Oral | 2h 45m 15m | 70% 30% - | | May not be taken in the same examination series as 0512, 8679, 8779 or 9679. | All grades A* to G are available. |
| | | | | Option Code A B | Components 1, 2 1, 2, 5 | |
| AGRICULTURE 0600 | 1: Multiple Choice 2: Core Theory 3: Extended Theory 4: Practical 5: Project 84: Coursework (Practical) Mark Carried Forward 85: Coursework (Project) Mark Carried Forward | 45m 1h15m 1h15m - - - - | 25% 45% 45% 30% 30% 30% 30% | | Options A, B, E and F not available to private candidates. May not be taken in the same examination series as 5038. | Core: Grades C to G Extended: Grades A* to G |
| | | | | Option Code A B C D E F G H | Components 1, 3, 4 (Extended) 1, 3, 5 (Extended) 1, 3, 84 (Extended) 1, 3, 85 (Extended) 1, 2, 4 (Core) 1, 2, 5 (Core) 1, 2, 84 (Core) 1, 2, 85 (Core) | |

KEY TO IGCSE SYLLABUSES (in alphabetical order):

| SYLLABUS NAME AND CODE | COMPONENT INFORMATION | DURATION | WEIGHTING | OPTION CODE | NOTES | ACCESS TO GRADES |
|--------------------------------------|--------------------------------------------------------------------------------------------------------------------------------------------------------------------------------------------|------------------------------------------------|-----------------------------------------------|--------------------------------------------------------------------|---------------------------------------------------------------------------------------------------------------------------------------------------------------------------------------------------------|-------------------------------------------------|
| ART AND DESIGN 0400 | 1: Observational/Interpretative Assignment 2: Design Assignment 3: Critical and Historical Assignment 4: Coursework Assignment | 8hrs 8hrs - - | 50% 50% 50% 50% | | Options C and E are not available to private candidates. May not be taken in the same examination series as 6010. | All grades A* to G are available. |
| | | | | Option Code A B C D E | Components 1, 2 1, 3 1, 4 2, 3 2, 4 | |
| BIOLOGY 0610 | 11: Multiple Choice 11 21: Core Theory 21 31: Extended Theory 31 4: Coursework 51: Practical Test 51 61: Alternative to Practical 61 84: Coursework Mark Carried Forward | 45m 1h15m 1h15m - 1h15m 1h - | 30% 50% 50% 20% 20% 20% 20% | | Options AX and EX not available to private candidates. May not be taken in the same examination series as 0653, 0654, 5090, 5096 or 5129. | Core: Grades C to G Extended: Grades A* to G |
| | | | | Option Code AX BX CX DX EX FX GX HX | Components 11, 31, 4 (Extended) 11, 31, 51 (Extended) 11, 31, 61 (Extended) 11, 31, 84 (Extended) 11, 21, 4 (Core) 11, 21, 51 (Core) 11, 21, 61 (Core) 11, 21, 84 (Core) | |

KEY TO IGCSE SYLLABUSES (in alphabetical order):

| SYLLABUS NAME AND CODE | COMPONENT INFORMATION | DURATION | WEIGHTING | OPTION CODE | NOTES | ACCESS TO GRADES |
|-----------------------------------------------------------|---------------------------------------------------------------------------------------------------------------------------------------------------------------------------------------|------------------------------------------------|----------------------------------------------------------------------------|-----------------------------------------------------------------------------------------------------------------------------------|-------------------------------------------------|--------------------------------------------------------------------------------------------------------------------------------------------------------------------------------------------------|
| BUSINESS STUDIES 0450 | 11: Short Answer/Structured Response 11 21: Case Study 21 3: Coursework 83: Coursework Mark Carried Forward | 1h45m 1h45m - - | 50% Without CW / 40% With CW 50% Without CW / 40% With CW 20% 20% | Option BX not available to private candidates. May not be taken in the same examination series as 7115. | All grades A* to G are available. | |
| | | | | Option Code AX BX CX | | Components 11, 21 11, 21, 3 11, 21, 83 |
| CAMBRIDGE INTERNATIONAL MATHEMATICS 0607 | 1: Paper 1 (Core) 2: Paper 2 (Extended) 3: Paper 3 (Core) 4: Paper 4 (Extended) 5: Paper 5 (Core) 6: Paper 6 (Extended) | 45m 45m 1h45m 2h15m 1h 1h30m | 25% 20% 60% 60% 15% 20% | May not be taken in the same examination series as 0580, 0581 or 4024. | Core: Grades C to G Extended: Grades A* to E | |
| | | | | Option Code A B | | Components 1, 3, 5 (Core) 2, 4, 6 (Extended) |
| CHEMISTRY 0620 | 11: Multiple Choice 11 21: Core Theory 21 31: Extended Theory 31 4: Coursework 51: Practical 51 61: Alternative to Practical 61 84: Coursework Mark Carried Forward | 45m 1h15m 1h15m - 1h15m 1h - | 30% 50% 50% 20% 20% 20% 20% | Options AX and EX not available to private candidates. May not be taken in the same examination series as 0653, 0654, or 5070. | Core: Grades C to G Extended: Grades A* to G | |
| | | | | Option Code AX BX CX DX EX FX GX HX | | Components 11, 31, 4 (Extended) 11, 31, 51 (Extended) 11, 31, 61 (Extended) 11, 31, 84 (Extended) 11, 21, 4 (Core) 11, 21, 51 (Core) 11, 21, 61 (Core) 11, 21, 84 (Core) |

KEY TO IGCSE SYLLABUSES (in alphabetical order):

| SYLLABUS NAME AND CODE | COMPONENT INFORMATION | DURATION | WEIGHTING | OPTION CODE | NOTES | ACCESS TO GRADES |
|-----------------------------------------|---------------------------------------------------------------|----------|---------------------------------------------------------------|----------------------------------|-------------------------------------------------------------------------------------------------------------------------------------------------------------------------------------------------------------------------------------------------------------------------------------------------------------------------------------------------------------------------------------------------------------------------|-------------------------------------------------|
| CHILD DEVELOPMENT 0637 | 1: Theory Paper | 2h | 50% | | Not available to private candidates. Components 1, 2, 3 1, 2, 83 1, 3, 82 1, 82, 83 | All grades A* to G are available. |
| | 2: Coursework (Child Study) | - | 25% | | | |
| | 3: Coursework (Practical Investigation) | - | 25% | | | |
| | 82: Coursework (Child Study) Mark Carried Forward | - | 25% | Option Code A | | |
| | 83: Coursework (Practical Investigation) Mark Carried Forward | - | 25% | B C D | | |
| COMBINED SCIENCE 0653 | 11: Multiple Choice 11 | 45m | 30% | | Options AX and EX not available to private candidates. May not be taken in the same examination series as 0608, 0610, 0620, 0625, 0652, 0654, 5054, 5070, 5090, 5096, 5124, 5125, 5126, 5129 or 5130. Components 11, 31, 4 (Extended) 11, 31, 51 (Extended) 11, 31, 61 (Extended) 11, 31, 84 (Extended) 11, 21, 4 (Core) 11, 21, 51 (Core) 11, 21, 61 (Core) 11, 21, 84 (Core) | Core: Grades C to G Extended: Grades A* to G |
| | 21: Core Theory 21 | 1h15m | 50% | | | |
| | 31: Extended Theory 31 | 1h15m | 50% | | | |
| | 4: Coursework | - | 20% | | | |
| | 51: Practical Test 51 | 1h30m | 20% | | | |
| | 61: Alternative to Practical 61 | 1h | 20% | | | |
| | 84: Coursework Mark Carried Forward | - | 20% | | | |
| | | | | Option Code AX | | |
| | | | | BX | | |
| | | | | CX | | |
| | | | DX EX FX GX HX | | | |
| COMPUTER STUDIES 0420 | 11: Paper 11 | 2h30m | 75% | | Option AX not available to private candidates. May not be taken in the same examination series as 0417 or 7010. Components 11, 2 11, 82 11, 31 | All grades A* to G are available. |
| | 2: Coursework (Project) | - | 25% | | | |
| | 31: Alternative to Coursework 31 | 1h30m | 25% | | | |
| | 82: Coursework (Project) Mark Carried Forward | - | 25% | Option Code AX | | |
| | | | | BX CX | | |

KEY TO IGCSE SYLLABUSES (in alphabetical order):

| SYLLABUS NAME AND CODE | COMPONENT INFORMATION | DURATION | WEIGHTING | OPTION CODE | NOTES | ACCESS TO GRADES |
|--------------------------------------------------|--------------------------------------------------|------------|-----------|---------------------------------------------------------------------------------------------------------------------------------------------------------------------------------------------------------|----------------------------------------------------------------------------------------------------------------------------------------------------------------------------------------------------------|------------------------------------------------------|
| CO-ORDINATED SCIENCES (DOUBLE AWARD) 0654 | 11: Multiple Choice 11 | 45m | 30% | | Options AX and EX not available to private candidates. May not be taken in the same examination series as 0608, 0610, 0620, 0625, 0652, 0653, 5054, 5070, 5090, 5096, 5124, 5125, 5126, 5129 or 5130. | Core: Grades CC to GG Extended: Grades A*A* to GG |
| | 21: Core Theory 21 | 2h | 50% | | | |
| | 31: Extended Theory 31 | 2h | 50% | | | |
| | 4: Coursework | - | 20% | | | |
| | 51: Practical 51 | 2h | 20% | | | |
| | 61: Alternative to Practical 61 | 1h | 20% | | | |
| | 84: Coursework Mark Carried Forward | - | 20% | | | |
| | | | | Option Code | | |
| | | | | AX BX CX DX EX FX GX HX | | |
| | | | | Components 11, 31, 4 (Extended) 11, 31, 51 (Extended) 11, 31, 61 (Extended) 11, 31, 84 (Extended) 11, 21, 4 (Core) 11, 21, 51 (Core) 11, 21, 61 (Core) 11, 21, 84 (Core) | | |
| DESIGN AND TECHNOLOGY 0445 | 11: Design 11 | 1h15m | 25% | | Not available to private candidates. May not be taken in the same examination series as 6043. | All grades A* to G are available. |
| | 21: Graphic Products 21 | 1h | 25% | | | |
| | 31: Resistant Materials 31 | 1h | 25% | | | |
| | 41: Systems and Control 41 | 1h | 25% | | | |
| | 5: School Based Assessment | - | 50% | | | |
| | 86: School Based Assessment Mark Carried Forward | - | 50% | | | |
| | | | | Option Code | | |
| | | | | AX CX EX GX HX IX | | |
| | | | | Components 11, 21, 5 11, 31, 5 11, 41, 5 11, 21, 86 11, 31, 86 11, 41, 86 | | |
| | DEVELOPMENT STUDIES 0453 | 1: Paper 1 | 2h | 50% | | |
| 2: Paper 2 | | 2h | 50% | | | |
| | | | | Option Code | | |
| | | | | Leave Blank 1, 2 Components | | |

KEY TO IGCSE SYLLABUSES (in alphabetical order):

| SYLLABUS NAME AND CODE | COMPONENT INFORMATION | DURATION | WEIGHTING | OPTION CODE | NOTES | ACCESS TO GRADES | |
|-------------------------------------------------------------------------------------------|-------------------------------------------------------------|----------|-----------|-----------------------|----------------------------------------------------------------------------------------------------------------------------------------|-------------------------------------------------|-------------------|
| DRAMA 0411 | 2: Coursework | - | 60% | | Not available to private candidates. Option UX should only be entered if candidates have entered option TX in the June 2011 series. | All grades A* to G are available. | |
| | 81: Paper 11 Mark Carried Forward | - | 40% | | | | |
| | | | | Option Code | Components | | |
| | | | | UX | 2, 81 | | |
| ECONOMICS 0455 | 11: Multiple Choice 11 | 45m | 20% | | May not be taken in the same examination series as 2281. | All grades A* to G are available. | |
| | 21: Structured Questions 21 | 2h | 50% | | | | |
| | 31: Analysis and Critical Evaluation 31 | 1h30m | 30% | | | | |
| | | | | Option Code | Components | | |
| | | | | AX | 11, 21, 31 | | |
| ENGLISH AS A SECOND LANGUAGE (Count-in Oral) 0511 | 11: Reading and Writing 11 (Core) | 1h30m | 70% | | Options BX and FX not available to private candidates. May not be taken in the same examination series as 0500, 0510 or 1123. | Core: Grades C to G Extended: Grades A* to E | |
| | 21: Reading and Writing 21 (Extended) | 2h | 70% | | | | |
| | 31: Listening 31 (Core) | 40m | 15% | | | | |
| | 41: Listening 41 (Extended) | 45m | 15% | | | | |
| | 5: Oral Communication | 15m | 15% | | | | |
| | 6: Oral Communication (Coursework) | - | 15% | | | | |
| | 85: Oral Communication Mark Carried Forward 85 | - | 15% | | | | |
| | 86: Oral Communication (Coursework) Mark Carried Forward 86 | - | 15% | | | | |
| | | | | Option Code | | | Components |
| | | | | AX | | | 11, 31, 5 (Core) |
| | | | | BX | | | 11, 31, 6 (Core) |
| | | | CX | 11, 31, 85 (Core) | | | |
| | | | DX | 11, 31, 86 (Core) | | | |
| | | | EX | 21, 41, 5 (Extended) | | | |
| | | | FX | 21, 41, 6 (Extended) | | | |
| | | | GX | 21, 41, 85 (Extended) | | | |
| | | | HX | 21, 41, 86 (Extended) | | | |

KEY TO IGCSE SYLLABUSES (in alphabetical order):

| SYLLABUS NAME AND CODE | COMPONENT INFORMATION | DURATION | WEIGHTING | OPTION CODE | NOTES | ACCESS TO GRADES |
|-------------------------------------------------------------|----------------------------------------------------------|----------|------------|------------------------------------|-----------------------------------------------------------------------------------------------------------------------------------------------------------------------------------------------------------------------------------------------------------------------------------------------------------------------------------------------|-------------------------------------------------|
| ENGLISH AS A SECOND LANGUAGE (Oral Endorsement) 0510 | 11: Reading and Writing (Core) 11 | 1h30m | 70% | | Options BX and FX not available to private candidates. May not be taken in the same examination series as 0500, 0511 or 1123. Components 11, 31, 5 (Core) 11, 31, 6 (Core) 11, 31, 85 (Core) 11, 31, 86 (Core) 21, 41, 5 (Extended) 21, 41, 6 (Extended) 21, 41, 85 (Extended) 21, 41, 86 (Extended) | Core: Grades C to G Extended: Grades A* to E |
| | 21: Reading and Writing (Extended) 21 | 2h | 70% | Option Code | | |
| | 31: Listening (Core) 31 | 40m | 30% | AX | | |
| | 41: Listening (Extended) 41 | 45m | 30% | BX | | |
| | 5: Oral Communication | 15m | - | CX | | |
| | 6: Oral Communication (Coursework) | - | - | DX | | |
| | 85: Oral Communication Mark Carried Forward | - | - | EX | | |
| | 86: Oral Communication (Coursework) Mark Carried Forward | - | - | FX | | |
| | | | | GX | | |
| | | | | HX | | |
| ENTERPRISE 0454 | 1: Case Study | 1h30m | 50% | | Not available to private candidates. | All grades A* to G are available. |
| | 2: Coursework | - | 50% | Option Code | | |
| | 82: Coursework Mark Carried Forward | - | 50% | A | | |
| | | | | B | | |
| | | | | Components 1, 2 1, 82 | | |
| ENVIRONMENTAL MANAGEMENT 0680 | 11: Paper 11 | 1h30m | 30% | | Options AX and CX not available to private candidates. May not be taken in the same examination series as 5014. Components 11, 21, 3 11, 21, 41 11, 21, 83 | All grades A* to G are available. |
| | 21: Paper 21 | 1h45m | 40% | Option Code | | |
| | 3: Coursework | - | 30% | AX | | |
| | 41: Alternative To Coursework | 1h30m | 30% | BX | | |
| | 83: Coursework Mark Carried Forward | - | 30% | CX | | |
| | | | | Components | | |
| | | | | 11, 21, 3 | | |
| | | | | 11, 21, 41 | | |
| | | | 11, 21, 83 | | | |

KEY TO IGCSE SYLLABUSES (in alphabetical order):

| SYLLABUS NAME AND CODE | COMPONENT INFORMATION | DURATION | WEIGHTING | OPTION CODE | NOTES | ACCESS TO GRADES |
|----------------------------------------------------------|----------------------------------------------------|----------|-----------|----------------------------|-----------------------------------------------------------------------------------------------------------------------------------------------------------------------------------|-------------------------------------------------|
| FIRST LANGUAGE AFRIKAANS 0512 | 2: Reading and Directed Writing | 2h30m | 70% | | May not be taken in the same examination series as 0548, 8679, 8779 or 9679. | All grades A* to G are available. |
| | 3: Continuous Writing | 1h30m | 30% | Option Code Leave Blank | | |
| FIRST LANGUAGE ARABIC 0508 | 1: Reading | 2h | 50% | | May not be taken in the same examination series as 0544. | All grades A* to G are available. |
| | 2: Writing | 2h | 50% | Option Code Leave Blank | | |
| FIRST LANGUAGE ENGLISH 0500 (Continued) | 11: Reading Passage (Core) 11 | 1h45m | 50% | | Options AS, AT, BR, BS, BT, CS, CT, DR, DS, DT, ES, ET, FS and FT are not available to private candidates. May not be taken in the same examination series as 0510, 0511 or 1123. | Core: Grades C to G Extended: Grades A* to E |
| | 21: Reading Passages (Extended) 21 | 2h | 50% | AR | | |
| | 31: Directed Writing & Composition 31 | 2h | 50% | AS | | |
| | 4: Coursework Portfolio 04 | - | 50% | AT | | |
| | 5: Speaking & Listening 05 | 12m | - | BR | | |
| | 6: Speaking & Listening (Coursework) 06 | - | - | BS | | |
| | 84: Coursework Portfolio (Mark Carried Forward) 84 | - | 50% | BT | | |
| | | | | CR | | |
| | | | | CS | | |
| | | | | CT | | |
| | | | | DR | | |
| | | | | DS | | |
| | | | | DT | | |

KEY TO IGCSE SYLLABUSES (in alphabetical order):

| SYLLABUS NAME AND CODE | COMPONENT INFORMATION | DURATION | WEIGHTING | OPTION CODE | NOTES | ACCESS TO GRADES |
|------------------------------------------------|-----------------------------------------------------------------------------------------------------------------------------------------------------------------------------------------------------|------------------------------------|--------------------------------------|-------------------------------------------------------------------------------|---------------------------------------------------------------------------------------------------------------------------------------------------------------------------------------------------------------------------------------------------------------------------------------------------------------------------------------------------------------------------------------------------|-------------------------------------------------|
| FIRST LANGUAGE ENGLISH 0500 (Continued) | | | | ER ES ET FR FS FT | 11, 84 (Core) 11, 5, 84 (Core) 11, 6, 84 (Core) 21, 84 (Extended) 21, 5, 84 (Extended) 21, 6, 84 (Extended) | |
| FIRST LANGUAGE KOREAN 0521 | 1: Reading 2: Writing | 2h 2h | 50% 50% | Option Code Leave Blank | Components 1, 2 | All grades A* to G are available. |
| FIRST LANGUAGE SPANISH 0502 | 1: Reading Passage (Core) 2: Reading Passages (Extended) 3: Directed Writing & Composition 4: Coursework Portfolio 5: Speaking/Listening 84: Coursework Portfolio Carried Forward | 1h45m 2h 2h - 12m - | 50% 50% 50% 50% - 50% | Option Code A AO B BO C CO D DO Y YO Z ZO | Options AO, B, BO, CO, D, DO, YO, ZO are not available to private candidates. May not be taken in the same examination series as 0530 or 3035. Components 1, 3 (Core) 1, 3, 5 (Core) 1, 4 (Core) 1, 4, 5 (Core) 2, 3 (Extended) 2, 3, 5 (Extended) 2, 4 (Extended) 2, 4, 5 (Extended) 1, 84 (Core) 1, 5, 84 (Core) 2, 84 (Extended) 2, 5, 84 (Extended) | Core: Grades C to G Extended: Grades A* to E |

KEY TO IGCSE SYLLABUSES (in alphabetical order):

| SYLLABUS NAME AND CODE | COMPONENT INFORMATION | DURATION | WEIGHTING | OPTION CODE | NOTES | ACCESS TO GRADES |
|-------------------------------------------|-------------------------------------|----------|-------------------------|--------------------------------------------------|------------------------------------------------------------------------------------------------------------------------------------------------------------------------|-----------------------------------|
| FOOD AND NUTRITION 0648 | 1: Theory | 2h | 50% | | Not available to private candidates. May not be taken in the same examination series as 6065. The Practical component is preceded by a planning period of 1h30m. | All grades A* to G are available. |
| | 2: Practical | 2h30m | 50% | | | |
| | | | | Option Code | Components | |
| | | | | Leave Blank | 1, 2 | |
| FRENCH 0520 | 11: Listening 11 | 45m | 25% Extended / 33% Core | | Core: Grades C to G Extended: Grades A* to G | |
| | 21: Reading and Directed Writing 21 | 1h30m | 25% Extended / 33% Core | | | |
| | 3: Speaking | 15m | 25% Extended / 33% Core | | | |
| | 41: Continuous Writing 41 | 1h15m | 25% Extended | Option Code | | |
| | 83: Speaking Mark Carried Forward | - | 25% Ext / 33% Core | AX BX DX GX | | |
| | | | | Option Code | Components | |
| | | | | AX | 11, 21, 3 (Core) | |
| | | | | BX | 11, 21, 3, 41 (Extended) | |
| | | | | DX | 11, 21, 41, 83 (Extended) | |
| | | | | GX | 11, 21, 83 (Core) | |
| GEOGRAPHY 0460 | 11: Paper 11 | 1h45m | 45% | | Option AX not available to private candidates. May not be taken in the same examination series as 2217. | All grades A* to G are available. |
| | 21: Paper 21 | 1h30m | 27.5% | | | |
| | 3: Coursework | - | 27.5% | | | |
| | 41: Alternative to Coursework | 1h30m | 27.5% | | | |
| | 83: Coursework Mark Carried Forward | - | 27.5% | | | |
| | | | | Option Code | Components | |
| | | | | AX | 11, 21, 3 | |
| | | | | BX | 11, 21, 41 | |
| | | | | CX | 11, 21, 83 | |
| GLOBAL PERSPECTIVES 0457 | 1: Portfolio | - | 50% | | Not available to private candidates. | All grades A* to G are available. |
| | 2: Project | - | 20% | | | |
| | 3: Written Paper | 2h | 30% | | | |
| | | | | Option Code | Components | |
| | | | | Leave Blank | 1, 2, 3 | |

KEY TO IGCSE SYLLABUSES (in alphabetical order):

| SYLLABUS NAME AND CODE | COMPONENT INFORMATION | DURATION | WEIGHTING | OPTION CODE | NOTES | ACCESS TO GRADES |
|------------------------------------------------------------------|-------------------------------------|----------|-------------------------|--------------------|------------------------------------------------------------------------------------------------------------|-----------------------------------|
| HISTORY 0470 | 11: Paper 11 | 2h | 40% | | Option AX not available to private candidates. May not be taken in the same examination series as 2158. | All grades A* to G are available. |
| | 21: Paper 21 | 2h | 33% | | | |
| | 3: Coursework | - | 27% | | | |
| | 41: Alternative to Coursework 41 | 1h | 27% | | | |
| | 83: Coursework Mark Carried Forward | - | 27% | | | |
| | | | | Option Code | Components | |
| | | | | AX | 11, 21, 3 | |
| | | | | BX | 11, 21, 41 | |
| | | | | CX | 11, 21, 83 | |
| INDONESIAN 0545 | 2: Reading and Directed Writing | 1h30m | 35% Extended / 54% Core | | Core: Grades C to G Extended: Grades A* to G | |
| | 3: Speaking | 15m | 30% Extended / 46% Core | | | |
| | 4: Continuous Writing | 1h15m | 35% Extended | | | |
| | | | | Option Code | Components | |
| | | | | A | 2, 3 (Core) | |
| | | | | B | 2, 3, 4 (Extended) | |
| INFORMATION & COMMUNICATION TECHNOLOGY 0417 | 11: Written Paper 11 | 2h | 40% | | May not be taken in the same examination series as 0420 or 7010. | All grades A* to G are available. |
| | 2: Practical Test A | 2h30m | 30% | | | |
| | 3: Practical Test B | 2h30m | 30% | | | |
| | | | | Option Code | Components | |
| | | | | AX | 11, 2, 3 | |
| ISIZULU AS A SECOND LANGUAGE 0531 | 1: Reading and Writing | 2h | 70% | | All grades A* to G are available. | |
| | 2: Listening | 45m | 30% | | | |
| | 5: Oral | 15m | - | | | |
| | | | | Option Code | Components | |
| | | | | A | 1, 2 | |
| | | | | B | 1, 2, 5 | |
| JAPANESE 0519 | 2: Reading and Directed Writing | 1h30m | 35% Extended / 54% Core | | Core: Grades C to G Extended: Grades A* to G | |
| | 3: Speaking | 10m | 30% Extended / 46% Core | | | |
| | 4: Continuous Writing | 1h15m | 35% Extended | | | |
| | | | | Option Code | Components | |
| | | | | A | 2, 3 (Core) | |
| | | | | B | 2, 3, 4 (Extended) | |

KEY TO IGCSE SYLLABUSES (in alphabetical order):

| SYLLABUS NAME AND CODE | COMPONENT INFORMATION | DURATION | WEIGHTING | OPTION CODE | NOTES | ACCESS TO GRADES |
|-------------------------------------------|----------------------------------------------------------------------------------------------------------------------------------------------------------------------------------------------------------------------------------------------|------------------------------------------------|------------------------------------------------------|-------------------------------------------------------------------------------------------------------------|----------------------------------------------------------------------------------------------------------------|-------------------------------------------------|
| LITERATURE (ENGLISH) 0486 | 11: Set Texts: Open Books 11 2: Coursework Portfolio 31: Unseen 31 41: Set Texts: Closed Books A 41 51: Set Texts: Closed Books B 51 82: June Coursework Mark Carried Forward 92: November Coursework Mark Carried Forward | 2h15m - 1h15m 2h15m 45m - - | 75% 25% 25% 75% 25% 25% 25% | Option Code AX BX CX DX EX | Option AX not available to private candidates. May not be taken in the same examination series as 2010. | All grades A* to G are available. |
| | | | | Components 11, 2 11, 31 11, 82 41, 51 11, 92 | | |
| LITERATURE (SPANISH) 0488 | 1: Set Texts (Open Books) 2: Coursework 3: Alternative to Coursework 82: Coursework Mark Carried Forward | 2h15m - 1h20m - | 70% 30% 30% 30% | Option Code A B C | Option A not available to private candidates. | All grades A* to G are available. |
| | | | | Components 1, 2 1, 3 1, 82 | | |
| MATHEMATICS (With Coursework) 0581 | 11: Paper 11 (Core) 21: Paper 21 (Extended) 31: Paper 31 (Core) 41: Paper 41 (Extended) 5: Coursework (Core) 6: Coursework (Extended) 85: Core Coursework Mark C/F 86: Extended Coursework Mark C/F | 1h 1h30m 2h 2h30m - - - - | 30% 30% 50% 50% 20% 20% 20% 20% | Option Code AX BX CX DX | Not available to private candidates. May not be taken in the same examination series as 0580, 0607 or 4024. | Core: Grades C to G Extended: Grades A* to E |
| | | | | Components 11, 31, 5 (Core) 11, 31, 85 (Core) 21, 41, 6 (Extended) 21, 41, 86 (Extended) | | |

KEY TO IGCSE SYLLABUSES (in alphabetical order):

| SYLLABUS NAME AND CODE | COMPONENT INFORMATION | DURATION | WEIGHTING | OPTION CODE | NOTES | ACCESS TO GRADES |
|-----------------------------------------------------------|-------------------------------------|----------|-----------|--------------------------------------------|----------------------------------------------------------------------------------------------------------------------------------------------------------------------------|-------------------------------------------------|
| MATHEMATICS (Without Coursework) 0580 | 11: Paper 11 (Core) | 1h | 35% | | May not be taken in the same examination series as 0581, 0607 or 4024. | Core: Grades C to G Extended: Grades A* to E |
| | 21: Paper 21 (Extended) | 1h30m | 35% | | | |
| | 31: Paper 31 (Core) | 2h | 65% | | Components 11, 31 (Core) 21, 41 (Extended) | |
| | 41: Paper 41 (Extended) | 2h30m | 65% | Option Code AX BX | | |
| MUSIC 0410 | 2: Performing | - | 30% | | Not available to private candidates. Option TB should only be entered if candidates have entered option TA in the June 2011 series. | All grades A* to G are available. |
| | 3: Composing | - | 30% | | | |
| | 81: Paper 1 Mark Carried Forward | - | 40% | | | |
| | | | | Option Code TB | Components 2, 3, 81 | |
| PHYSICAL EDUCATION 0413 | 11: Paper 11 | 1h45m | 40% | | Not available to private candidates. | All grades A* to G are available. |
| | 2: Coursework (c/w) | - | 60% | | | |
| | 82: Coursework Mark Carried Forward | - | 60% | | Components 11, 2 11, 82 | |
| | | | | Option Code AX BX | | |
| PHYSICAL SCIENCE 0652 | 11: Multiple Choice 11 | 45m | 30% | | Options AX and EX not available to private candidates. May not be taken in the same examination series as 0608, 0620, 0625, 0653, 0654, 5054, 5070, 5124, 5129 or 5130. | Core: Grades C to G Extended: Grades A* to G |
| | 21: Core Theory 21 | 1h15m | 50% | | | |
| | 31: Extended Theory 31 | 1h15m | 50% | | Components 11, 31, 4 (Extended) 11, 31, 51 (Extended) 11, 31, 61 (Extended) 11, 31, 84 (Extended) | |
| | 4: Coursework | - | 20% | | | |
| | 51: Practical Test 51 | 1h30m | 20% | | | |
| | 61: Alternative to Practical 61 | 1h | 20% | | | |
| | 84: Coursework Mark Carried Forward | - | 20% | | | |
| (Continued) | | | | Option Code AX BX CX DX | | |

KEY TO IGCSE SYLLABUSES (in alphabetical order):

| SYLLABUS NAME AND CODE | COMPONENT INFORMATION | DURATION | WEIGHTING | OPTION CODE | NOTES | ACCESS TO GRADES |
|------------------------------------------------|-------------------------------------|----------|-----------|--------------------|----------------------------------------------------------------------------------------------------------------------------------------|-------------------------------------------------|
| PHYSICAL SCIENCE 0652 (Continued) | | | | EX | 11, 21, 4 (Core) | |
| | | | | FX | 11, 21, 51 (Core) | |
| | | | | GX | 11, 21, 61 (Core) | |
| | | | | HX | 11, 21, 84 (Core) | |
| PHYSICS 0625 | 11: Multiple Choice 11 | 45m | 30% | | Options AX and EX not available to private candidates. May not be taken in the same examination series as 0653, 0654, 5054 or 5129. | Core: Grades C to G Extended: Grades A* to G |
| | 21: Core Theory 21 | 1h15m | 50% | | | |
| | 31: Extended Theory 31 | 1h15m | 50% | | | |
| | 4: Coursework | - | 20% | | | |
| | 51: Practical 51 | 1h15m | 20% | | | |
| | 61: Alternative to Practical 61 | 1h | 20% | | | |
| | 84: Coursework Mark Carried Forward | - | 20% | | | |
| | | | | Option Code | | |
| | | | | AX | | |
| | | | | BX | | |
| | | | CX | | | |
| | | | DX | | | |
| | | | EX | | | |
| | | | FX | | | |
| | | | GX | | | |
| | | | HX | | | |
| RELIGIOUS STUDIES 0490 | 11: Paper 11 | 1h45m | 50% | | May not be taken in the same examination series as 2048. | All grades A* to G are available. |
| | 21: Paper 21 | 1h45m | 50% | | | |
| | | | | Option Code | | |
| | | | | AX | | |
| SOCIOLOGY 0495 | 11: Paper 11 | 2h30m | 60% | | May not be taken in the same examination series as 2251. | All grades A* to G are available. |
| | 21: Paper 21 | 1h45m | 40% | | | |
| | | | | Option Code | | |
| | | | | AX | | |

KEY TO IGCSE SYLLABUSES (in alphabetical order):

| SYLLABUS NAME AND CODE | COMPONENT INFORMATION | DURATION | WEIGHTING | OPTION CODE | NOTES | ACCESS TO GRADES |
|----------------------------------------------------|--------------------------------------------------------------------|----------|-------------------------|--------------------------------------------------------------------|---------------------------------------------------------------------------------------------------------------------------------------------------------------------------------------------------------------------------------------------------------------|-------------------------------------------------|
| SPANISH 0530 | 11: Listening 11 | 45m | 25% Extended / 33% Core | | May not be taken in the same examination series as 0502 or 3035. Components 11, 21, 3 (Core) 11, 21, 3, 41 (Extended) 11, 21, 41, 83 (Extended) 11, 21, 83 (Core) | Core: Grades C to G Extended: Grades A* to G |
| | 21: Reading and Directed Writing 21 | 1h30m | 25% Extended / 33% Core | | | |
| | 3: Speaking | 15m | 25% Extended / 33% Core | | | |
| | 41: Continuous Writing 41 | 1h15m | 25% Extended | Option Code | | |
| | 83: Speaking Mark Carried Forward | - | 25% Ext / 33% Core | AX BX DX GX | | |
| TRAVEL AND TOURISM 0471 | 1: Written Paper | 2h | 60% | | Option B not available to private candidates. May not be taken in the same examination series as 7096. Components 1, 2 1, 3 1, 83 | All grades A* to G are available. |
| | 2: Alternative to Coursework | 2h30m | 40% | | | |
| | 3: Coursework | - | 40% | | | |
| | 83: Coursework Mark Carried Forward | - | 40% | | | |
| | | | | Option Code A B C | | |
| TWENTY FIRST CENTURY SCIENCE 0608 | 1: Core Multiple Choice | 1h | 20% | | Not available to private candidates. May not be taken in the same examination series as 0653, 0654, 5054, 5070, 5090, 5096 or 5129. Components 1, 3, 5, 6 (Core) 2, 4, 5, 6 (Extended) 1, 3, 5, 86 (Core) 2, 4, 5, 86 (Extended) | Core: Grades C to G Extended: Grades A* to G |
| | 2: Extended Multiple Choice | 1h | 20% | | | |
| | 3: Core Written | 1h30m | 40% | | | |
| | 4: Extended Written | 1h30m | 40% | | | |
| | 5: Comprehension, Practical Procedures, Data Handling and Analysis | 1h30m | 20% | | | |
| | 6: Case Study | - | 20% | | | |
| | 86: Case Study Mark Carried Forward | - | 20% | | | |
| | | | | Option Code A B C D | | |
| | | | | | | |
| | | | | | | |

**INSTRUCTIONS FOR THE SUBMISSION OF ENTRIES FOR THE
INTERNATIONAL CERTIFICATE OF EDUCATION GROUP AWARD
NOVEMBER 2011**

1. Introduction

ICE (International Certificate of Education) is the Group Award of the International General Certificate of Secondary Education (IGCSE) and requires the study of subjects drawn from the five different IGCSE subject groups. It gives Centres the opportunity to benefit from offering a broad and balanced curriculum.

2. Conditions of Entry

Centres are required to make a separate entry for ICE for those candidates who fulfil the criteria by virtue of their choice of IGCSE syllabus entries. All the requirements for ICE must normally be satisfied in one examination series. However, in exceptional circumstances, Cambridge may allow Centres to enter candidates who wish to qualify for ICE over two series, provided they are held during a period not exceeding 13 months - i.e. November to June or November to November, where the first series is the November IGCSE examination.

3. Subjects of Examination

The subjects for the IGCSE and for the ICE are grouped as follows. Please note that the list below contains all syllabuses available for ICE qualification in both the June and November exam series – please check the IGCSE syllabus list to confirm the availability of each subject for the November 2011 series.

| Group I - Languages | | Group II - Humanities |
|---------------------------------------------------------|---------------------------------------------|------------------------------------------------|
| 0500 First Language English | 0516 First Language Russian | 0447 India Studies |
| 0501 First Language French | 0518 First Language Thai | 0448 Pakistan Studies |
| 0502 First Language Spanish | 0519 Japanese | 0449 Bangladesh Studies |
| 0503 First Language Dutch | 0520 French | 0453 Development Studies |
| 0504 First Language Portuguese | 0521 First Language Korean | 0455 Economics |
| 0505 First Language German | 0525 German | 0457 Global Perspectives |
| 0506 First Language Sesotho | 0530 Spanish | 0460 Geography |
| 0507 First Language Japanese | 0531 IsiZulu as a Second Language | 0470 History |
| 0508 First Language Arabic | 0532 Kazakh as a Second Language | 0480 Latin |
| 0509 First Language Chinese | 0540 Portuguese | 0486 Literature (English) |
| 0510 English as a Second Language (Oral Endorsement) | 0543 Greek | 0488 Literature (Spanish) |
| 0511 English as a Second Language (Count-in Oral) | 0544 Arabic | 0490 Religious Studies |
| 0512 First Language Afrikaans | 0545 Indonesian | 0495 Sociology |
| 0513 First Language Turkish | 0546 Malay | 0680 Environmental Management* |
| 0514 First Language Czech | 0547 Chinese | |
| 0515 Dutch | 0548 Afrikaans as a Second Language | |
| | 0549 Hindi as a Second Language | |
| Group III - Sciences | Group IV - Mathematics | Group V - Creative/Vocational |
| 0600 Agriculture | 0580 Mathematics (Without coursework) | 0400 Art & Design |
| 0608 Twenty First Century Science | 0581 Mathematics (With coursework) | 0410 Music |
| 0610 Biology | 0606 Additional Mathematics | 0411 Drama |
| 0620 Chemistry | 0607 Cambridge International Mathematics | 0413 Physical Education |
| 0625 Physics | | 0417 Information & Communication Technology |
| 0652 Physical Science | | 0420 Computer Studies |
| 0653 Combined Science | | 0445 Design & Technology |
| 0654 Co-ordinated Sciences** | | 0450 Business Studies |
| 0680 Environmental Management* | | 0452 Accounting |
| | | 0454 Enterprise |
| | | 0471 Travel & Tourism |
| | | 0637 Child Development |
| | | 0648 Food & Nutrition |

* 0680 Environment Management can be taken as a qualifying subject in either Group II or Group III. The subject cannot be used to satisfy the criteria for both subject groups.

** 0654 Co-ordinated Sciences is a Double-Award subject, and counts as two subjects for ICE qualification purposes.

4. Choice of Subjects

All candidates who enter for ICE must enter and sit for at least seven subjects; these must include two (different) subjects from Group I (Languages) (i.e., for example only one of First Language English and English as a Second Language may count towards an ICE) and one subject from each of Groups II, III, IV and V. The seventh subject can be taken from any of the five subject groups.

With the permission of Cambridge, subjects taken at an equivalent level in another Cambridge examination (i.e., GCE Ordinary Level) may be counted towards ICE certification. Such substitution will not be permitted if the proposed substitute subject is available as an IGCSE subject. Each such non-IGCSE subject will be assigned, by Cambridge to a subject group and in effect will become an adopted IGCSE subject as far as ICE is concerned. No candidate who has taken fewer than six IGCSE subjects will be awarded an ICE certificate.

Please find below a list of adopted syllabuses available for ICE qualification purposes in 2011.

Adopted Non-IGCSE Syllabuses for ICE Qualification Purposes

| Group | Subject | Availability | |
|-------|------------------------------------------|--------------|----------|
| | | June | November |
| I | 3025 German | | Y |
| I | 3158 Setswana | | Y |
| I | 3162 Swahili | Y | |
| I | 3180 Arabic | | Y |
| I | 3195 Hindi | | Y |
| I | 3202 Nepali | Y | |
| I | 3204 Bengali | Y | |
| I | 3205 Sinhala | Y | |
| I | 3206 Tamil | Y | |
| I | 3247 First Language Urdu | Y | |
| I | 3248 Second Language Urdu | Y | Y |
| II | 2048 Religious Studies (Bible Knowledge) | Y | Y |
| II | 2055 Hinduism | | Y |
| II | 2056 Islamic Religion and Culture | | Y |
| II | 2058 Islamiyat | Y | Y |
| II | 2059 Pakistan Studies | | Y |
| III | 5038 Agriculture | Y | |
| III | 5096 Human and Social Biology | Y | Y |
| III | 5125 Science (Biology, Physics) | | Y |
| III | 5126 Science (Biology, Chemistry) | | Y |
| IV | 4040 Statistics | | Y |
| V | 6050 Fashion and Fabrics | | Y |
| V | 7100 Commerce | Y | Y |
| V | 7101 Commercial Studies | | Y |

5. How to enter for ICE

All candidates wishing to receive an ICE certificate must be entered for the ICE award by their Centre using CAMEO, CIE Direct Desktop or the Final Entry Form. An ICE entry is made by including the entry code 'ICE' for each candidate in addition to the syllabus and option codes for the subjects they will be entering in that session. This entry code should be added in the same manner as an additional syllabus code. An example of how to add an ICE entry using the Final Entry Form can be found on the entry form itself, and CAMEO users will find the 'ICE' entry code at the bottom of the list of available syllabuses.

IMPORTANT: Failure to include the 'ICE' entry code in the candidate entry will prevent an ICE certificate from being issued. IGCSE and/or GCE O Level certificates will still be issued as normal.

When Cambridge allows Centres to enter candidates for ICE over two examination series (see point 6 below), the previous entry details must also be provided when making the second series syllabus entries.

6. Candidates entering ICE over two examination series

In exceptional circumstances, Cambridge may allow Centres to enter candidates who wish to qualify for ICE at two sittings provided they are held during a period of 13 months, i.e., June to November, June to June, November to June, or November to November. For candidates wishing to qualify for ICE over two series, Centres must make the ICE entry in the second of the two series, and the candidate's previous entry details must also be supplied.

When making the syllabus entries for a two-series ICE candidate in their second examination series, Centres are not required to make carry-forward mark entries for the candidate's syllabus(es) from the first examination series. **Although Centres are not required to make carry-forward syllabus entries for two series ICE candidates, the previous entry details (Centre number/candidate number) must be indicated when making their second series syllabus entries in order to include the results achieved in the previous series.**

Syllabus exclusions in force within a single series will also apply to two-series ICE candidates, (i.e., a candidate may not enter for both 0620 Chemistry and 0653 Combined Science in the same series and, therefore, these syllabuses cannot both count towards ICE over two series).

7. Retaking syllabuses counting for ICE over two examination series

Centres should note that, whilst it is possible for candidates to retake first series syllabuses in the second series, the retake grade will not count for ICE qualification purposes.

8. ICE Candidates offering Music and Drama over two examination series

There is provision for Centres to offer a small group of IGCSE syllabuses (0410 Music and 0411 Drama) over two series instead of a single June series. This arrangement enables Centres to take the written component(s) in June and to submit coursework in the following November (of the same year). Such candidates will still be able to qualify for ICE if they wish to do so, provided certain conditions are met. As usual, the Centre will need to make sure that candidates are being entered for the correct entry option codes and that the accurate previous entry details are also being submitted.

Candidates entering for **ICE over one series**:

- (i) Candidates entering for ICE over one June series will **not** be able to use these IGCSE options towards their ICE award. For them, the full assessment must be completed in the June series to be able to use the syllabus and qualify for the ICE award.
- (ii) Candidates entering for ICE over one November series may use these IGCSE options towards their ICE award by entering the written component(s) in the June series and submitting their coursework in the November series of the same year.

Candidates entering for **ICE over two series**:

- (iii) June – June: candidates may **not** use these IGCSE options.
- (iv) June – November: candidates may use these IGCSE options.
- (v) November – June: candidates may **not** use these IGCSE options.
- (vi) November – November: candidates may **not** use these IGCSE options.

For awarding purposes, in cases (ii) and (iv) above, where candidates may use these IGCSE options towards ICE, we will not consider the second series entry of these syllabuses as a retake (please refer to point 7 above).

9. Confirmation of Entry

When you receive your Statement of Entries please check for the following messages. The table below indicates the reasons why these messages may occur and the actions that can consequently be taken:

| Statement to be shown on the Statement of Entry | ICE Entry Code Supplied? | Entry Syllabus Grouping Rules Satisfied? | Previous Entry Details Provided? | Action |
|--------------------------------------------------------------------------------------------------------------------------------|--------------------------|------------------------------------------|----------------------------------|------------------------------------------------------------------------------------------------------------|
| No Message | No | No | No/Yes | No Action |
| "Entry criteria for ICE not met in this session. Please check whether previous entry details should have been supplied" | Yes | No | No | Check whether the correct previous entry details have been supplied; if they have, then contact Cambridge. |
| "Entry criteria for ICE fully met in this session" | Yes | Yes | No | No Action. The candidate has been entered and qualifies for ICE. |
| "This candidate has met the entry criteria but has not been entered for the ICE." | No | Yes | No | Centre may enter the candidate for ICE if desired. |
| "Entry criteria for ICE not met in this and available previous sessions." | Yes | No | Yes | The ICE entry should be withdrawn as the candidate has not satisfied the ICE criteria. |
| "This candidate has met the entry criteria in this and available previous sessions but has not been entered for the ICE." | No | Yes | Yes | Centre may enter the candidate for ICE if desired. |
| "Entry criteria for ICE fully met in this and available previous sessions." | Yes | Yes | Yes | No Action. The candidate has been entered and qualifies for ICE. |
| "Entry criteria for ICE not met because previous sessions results mean that award rules cannot be satisfied by current entry." | Yes | Yes | Yes | The ICE entry should be withdrawn as the candidate has not satisfied the ICE criteria. |

10. Condition for the Award of the ICE

Successful IGCSE candidates will be placed in one of eight categories: A*(a*), A(a), B(b), C(c), D(d), E(e), F(f) or G(g). Grade A(a) is awarded to those candidates showing highest ability in a subject and Grade G(g) for a minimum satisfactory performance. Candidates who perform outstandingly well in a subject are awarded a 'starred A' grade (A*(a*)). Performances below the standard of grade G(g) are ungraded and not recorded on the certificates. Grades awarded in subjects are based on the total of the marks gained in the papers, unless additional requirements are specified in the subject Syllabus. To qualify for a grade, candidates must sit all the papers which they are required to offer by the Syllabus. Those who do not sit a paper but for whom a special consideration form is submitted, will be considered for the award of a grade.

In subjects where two levels of assessment are offered, candidates must state the level at which they wish to enter: either core or extended level. The grades available at core level are C(c) to G(g) and at extended level they are A*(a*) to E(e) or A*(a*) to G(g), depending on the syllabus. To qualify for ICE, candidates must obtain at least grade G(g) (or E(e) for GCE Ordinary Level subjects) in each of the seven subjects from the subject groups prescribed in Section 4.

Successful ICE candidates will be placed in one of three categories:

- Distinction:** Grade A(a) in five subjects and Grade C(c) or above in two subjects.
- Merit:** Grade C(c) or above in five subjects and Grade F(f) or above in two subjects.
- Pass:** Grade G(g) or above in seven subjects.

Where candidates have taken more than the required seven subjects, the award of Distinction and Merit will be decided on their seven best results (irrespective of subject groups and whether these results are IGCSE or GCE Ordinary level, provided that they have fulfilled the requirements of entering for and sitting at least six IGCSE subjects).

However, for the award of Pass, even where candidates have taken more than the required seven subjects, they must achieve at least Grade G(g) in each of the seven subjects from the prescribed subject groups (irrespective of whether these results are IGCSE or GCE Ordinary level, provided that they have fulfilled the requirements of entering for and sitting at least six IGCSE subjects). Candidates who fail to gain ICE will qualify for the award of

the IGCSE grade in the subjects taken. All the requirements for ICE must normally be satisfied at one and the same examination.

11. Exclusions

Syllabus exclusions in force within a single examination series will also apply in those cases where candidates are allowed to enter ICE over two series (i.e. a candidate may not enter for both 0620 Chemistry and 0653 Combined Science in the same series and, therefore, these syllabuses cannot both count towards ICE).

In general, candidates may not offer in any one examination:

- More than one of the alternatives in any subject, except where specified in the Syllabus.
- Any combination of subjects or papers forbidden by the subject Syllabus.
- More than one of subjects with identical titles from IGCSE and GCE Ordinary Level.

The above rules also apply to candidates entering for ICE over two examination series.

12. Results and Certificates

Candidates who achieve ICE in one examination series will receive an ICE Statement of Results, an IGCSE Certificate and a separate ICE Certificate. The IGCSE Certificate will show the grades achieved in individual subjects and the ICE Certificate will show the level of Award obtained only.

Candidates who achieve ICE over two examination series will receive an IGCSE Statement of Results and an IGCSE Certificate for the individual subjects taken at the end of the first series, and an ICE Statement of Results, an IGCSE Certificate for the individual subjects taken and a separate ICE Certificate at the end of the second series. The ICE Certificate will show the level of Award obtained only.

Note: Where a candidate has used GCE Ordinary Level subjects for ICE Award purposes, these will be included on the ICE Statement of Results and a separate GCE Certificate will be issued if appropriate.

No candidate who has taken fewer than six IGCSE subjects will be awarded an ICE certificate.

GENERAL CERTIFICATE OF EDUCATION ORDINARY LEVEL (GCE O LEVEL)

O Levels are designed for 14 to 16 year olds and aim to prepare students for academic progression (such as A and AS Level study) and equip them with the skills necessary for employment. They are established qualifications that keep pace with educational developments and trends. International O Levels are recognised throughout the world, by academic institutes and employers, as a mark of quality and evidence of real ability.

The International O Level curriculum places emphasis on broad and balanced study - with subjects drawn from areas covering Languages, Humanities, Social Sciences, Mathematics, Creative, Technical and Vocational. The curriculum is structured so students attain both practical skills and theoretical knowledge.

International O Levels are suitable for virtually all students and to take account of differing abilities there is a choice between Core and Extended curriculum papers in most subjects. They have been specially designed for an international market and are sensitive to the needs of different countries. These qualifications are designed for students whose first language may not be English and this is acknowledged throughout the examination process. The curriculum also allows teaching to be placed in a localised context, making it relevant in varying regions.

GCE O Level – Submission of Entries

The procedures explained on pages 03 to 24 should be followed. Please note that all entries for IGCSE, O Level and AS & A Level qualifications must be submitted on the same entry form.

GCE O Level Syllabuses in November 2011

Find below the key to all GCE O Level syllabuses available in November 2011, in alphabetical order.

KEY TO GCE O LEVEL SYLLABUSES (in alphabetical order):

| SYLLABUS NAME AND CODE | COMPONENT INFORMATION | DURATION | WEIGHTING | OPTION CODE | NOTES | |
|--------------------------------------------|----------------------------------------------------------|------------------|-------------------|-----------------------------------|------------------------------------------------------------------------------------------------------------------|--------------------------------------|
| ADDITIONAL COMBINED SCIENCE 5130 | 1: Multiple Choice 2: Theory | 1h 2h15m | 29% 71% | | May not be taken in the same examination series as 0608, 0610, 0625, 0652, 0653, 0654, 5054, 5070, 5090 or 5124. | |
| | | | | Option Code Leave Blank | | Components 1, 2 |
| ADDITIONAL MATHEMATICS 4037 | 11: Paper 11 21: Paper 21 | 2h 2h | 50% 50% | | May not be taken in the same examination series as 0606. | |
| | | | | Option Code AX | | Components 11, 21 |
| AGRICULTURE 5038 | 11: Paper 11 2: Coursework 31: Practical 31 | 2h - 1h15m | 77% 23% 23% | | Option AX is not available to private candidates. May not be taken in the same examination series as 0600. | |
| | | | | Option Code AX BX | | Components 11, 2 11, 31 |
| | | | | | | |
| ARABIC 3180 | 1: Composition 2: Translation & Reading Comprehension | 1h30m 1h30m | 45% 55% | | | |
| | | | | Option Code A | | Components 1, 2 |

KEY TO GCE O LEVEL SYLLABUSES (in alphabetical order):

| SYLLABUS NAME AND CODE | COMPONENT INFORMATION | DURATION | WEIGHTING | OPTION CODE | NOTES |
|------------------------|----------------------------------------------------------------------------------------------------------------------------------------------------------------------------------------------------------------------------------------------------------------------------------|-----------------------------------------------|----------------------------------------------------|----------------------------------------------------------------------------------------------------------------------------------------------------------|-------------------------------------------------------------------------------------------------------------------------------------------------------------------------------------------------------------------------------------------------------------------------------------------------------------------------------------|
| ART 6010 | 1: Drawing and/or Painting from Still Life 2: Drawing and/or Painting from Observation 3: Drawing and/or Painting from a Living Person 4: Composition in Colour 5: Craft A - Design on Paper 6: Craft B - Design in 2D and 3D 86: Craft B Mark Carried Forward | 2h30m 2h30m 2h30m 3h 3h - - | 33.3% 33.3% 33.3% 33.3% 33.3% 33.3% | | Options C, F, H, J, M, R, S, V and W are not available to private candidates. May not be taken in the same examination series as 0400. |
| | | | | Option Code A AA AB AC AD AE AF B C D E F G H J K L M P R S T V W X Y Z | Components 1, 2, 4 1, 5, 86 2, 3, 86 2, 4, 86 2, 5, 86 3, 4, 86 3, 5, 86 1, 2, 5 1, 2, 6 1, 3, 4 1, 3, 5 1, 3, 6 1, 4, 5 1, 4, 6 1, 5, 6 2, 3, 4 2, 3, 5 2, 3, 6 2, 4, 5 2, 4, 6 2, 5, 6 3, 4, 5 3, 4, 6 3, 5, 6 1, 2, 86 1, 3, 86 1, 4, 86 |

KEY TO GCE O LEVEL SYLLABUSES (in alphabetical order):

| SYLLABUS NAME AND CODE | COMPONENT INFORMATION | DURATION | WEIGHTING | OPTION CODE | NOTES |
|------------------------------------------------|-----------------------------------------------------------------------------------------------------|----------------------|-------------------|-----------------------------------|------------------------------------------------------------------------------------------------------------------------------------|
| BIOLOGY 5090 | 11: Multiple Choice 11 21: Theory 21 31: Practical Test 31 61: Alternative to Practical 61 | 1h | 25% | | May not be taken in the same examination series as 0610, 0653, 0654, 5096, 5125, 5126, 5129 or 5130. |
| | | 1h45m 1h15m 1h | 50% 25% 25% | | |
| BUSINESS STUDIES 7115 | 11: Short Answer/Structured Response 11 21: Case Study 21 | 1h45m | 50% | | May not be taken in the same examination series as 0450. |
| | | 1h45m | 50% | | |
| | | | | Option Code X | |
| CDT: DESIGN & COMMUNICATION 7048 | 1: Structured 2: Coursework | 2h45m | 70% | | |
| | | - | 30% | | |
| | | | | Option Code Leave Blank | |
| CHEMISTRY 5070 | 11: Multiple Choice 11 21: Theory 21 31: Practical Test 31 41: Alternative to Practical 41 | 1h | 27.6% | | May not be taken in the same examination series as 0620, 0652, 0653, 0654, 5124, 5126, 5129 or 5130. |
| | | 1h30m | 51.7% | | |
| | | 1h30m | 20.7% | | |
| | | 1h | 20.7% | | |
| | | | | Option Code AX BX | |
| COMBINED SCIENCE 5129 | 11: Multiple Choice 21: Theory | 1h | 29% | | May not be taken in the same examination series as 0608, 0610, 0625, 0652, 0653, 0654, 5054, 5070, 5090, 5096, 5124, 5125 or 5126. |
| | | 2h15m | 71% | | |
| | | | | Option Code AX | |

KEY TO GCE O LEVEL SYLLABUSES (in alphabetical order):

| SYLLABUS NAME AND CODE | COMPONENT INFORMATION | DURATION | WEIGHTING | OPTION CODE | NOTES |
|--------------------------------------|----------------------------------------------------------------------------------------------------|--------------------------|--------------------------|----------------------------|--------------------------------------------------------------------------------------------------------------------|
| COMMERCE 7100 | 11: Multiple Choice 11 21: Written 21 | 1h 2h | 30% 70% | | May not be taken in the same examination series as 7101. |
| | | | | Option Code X | Components 11, 21 |
| COMMERCIAL STUDIES 7101 | 1: Elements of Commerce 2: Arithmetic 3: Text Processing | 2h 2h 2h | 50% 50% 50% | | May not be taken in the same examination series as 7100. |
| | | | | Option Code A | Components 1, 2 |
| | | | | Option Code B | Components 1, 3 |
| | | | | | |
| COMPUTER STUDIES 7010 | 11: Paper 11 2: Project 31: Alternative to Coursework 31 82: Project Mark Carried Forward | 2h30m - 1h30m - | 75% 25% 25% 25% | | Option AX not available to private candidates. May not be taken in the same examination series as 0417 or 0420. |
| | | | | Option Code AX | Components 11, 2 |
| | | | | Option Code BX | Components 11, 82 |
| | | | | Option Code CX | Components 11, 31 |
| DESIGN AND TECHNOLOGY 6043 | 1: Paper 1 2: Design Project | 2h30m - | 40% 60% | | Not available to private candidates. May not be taken in the same examination series as 0445. |
| | | | | Option Code Leave Blank | Components 1, 2 |
| ECONOMICS 2281 | 11: Multiple Choice 11 21: Structured Questions 21 | 1h 2h | 30% 70% | | May not be taken in the same examination series as 0455. |
| | | | | Option Code X | Components 11, 21 |

KEY TO GCE O LEVEL SYLLABUSES (in alphabetical order):

| SYLLABUS NAME AND CODE | COMPONENT INFORMATION | DURATION | WEIGHTING | OPTION CODE | NOTES |
|-----------------------------------------|----------------------------------------|----------|-----------|--------------------|------------------------------------------------------------------------------------------------------------------------------------------------------------------------|
| ENGLISH LANGUAGE 1123 | 11: Writing 11 | 1h30m | 50% | | May not be taken in the same examination series as 0500, 0510 or 0511. |
| | 21: Reading 21 | 1h45m | 50% | | |
| ENVIRONMENTAL MANAGEMENT 5014 | 11: Paper 11 | 2h15m | 60% | | May not be taken in the same examination series as 0680. |
| | 21: Paper 21 | 1h30m | 40% | | |
| | | | | Option Code | Components |
| | | | | X | 11, 21 |
| FASHION AND FABRICS 6050 | 1: Written | 2h | 40% | | Not available to private candidates. |
| | 2: Practical | 2h30m | 40% | | |
| | 4: Coursework 2 | - | 20% | | |
| | 82: Practical Mark Carried Forward 82 | - | 40% | | |
| | 84: Coursework Mark Carried Forward | - | 20% | | |
| | | | | Option Code | Components |
| | | | | E | 1, 2, 4 |
| | | | | F | 1, 2, 84 |
| | | | | G | 1, 4, 82 |
| | | | | H | 1, 82, 84 |
| FOOD AND NUTRITION 6065 | 1: Written | 2h | 50% | | Not available to private candidates. May not be taken in the same examination series as 0648. The Practical component is preceded by a planning period of 1h30m. |
| | 2: Practical | 2h30m | 50% | | |
| | 82: Nov Practical Mark Carried Forward | - | 50% | | |
| | | | | | |
| | | | | | |
| | | | | Option Code | Components |
| | | | | A B | 1, 2 1, 82 |
| GEOGRAPHY 2217 | 11: Geographical Themes 11 | 1h45m | 50% | | May not be taken in the same examination series as 0460. |
| | 21: Investigation and Skills 21 | 2h15m | 50% | | |
| | | | | Option Code | Components |
| | | | | X | 11, 21 |

KEY TO GCE O LEVEL SYLLABUSES (in alphabetical order):

| SYLLABUS NAME AND CODE | COMPONENT INFORMATION | DURATION | WEIGHTING | OPTION CODE | NOTES |
|---------------------------------------------------------|-----------------------------------|----------|-----------|----------------------|------------------------------------------------------------------------|
| GERMAN (Syllabus B) 3025 | 1: Translation and Composition | 1h30m | 50% | | |
| | 2: Reading Comprehension | 1h30m | 50% | Option Code | Components |
| | 3: Speaking | 10m | - | A B | 1, 2 1, 2, 3 |
| HINDI 3195 | 1: Composition | 2h | 45% | | |
| | 2: Language Usage & Comprehension | 1h30m | 55% | Option Code | Components |
| | | | | A | 1, 2 |
| HINDUISM 2055 | 1: Paper 1 | 2h30m | 100% | | May not be taken in the same examination series as 8058 or 9014. |
| | | | | Option Code | Components |
| | | | | Leave Blank | 1 only |
| HISTORY (World Affairs, 1917-1991) 2158 | 1: Paper 1 | 2h30m | 100% | | May not be taken in the same examination series as 0470. |
| | | | | Option Code | Components |
| | | | | Leave Blank | 1 only |
| HUMAN AND SOCIAL BIOLOGY 5096 | 11: Multiple Choice 11 | 1h | 29% | | May not be taken in the same examination series as 0608, 0610 or 5090. |
| | 21: Theory 21 | 2h | 71% | | |
| | | | | Option Code | Components |
| | | | | X | 11, 21 |
| ISLAMIC RELIGION AND CULTURE 2056 | 1: Paper 1 | 2h30m | 100% | | May not be taken in the same examination series as 2058, 8053 or 9013. |
| | | | | Option Code | Components |
| | | | | Leave Blank | 1 only |

KEY TO GCE O LEVEL SYLLABUSES (in alphabetical order):

| SYLLABUS NAME AND CODE | COMPONENT INFORMATION | DURATION | WEIGHTING | OPTION CODE | NOTES |
|----------------------------------------------------|-----------------------------------------------------------------------------------------------------|-------------------------|----------------------------------|----------------------------|------------------------------------------------------------------------------------------------------|
| ISLAMIYAT 2058 | 11: Paper 11 21: Paper 21 | 1h30m 1h30m | 50% 50% | | May not be taken in the same examination series as 2056, 8053 or 9013. |
| | | | | Option Code AX | Components 11, 21 |
| LITERATURE IN ENGLISH 2010 | 11: Paper 11 | 2h40m | 100% | | May not be taken in the same examination series as 0486. |
| | | | | Option Code X | Components 11 only |
| MATHEMATICS SYLLABUS D (Calculator) 4024 | 11: Paper 11 21: Paper 21 | 2h 2h30m | 50% 50% | | May not be taken in the same examination series as 0580, 0581 or 0607. |
| | | | | Option Code X | Components 11, 21 |
| PAKISTAN STUDIES 2059 | 1: History and Culture of Pakistan 2: Environment of Pakistan | 1h30m 1h30m | 50% 50% | | May not be taken in the same examination series as 0448. |
| | | | | Option Code Leave Blank | Components 1, 2 |
| PHYSICS 5054 | 11: Multiple Choice 11 21: Theory 21 31: Practical Test 31 41: Alternative to Practical 41 | 1h 1h45m 2h 1h | 27.6% 51.7% 20.7% 20.7% | | May not be taken in the same examination series as 0625, 0652, 0653, 0654, 5124, 5125, 5129 or 5130. |
| | | | | Option Code AX BX | Components 11, 21, 31 11, 21, 41 |

KEY TO GCE O LEVEL SYLLABUSES (in alphabetical order):

| SYLLABUS NAME AND CODE | COMPONENT INFORMATION | DURATION | WEIGHTING | OPTION CODE | NOTES |
|----------------------------------------------------|--------------------------------|----------|-----------|-----------------------------------|------------------------------------------------------------------------------------------------------------------------------|
| PRINCIPLES OF ACCOUNTS 7110 | 11: Paper 11 (Multiple Choice) | 1h | 33% | | May not be taken in the same examination series as 0452 or 9706. |
| | 21: Paper 21 (Structured) | 2h | 67% | | |
| RELIGIOUS STUDIES (BIBLE KNOWLEDGE) 2048 | 11: Luke & Acts (1-21:15) | 1h15m | 40% | | May not be taken in the same examination series as 0490. |
| | Short Answer Questions 11 | | | | |
| | 21: Luke & Acts (1-21:15) | 1h45m | 60% | | |
| | Essay Questions 21 | | | Option Code X | Components 11, 21 |
| SCIENCE (Biology, Chemistry) 5126 | 1: Multiple Choice | 1h | 24% | | May not be taken in the same examination series as 0608, 0610, 0653, 0654, 5070, 5090, 5124, 5125 or 5129. |
| | 3: Theory (Chemistry) | 1h15m | 38% | | |
| | 4: Theory (Biology) | 1h15m | 38% | | |
| | | | | Option Code Leave Blank | |
| SCIENCE (Biology, Physics) 5125 | 1: Multiple Choice | 1h | 24% | | May not be taken in the same examination series as 0608, 0610, 0625, 0653, 0654, 5054, 5090, 5124, 5126 or 5129. |
| | 2: Theory (Physics) | 1h15m | 38% | | |
| | 4: Theory (Biology) | 1h15m | 38% | | |
| | | | | Option Code Leave Blank | |
| SCIENCE (Physics, Chemistry) 5124 | 1: Multiple Choice | 1h | 24% | | May not be taken in the same examination series as 0608, 0620, 0625, 0652, 0653, 0654, 5054, 5070, 5125, 5126, 5129 or 5130. |
| | 2: Theory (Physics) | 1h15m | 38% | | |
| | 3: Theory (Chemistry) | 1h15m | 38% | | |
| | | | | Option Code Leave Blank | |

KEY TO GCE O LEVEL SYLLABUSES (in alphabetical order):

| SYLLABUS NAME AND CODE | COMPONENT INFORMATION | DURATION | WEIGHTING | OPTION CODE | NOTES |
|-------------------------------------|----------------------------------------------------------------------------|----------|-----------|----------------------------|------------------------------------------------------------------|
| SECOND LANGUAGE URDU 3248 | 1: Composition & Translation 2: Language Usage, Summary & Comprehension | 2h | 50% | | |
| | | 1h45m | 50% | Option Code A | Components 1, 2 |
| SETSWANA 3158 | 1: Language 2: Literature | 2h30m | 60% | | |
| | | 1h30m | 40% | Option Code Leave Blank | Components 1, 2 |
| SOCIOLOGY 2251 | 11: Paper 11 21: Paper 21 | 2h30m | 60% | | May not be taken in the same examination series as 0495. |
| | | 1h45m | 40% | Option Code X | Components 11, 21 |
| SPANISH 3035 | 11: Translation & Composition 11 21: Reading Comprehension 21 | 1h30m | 50% | | May not be taken in the same examination series as 0502 or 0530. |
| | | 1h30m | 50% | Option Code AX | Components 11, 21 |
| STATISTICS 4040 | 11: Paper 11 21: Paper 21 | 2h15m | 50% | | |
| | | 2h15m | 50% | Option Code X | Components 11, 21 |

KEY TO GCE O LEVEL SYLLABUSES (in alphabetical order):

| SYLLABUS NAME AND CODE | COMPONENT INFORMATION | DURATION | WEIGHTING | OPTION CODE | NOTES |
|----------------------------|------------------------------------------------------------------------------------------------------------|-----------------------|--------------------------|--------------------------------------------|-----------------------------------------------------------------------------------------------------------|
| TRAVEL AND TOURISM 7096 | 1: Paper 1 2: Paper 2 Alternative to Coursework 3: Coursework 83: Coursework Mark Carried Forward | 2h 2h30m - - | 60% 40% 40% 40% | | Option B not available to private candidates. May not be taken in the same examination series as 0471. |
| | | | | Option Code | |
| | | | | Components 1, 2 1, 3 1, 83 | |
| | | | | A B C | |

GENERAL CERTIFICATE OF EDUCATION ADVANCED SUBSIDIARY LEVEL AND ADVANCED LEVEL (GCE AS & A LEVEL)

GCE AS and A Levels are one of the most recognised qualifications around the world. They are accepted as proof of academic ability for entry into universities, institutes of higher education and military schools and they are equally important for young people moving into employment. Cambridge has offered GCE Advanced Level qualifications for over 50 years.

Cambridge AS and A Levels are continually monitored, developed and improved so that they are recognised worldwide as a mark of quality and evidence of real ability and understanding. AS and A Levels are known throughout the world as providing a foundation for success.

The Advanced Subsidiary level examination is intended primarily for students who have studied the subjects for a period of one year beyond the Ordinary Level or IGCSE stage. The Advanced Subsidiary level usually entails taking one or more of the A Level papers, and may be taken by students halfway through their A Level course.

The Advanced Level examination is intended primarily for students who have studied the subjects for a period of two years beyond the Ordinary Level, or IGCSE.

GCE AS & A Level - Staged Assessment

Subject to the requirements of the particular A Level syllabus, an award in an AS Level syllabus may be used towards the award of an A Level in the same subject in a subsequent series within a 13 month period ("staged assessment"). These syllabuses are shown with an asterisk in the syllabus key.

The following routes apply:

| Routes | Possible situation | Example of Suitable Entry for 9708 Economics |
|----------------|-------------------------------------------------------------------------------------------------------------------------------------------------------------------------------------------------------------------------------------|---------------------------------------------------------------------------------------------------------------------------------------------|
| Route 1 | Candidate enters for all A Level papers in a single series. | 9708 option code AX Entering for components 11, 21, 31, 41 (full A Level) |
| Route 2 | Candidate enters for A Level who wishes to have the AS Level result achieved in the previous June counted towards the A Level award and is not retaking those components that contributed to the AS again. | 9708 option code BX Entering for components 31, 41, 66 (A2 components plus AS carry forward mark from June) |
| Route 3 | Candidate enters for A Level who wishes to have the AS Level result achieved in the previous November counted towards the A Level award and is not retaking those components that contributed to the AS Level again. | 9708 option code CX Entering for components 31, 41, 67 (A2 components plus AS carry forward mark from November) |
| Route 4 | Candidate enters for all A Level papers in the same series; wishes to have the result from either or both of a previous June and/or November series considered for the A Level award. Cambridge will award the best possible grade. | 9708 option code DX Entering from components 11, 21, 31, 41, 66, 67 (full A Level plus carry forward marks from June and/or November) |

Please note that staged assessments will not be available in Languages other than English, or in certain subjects that do not have an AS Level syllabus.

Centres requiring further information on Staged Assessment should refer to section 2.7 of the Handbook for Centres 2011.

GCE AS & A Level – Compensatory AS Level

Some candidates who have entered for an A Level in a subject will be awarded an AS result rather than an A Level result. This is because their performance, while not meeting the standards of the A Level examination, successfully meets those required for the AS Level.

Candidates who have failed to reach the required standard in the A Level examination, but who would have passed an AS Level examination will receive a Statement of Result which shows the AS performance, graded a(a)-e(e), providing a clear indication of their achievement.

If a candidate already has an AS result for the subject but takes the AS components again in the same examination series as the other A Level components, a compensatory AS grade will be awarded on the AS components sat that series if the candidate does well enough on the AS components but has not obtained a Grade E(e) or higher at A Level. The compensatory AS grade will be awarded even if the candidate has a previous AS result. However, if a candidate has not re-taken the AS papers but carried forward an AS result, no compensatory AS grade will be awarded as the candidate has already been certificated on those papers.

Please note that Compensatory AS results are not available for all subjects, as not all syllabuses are available at AS Level.

Not all examinations boards adopt this practice; therefore Cambridge is unique in this respect. This service to candidates is part of Cambridge's commitment to ensuring accurate and reliable results, which fully recognise the nature of a candidate's achievement.

GCE AS & A Level – Retaking GCE AS & A Levels and carry forward options

Schools or colleges are best placed to give candidates advice with respect to re-takes. If the AS qualification has been achieved with a grade that accurately reflects the candidate's ability, then candidates may, with the help of their school or college, consider whether to carry that AS Level mark forward to their A Level entry; in these circumstances the candidate need not enter for the AS Level papers again. If a school or college believes that a candidate's AS grade could be improved in a subsequent examination series, then they may advise re-taking all the papers. A Centre may opt to leave the decision open, advising the candidate to re-take all papers but asking Cambridge via entry option codes to calculate the A Level grade using either the previous AS components or the current AS components.

Subject to the requirements of the particular A Level syllabus, an award in a AS Level syllabus in November 2010 may be used towards the award of an A Level in the same subject in June 2011 and/or November 2011, and an award in an AS Level syllabus in June 2011 may be used towards the award of an A Level in the same subject in November 2011 and/or June 2012.

It is not possible to carry forward an AS Level result to examination series other than those specified, or to carry forward a result in an individual component unless it constitutes a full AS Level award.

Centres entering candidates for carry forward options should indicate their intentions to Cambridge by choosing the correct option code. Centres must also remember to include each candidate's previous entry details when submitting their entries.

Advanced International Certificate of Education Diploma (AICE Diploma)

The AICE Diploma provides a high-quality, English-medium qualification which prepares young people for honours degree programmes. It is a 'group' certificate which requires the study of subjects drawn from three curriculum areas. The AICE Diploma offers students the opportunity to tailor their studies to their individual interests, abilities and future plans within an international curriculum framework.

For the procedures on how to enter candidates for the Advanced International Certificate of Education Diploma (AICE Diploma) please refer to page 90 of this booklet.

GCE AS & A Level – Submission of Entries

The procedures explained on pages 03 to 24 should be followed. Please note that all entries for IGCSE, O Level and AS & A Level qualifications must be submitted on the same entry form.

GCE AS & A Level Syllabuses in November 2011

Find below the key to all GCE AS & A Level syllabuses available in November 2011, in alphabetical order.

KEY TO GCE AS & A LEVEL SYLLABUSES (in alphabetical order):

* INDICATES THAT THE SYLLABUS INCLUDES OPTIONS THAT CAN BE ENTERED AS PART OF A STAGED ASSESSMENT

| SYLLABUS NAME AND CODE | COMPONENT INFORMATION | DURATION | | WEIGHTING | | OPTION CODE | NOTES |
|-----------------------------------|-------------------------------------------------------------------------------------------------------------------------------------------------------------------------------------------------------------------------------|----------|----------|-----------|----------|-------------|------------------------------------------------------------------------------------------------------------------------------|
| | | A LEVEL | AS LEVEL | A LEVEL | AS LEVEL | | |
| ACCOUNTING* 9706 | 11: Multiple Choice 11 (Core) 21: Structured Questions 21 (Core) 31: Multiple Choice 31 (Supplement) 41: Problem Solving 41 (Supplement) 66: June AS Mark Carried Forward 67: November AS Mark Carried Forward | 1h | 15% | 30% | | | May not be taken in the same examination series as 7110. |
| | | 1h30m | 35% | 70% | | | |
| | | 1h | 15% | - | | | |
| | | 2h | 35% | - | | | |
| | | - | 50% | - | | | |
| | | - | 50% | - | | | |
| | | | | | | | Components 11, 21, 31, 41 31, 41, 66 31, 41, 67 11, 21, 31, 41, 66, 67 11, 21 (AS Level only) |
| | | | | | | | Option Code AX BX CX DX SX |
| AFRIKAANS 9679 | 1: Speaking (Optional) 2: Reading & Writing 3: Essay 4: Texts | 20m | - | - | | | A Level only May not be taken in the same examination series as 0512, 0548, 8679 or 8779. |
| | | 1h45m | 45% | - | | | |
| | | 1h30m | 20% | - | | | |
| | | 2h30m | 35% | - | | | |
| | | | | | | | Components 1, 2, 3, 4 2, 3, 4 |
| | | | | | | | Option Code A B |
| AFRIKAANS LANGUAGE 8679 | 1: Speaking (Optional) 2: Reading & Writing 3: Essay | 20m | - | - | | | AS Level only May not be taken in the same examination series as 0512, 0548, 8779 or 9679. |
| | | 1h45m | - | 70% | | | |
| | | 1h30m | - | 30% | | | |
| | | | | | | | Components 2, 3 1, 2, 3 |
| | | | | | | | Option Code SA SB |

KEY TO GCE AS & A LEVEL SYLLABUSES (in alphabetical order):

* INDICATES THAT THE SYLLABUS INCLUDES OPTIONS THAT CAN BE ENTERED AS PART OF A STAGED ASSESSMENT

| SYLLABUS NAME AND CODE | COMPONENT INFORMATION | DURATION | WEIGHTING | | OPTION CODE | NOTES |
|--------------------------------------------------------------------|--------------------------------------|----------|-----------|----------|--------------------------------------------------|------------------------------------------------------------------------------------------------------------------------------------------------------------------------------|
| | | | A LEVEL | AS LEVEL | | |
| APPLIED INFORMATION & COMMUNICATION TECHNOLOGY* 9713 | 11: Written A 11 | 1h15m | 20% | 40% | | May not be taken in the same examination series as 9691. Components 11, 2, 31, 4 31, 4, 66 31, 4, 67 11, 2, 31, 4, 66, 67 11, 2 (AS Level only) |
| | 2: Practical Test A | 2h30m | 30% | 60% | | |
| | 31: Written B 31 | 1h15m | 20% | - | | |
| | 4: Practical Test B | 2h30m | 30% | - | Option Code | |
| | 66: June AS Mark Carried Forward | - | 50% | - | AX | |
| | 67: November AS Mark Carried Forward | - | 50% | - | BX CX DX SX | |
| ARABIC 9680 | 2: Reading & Writing | 1h45m | 35% | - | | A Level only May not be taken in the same examination series as 8680. Components 2, 3, 4, 5 |
| | 3: Essay | 1h30m | 20% | - | | |
| | 4: Texts | 2h30m | 35% | - | Option Code | |
| | 5: Prose | 45m | 10% | - | A | |
| | | | | | | |
| ARABIC LANGUAGE 8680 | 2: Reading & Writing | 1h45m | - | 70% | | AS Level only May not be taken in the same examination series as 9680. Components 2, 3 |
| | 3: Essay | 1h30m | - | 30% | | |
| | | | | | Option Code SB | |

KEY TO GCE AS & A LEVEL SYLLABUSES (in alphabetical order):

* INDICATES THAT THE SYLLABUS INCLUDES OPTIONS THAT CAN BE ENTERED AS PART OF A STAGED ASSESSMENT

| SYLLABUS NAME AND CODE | COMPONENT INFORMATION | DURATION | WEIGHTING | | OPTION CODE | NOTES | |
|-----------------------------------------|---------------------------------------------------|----------|-----------|-----------|-----------------------------------|--------------------------------------|---------------------------|
| | | | A LEVEL | AS LEVEL | | | |
| ART AND DESIGN* 9704 | 1: Controlled Test | 15hrs | 30% | 60% | | Not available to private candidates. | |
| | 2: Coursework A | - | 20% | 40% | | | |
| | 3: Coursework B | - | 30% | - | Option Code | | |
| | 4: Personal Study | - | 20% | - | A | | |
| | 62: June or November Paper 2 Mark Carried Forward | - | 20% | 40% | B | | |
| | 64: June or November Paper 4 Mark Carried Forward | - | 20% | - | C | | |
| | 66: June Marks Carried Forward | - | 50% | - | D | | |
| | 67: November Marks Carried Forward | - | 50% | - | E | | |
| | 83: June Paper 3 Mark Carried Forward | - | 30% | - | F | | |
| | 93: November Paper 3 Mark Carried Forward | - | 30% | - | G | | |
| | | | | | H | | |
| | | | | | S | | |
| | | | | | SA | | |
| | | | | | 1, 2, 3, 4 | | |
| | | | | | 3, 4, 66 | | |
| | | | | | 3, 4, 67 | | |
| | | | | | 1, 2, 3, 4, 66, 67 | | |
| | | | | | 1, 3, 4, 62 | | |
| | | | | | 1, 2, 3, 64 | | |
| | | | | | 1, 2, 4, 83 | | |
| | | | | | 1, 2, 4, 93 | | |
| | | | | | 1, 2 (AS Level only) | | |
| | | | | | 1, 62 (AS Level only) | | |
| BIOLOGY* 9700 | 11: Multiple Choice 11 | 1h | 15% | 31% | | | |
| | 21: AS Structured Questions 21 | 1h15m | 23% | 46% | | | |
| | 31: Advanced Practical Skills 31 | 2h | 12% | 23% | Option Codes | | |
| | 41: A2 Structured Questions 41 | 2h | 38% | - | AX | | |
| | 51: Planning, Analysis and Evaluation 51 | 1h15m | 12% | - | BX | | |
| | 66: June AS Mark Carried Forward | - | 50% | - | CX | | |
| | 67: November AS Mark Carried Forward | - | 50% | - | DX | | |
| | | | | | S1 | | |
| | | | | | | | 11, 21, 31, 41, 51 |
| | | | | | | | 41, 51, 66 |
| | | | | | 41, 51, 67 | | |
| | | | | | 11, 21, 31, 41, 51, 66, 67 | | |
| | | | | | 11, 21, 31 (AS Level only) | | |
| BUSINESS STUDIES* 9707 | 11: Short Answer/Essay 11 | 1h15m | 20% | 40% | | | |
| | 21: Data Response 21 | 1h30m | 30% | 60% | | | |
| | 31: Case Study 31 | 3h | 50% | - | Option Code | | |
| | 66: June AS Mark Carried Forward | - | 50% | - | AX | | |
| | 67: November AS Mark Carried Forward | - | 50% | - | BX | | |
| | | | | | CX | | |
| | | | | | DX | | |
| | | | | SX | | | |
| | | | | | 11, 21, 31 | | |
| | | | | | 31, 66 | | |
| | | | | | 31, 67 | | |
| | | | | | 11, 21, 31, 66, 67 | | |
| | | | | | 11, 21 (AS Level only) | | |

KEY TO GCE AS & A LEVEL SYLLABUSES (in alphabetical order):

* INDICATES THAT THE SYLLABUS INCLUDES OPTIONS THAT CAN BE ENTERED AS PART OF A STAGED ASSESSMENT

| SYLLABUS NAME AND CODE | COMPONENT INFORMATION | DURATION | WEIGHTING | | OPTION CODE | NOTES |
|--------------------------------------|------------------------------------------|----------|-----------|-----------|----------------------------|------------------------------------------------------------------|
| | | | A LEVEL | AS LEVEL | | |
| CHEMISTRY* 9701 | 11: Multiple Choice 11 | 1h | 15% | 31% | | |
| | 21: AS Structured Questions 21 | 1h15m | 23% | 46% | | |
| | 31: Advanced Practical Skills 31 | 2h | 12% | 23% | Option Code | Components |
| | 41: A2 Structured Questions 41 | 2h | 38% | - | AX | 11, 21, 31, 41, 51 |
| | 51: Planning, Analysis and Evaluation 51 | 1h15m | 12% | - | BX | 41, 51, 66 |
| 66: June AS Mark Carried Forward | - | 50% | - | CX | 41, 51, 67 | |
| 67: November AS Mark Carried Forward | - | 50% | - | DX | 11, 21, 31, 41, 51, 66, 67 | |
| | | | | | S1 | 11, 21, 31 (AS Level only) |
| CHINESE 9715 | 21: Reading & Writing 21 | 1h45m | 35% | - | | A Level only |
| | 31: Essay 31 | 1h30m | 20% | - | | May not be taken in the same examination series as 8669 or 8681. |
| | 41: Texts 41 | 2h30m | 35% | - | | |
| | 51: Prose 51 | 45m | 10% | - | | |
| | | | | | Option Code | Components |
| | | | | AX | 21, 31, 41, 51 | |
| CHINESE LANGUAGE 8681 | 21: Reading & Writing | 1h45m | - | 70% | | AS Level only |
| | 31: Essay | 1h30m | - | 30% | | May not be taken in the same examination series as 9715. |
| | | | | | Option Code | Components |
| | | | | X | 21, 31 | |
| CHINESE LITERATURE 8669 | 41: Texts 41 | 2h30m | - | 100% | | AS Level only |
| | | | | | | May not be taken in the same examination series as 9715. |
| | | | | | Option Code | Components |
| | | | | X | 41 only | |
| CLASSICAL STUDIES 9274 | 11: Greek Civilisation 11 | 1h30m | - | 50% | | AS Level only |
| | 21: Roman Civilisation 21 | 1h30m | - | 50% | | Components |
| | | | | | Option Code | 11, 21 |
| | | | | SX | | |

Zone 2 - GCE AS & A LEVEL

KEY TO GCE AS & A LEVEL SYLLABUSES (in alphabetical order):

* INDICATES THAT THE SYLLABUS INCLUDES OPTIONS THAT CAN BE ENTERED AS PART OF A STAGED ASSESSMENT

| SYLLABUS NAME AND CODE | COMPONENT INFORMATION | DURATION | WEIGHTING | | OPTION CODE | NOTES |
|---------------------------|-------------------------------------------|----------|-----------|-----------|-----------------------------------------------------------------------------------------------------------------------------------------------------|----------------------------------------------------------|
| | | | A LEVEL | AS LEVEL | | |
| COMPUTING* 9691 | 11: Written Paper 11 | 1h30m | 25% | 50% | | May not be taken in the same examination series as 9713. |
| | 21: Written Paper 21 | 2h | 25% | 50% | | |
| | 31: Written Paper 31 | 2h | 30% | - | | |
| | 4: Project | - | 20% | - | Option Code | |
| | 66: June AS Mark Carried Forward | - | 50% | - | AX | |
| | 67: November AS Mark Carried Forward | - | 50% | - | BX | |
| | 84: June Paper 4 Mark Carried Forward | - | 20% | - | CX | |
| | 94: November Paper 4 Mark Carried Forward | - | 20% | - | DX | |
| | | | | | EX | |
| | | | | | FX | |
| | | | | S1 | | |
| | | | | | Components 11, 21, 31, 4 31, 4, 66 31, 4, 67 11, 21, 31, 4, 66, 67 11, 21, 31, 84 11, 21, 31, 94 11, 21 (AS Level only) | |

| | | | | | | |
|---------------------------------------|---------------------------------------------|----|-----|-----|----------------------------------------------------------------------------------------------------------------------------------------------------------|--------------------------------------|
| DESIGN AND TECHNOLOGY* 9705 | 11: Written 11 | 3h | 30% | 60% | | Not available to private candidates. |
| | 2: Project 1 | - | 20% | 40% | | |
| | 31: Written 31 | 3h | 30% | - | Option Code | |
| | 4: Project 2 | - | 20% | - | AX | |
| | 62: Project 1 November Mark Carried Forward | - | 20% | 40% | CX | |
| | 64: Project 2 November Mark Carried Forward | - | 20% | - | DX | |
| | 67: November AS Mark Carried Forward | - | 50% | - | EX | |
| | | | | | FX | |
| | | | | | SX | |
| | | | | | SA | |
| | | | | | Components 11, 2, 31, 4 31, 4, 67 11, 2, 31, 4, 67 11, 31, 4, 62 11, 31, 62, 64 11, 2 (AS Level only) 11, 62 (AS Level only) | |

| | | | | | | |
|-------------------------------------|----------------------------------------------------|----|-----|----------|---------------------------------------------------------------------------------------|--------------------------------------|
| DESIGN AND TEXTILES* 9631 | 1: Fibres, Fabrics and Design (AS written) | 2h | 25% | 50% | | Not available to private candidates. |
| | 2: Practical Test (AS) | 7h | 25% | 50% | | |
| | 3: Textile Applications & Technology (A/L written) | 2h | 25% | - | Option Code | |
| | 4: A Level Coursework | - | 25% | - | A | |
| | 67: November AS Mark Carried Forward | - | 50% | - | B | |
| | | | | | C | |
| | | | | S | Components 1, 2, 3, 4 3, 4, 67 1, 2, 3, 4, 67 1, 2 (AS Level only) | |

KEY TO GCE AS & A LEVEL SYLLABUSES (in alphabetical order):

* INDICATES THAT THE SYLLABUS INCLUDES OPTIONS THAT CAN BE ENTERED AS PART OF A STAGED ASSESSMENT

| SYLLABUS NAME AND CODE | COMPONENT INFORMATION | DURATION | WEIGHTING | | OPTION CODE | NOTES |
|---------------------------------|---------------------------------------------------------------------------------------------------------------------------------------------------------------------------------------------------------------------------------------|--------------------------------------|-----------|----------|---------------------------------|------------------------------------------------------------------------------------------------|
| | | | A LEVEL | AS LEVEL | | |
| DIVINITY 9011 | 1: Prophets of the Old Testament 2: The Four Gospels 3: The Apostolic Age | 3h 3h 3h | 50% | - | | A Level only May not be taken in the same examination series as 8041. |
| | | | 50% | - | | |
| | | | 50% | - | | |
| | | | | | | |
| | Option Code | | | | Components | |
| | A | | | | 1, 2 | |
| | B | | | | 1, 3 | |
| | C | | | | 2, 3 | |
| DIVINITY 8041 | 2: The Four Gospels | 3h | - | 100% | | AS Level only May not be taken in the same examination series as 9011. |
| | | | | | | |
| | Option Code | | | | Components | |
| | Leave Blank | | | | 2 only | |
| ECONOMICS* 9708 | 11: Multiple Choice (Core) 11 21: Data Response & Essay (Core) 21 31: Multiple Choice (Supplement) 31 41: Data Response & Essays (Supplement) 41 66: June AS Mark Carried Forward 67: November AS Mark Carried Forward | 1h 1h30m 1h 2h15m - - | 20% | 40% | | |
| | | | 30% | 60% | | |
| | | | 15% | - | | |
| | | | 35% | - | | |
| | | | 50% | - | | |
| | | | 50% | - | | |
| | | | | | | |
| | Option Code | | | | Components | |
| | AX | | | | 11, 21, 31, 41 | |
| | BX | | | | 31, 41, 66 | |
| | CX | | | | 31, 41, 67 | |
| | DX | | | | 11, 21, 31, 41, 66, 67 | |
| | SX | | | | 11, 21 (AS Level only) | |
| ENGLISH LANGUAGE 8693 | 11: Passages for Comment 11 21: Composition 21 | 2h 2h | - | 50% | | AS Level only May not be taken in the same examination series as 0396, 0397 or 8695. |
| | | | - | 50% | | |
| | | | | | | |
| | Option Code | | | | Components | |
| | AX | | | | 11, 21 | |

KEY TO GCE AS & A LEVEL SYLLABUSES (in alphabetical order):

* INDICATES THAT THE SYLLABUS INCLUDES OPTIONS THAT CAN BE ENTERED AS PART OF A STAGED ASSESSMENT

| SYLLABUS NAME AND CODE | COMPONENT INFORMATION | DURATION | WEIGHTING | | OPTION CODE | NOTES |
|-----------------------------------------|------------------------------------------------------------------------------------------------------|--------------------------|-----------|----------|--------------------|------------------------------------------------------------------------------------------------------|
| | | | A LEVEL | AS LEVEL | | |
| ENVIRONMENTAL MANAGEMENT 8291 | 1: Paper 1 2: Paper 2 3: School Based Assessment 83: Coursework Mark Carried Forward | 1h30m 1h30m - - | - | 40% | | AS Level only Not available to private candidates. |
| | | | - | 40% | | |
| | | | - | 20% | Option Code | Components 1, 2, 3 1, 2, 83 |
| | | | - | 20% | | |
| FIRST LANGUAGE AFRIKAANS 8779 | 2: Reading & Writing 4: Texts | 1h45m 2h30m | - | 50% | | AS Level only May not be taken in the same examination series as 0512, 0548, 8679 or 9679. |
| | | | - | 50% | | |
| | | | - | | Option Code | Components |
| | | | - | | | |
| FIRST LANGUAGE SPANISH 8665 | 21: Reading & Writing 21 41: Texts 41 | 1h45m 2h30m | - | 50% | | AS Level only May not be taken in the same examination series as 8673, 8685 or 9719. |
| | | | - | 50% | | |
| | | | - | | Option Code | Components |
| | | | - | | | |
| FOOD STUDIES 9336 | 1: Theory 2: Practical Test 3: Unsupervised Work 83: Unsupervised Work Mark Carried Forward | 3h 2h30m - - | 50% | - | | A Level only Not available to private candidates. |
| | | | 40% | - | | |
| | | | 10% | - | Option Code | Components 1, 2, 3 1, 2, 83 |
| | | | 10% | - | | |

KEY TO GCE AS & A LEVEL SYLLABUSES (in alphabetical order):

* INDICATES THAT THE SYLLABUS INCLUDES OPTIONS THAT CAN BE ENTERED AS PART OF A STAGED ASSESSMENT

| SYLLABUS NAME AND CODE | COMPONENT INFORMATION | DURATION | WEIGHTING | | OPTION CODE | NOTES |
|--------------------------------|-------------------------------------------------------------------------|--------------------------------|-----------|----------|--------------------|-----------------------------------------------------------------------------------------|
| | | | A LEVEL | AS LEVEL | | |
| FRENCH 9716 | 1: Speaking 21: Reading & Writing 21 31: Essay 31 41: Texts 41 | 20m 1h45m 1h30m 2h30m | 20% | - | | A Level only May not be taken in the same examination series as 8670 or 8682. |
| | | | 35% | - | | |
| | | | 15% | - | Option Code | Components |
| | | | 30% | - | AX | 1, 21, 31, 41 |
| FRENCH LANGUAGE 8682 | 1: Speaking 21: Reading & Writing 21 31: Essay 31 | 20m 1h45m 1h30m | - | 30% | | AS Level only May not be taken in the same examination series as 9716. |
| | | | - | 50% | | |
| | | | - | 20% | Option Code | Components |
| | | | | | X | 1, 21, 31 |
| FRENCH LITERATURE 8670 | 41: Texts 41 | 2h30m | - | 100% | | AS Level only May not be taken in the same examination series as 9716. |
| | | | | | | |
| | | | | | Option Code | Components |
| | | | | | X | 41 only |
| FURTHER MATHEMATICS 9231 | 11: Paper 11 21: Paper 21 | 3h | 50% | - | | A Level only |
| | | 3h | 50% | - | | |
| | | | | | Option Code | Components |
| | | | | | AX | 11, 21 |
| GENERAL PAPER 8001 | 11: Paper 11 21: Paper 21 | 1h15m | - | 50% | | AS Level only |
| | | 1h30m | - | 50% | | |
| | | | | | Option Code | Components |
| | | | | | X | 11, 21 |
| GENERAL PAPER 8004 | 11: Paper 11 | 2h | - | 100% | | AS Level only |
| | | | | | | |
| | | | | | Option Code | Components |
| | | | | | X | 11 only |

Zone 2 - GCE AS & A LEVEL

KEY TO GCE AS & A LEVEL SYLLABUSES (in alphabetical order):

* INDICATES THAT THE SYLLABUS INCLUDES OPTIONS THAT CAN BE ENTERED AS PART OF A STAGED ASSESSMENT

| SYLLABUS NAME AND CODE | COMPONENT INFORMATION | DURATION | WEIGHTING | | OPTION CODE | NOTES |
|--------------------------------|----------------------------------------------------------------------------------------------------------------------------------------------------------------------------------|--------------------------|--------------------------|------------------|--------------------------------------------------|-----------------------------------------------------------------------------------------------------------------------|
| | | | A LEVEL | AS LEVEL | | |
| GEOGRAPHY* 9696 | 11: Core Geography 11 21: Advanced Physical Options 21 31: Advanced Human Options 31 66: June AS Core Mark Carried Forward 67: November AS Core Mark Carried Forward | 3h | 50% | 100% | | Components 21 and 31 are taken in the same session. |
| | | 1h30m 1h30m - - | 25% 25% 50% 50% | - - - - | Option Code AX BX CX DX SX | Components 11, 21, 31 21, 31, 66 21, 31, 67 11, 21, 31, 66, 67 11 only (AS Level only) |
| GERMAN 9717 | 1: Speaking 2: Reading & Writing 3: Essay 4: Texts | 20m | 20% | - | | A Level only May not be taken in the same examination series as 8683. |
| | | 1h45m | 35% | - | | |
| | | 1h30m | 15% | - | | |
| | | 2h30m | 30% | - | Option Code Leave Blank | Components 1, 2, 3, 4 |
| GERMAN LANGUAGE 8683 | 1: Speaking 2: Reading & Writing 3: Essay | 20m | - | 30% | | AS Level only May not be taken in the same examination series as 9717. |
| | | 1h45m | - | 50% | | |
| | | 1h30m | - | 20% | Option Code Leave Blank | Components 1, 2, 3 |
| HINDI 9687 | 2: Reading & Writing 3: Essay 4: Texts 5: Prose | 1h45m | 35% | - | | A Level only May not be taken in the same examination series as 8675 or 8687. |
| | | 1h30m | 20% | - | | |
| | | 2h30m | 35% | - | | |
| | | 45m | 10% | - | Option Code Leave Blank | Components 2, 3, 4, 5 |
| | | | | | | |

Zone 2 - GCE AS & A LEVEL

KEY TO GCE AS & A LEVEL SYLLABUSES (in alphabetical order):

* INDICATES THAT THE SYLLABUS INCLUDES OPTIONS THAT CAN BE ENTERED AS PART OF A STAGED ASSESSMENT

| SYLLABUS NAME AND CODE | COMPONENT INFORMATION | DURATION | WEIGHTING | | OPTION CODE | NOTES |
|---------------------------------|----------------------------------|----------------|-----------|----------|--------------------|----------------------------------------------------------------------------------|
| | | | A LEVEL | AS LEVEL | | |
| HINDI LANGUAGE 8687 | 2: Reading & Writing 3: Essay | 1h45m 1h30m | - | 70% | | AS Level only May not be taken in the same examination series as 9687. |
| | | | - | 30% | | |
| | | | | | Option Code | Components |
| | | | | | SB | 2, 3 |
| HINDI LITERATURE 8675 | 4: Texts | 2h30m | - | 100% | | AS Level only May not be taken in the same examination series as 9687. |
| | | | | | | |
| | | | | | Option Code | Components |
| | | | | | Leave Blank | 4 only |
| HINDUISM 9014 | 1: Paper 1 2: Paper 2 | 3h 3h | 50% | - | | A Level only May not be taken in the same examination series as 8058. |
| | | | 50% | - | | |
| | | | | | Option Code | Components |
| | | | | | Leave Blank | 1, 2 |
| HINDUISM 8058 | 1: Paper 1 | 3h | - | 100% | | AS Level only May not be taken in the same examination series as 9014. |
| | | | | | | |
| | | | | | Option Code | Components |
| | | | | | Leave Blank | 1 only |

KEY TO GCE AS & A LEVEL SYLLABUSES (in alphabetical order):

* INDICATES THAT THE SYLLABUS INCLUDES OPTIONS THAT CAN BE ENTERED AS PART OF A STAGED ASSESSMENT

| SYLLABUS NAME AND CODE | COMPONENT INFORMATION | DURATION | WEIGHTING | | OPTION CODE | NOTES | |
|-------------------------|----------------------------------------------|----------|-----------|----------|-------------|-----------------------------------------------------------------------------------------------------------------------------------------------|--------------------|
| | | | A LEVEL | AS LEVEL | | | |
| HISTORY* 9697 | 11: Paper 11 | 3h | 50% | 100% | | AS Level candidates must study one area and period of History while A Level candidates must study two different areas and periods of History. | |
| | 21: Paper 21 | 3h | 50% | 100% | | | |
| | 31: Paper 31 | 3h | 50% | 100% | | | |
| | 41: Paper 41 | 3h | 50% | 100% | | | |
| | 51: Paper 51 | 3h | 50% | 100% | | | |
| | 61: June Paper 1 AS Mark Carried Forward | - | 50% | - | | | |
| | 63: June Paper 3 AS Mark Carried Forward | - | 50% | - | | | |
| | 65: June Paper 5 AS Mark Carried Forward | - | 50% | - | | | |
| | 66: June Paper 6 AS Mark Carried Forward | - | 50% | - | | | |
| | 71: November Paper 1 AS Mark Carried Forward | - | 50% | - | | | |
| | 72: November Paper 2 AS Mark Carried Forward | - | 50% | - | | | |
| | 73: November Paper 3 AS Mark Carried Forward | - | 50% | - | | | |
| | 74: November Paper 4 AS Mark Carried Forward | - | 50% | - | | | |
| | 75: November Paper 5 AS Mark Carried Forward | - | 50% | - | | | |
| | | | | | | | Option Code |
| | | | | | | | AX |
| | | | | | | | XA |
| | | | | | | | BX |
| | | | | | | | XB |
| | | | | | | | CX |
| | | | | | XC | | |
| | | | | | DX | | |
| | | | | | XD | | |
| | | | | | FX | | |
| | | | | | XF | | |
| | | | | | GX | | |
| | | | | | XG | | |
| | | | | | HX | | |
| | | | | | XH | | |
| | | | | | IX | | |
| | | | | | XI | | |
| | | | | | JX | | |
| | | | | | XJ | | |
| | | | | | LX | | |
| | | | | | XL | | |
| | | | | | NX | | |
| | | | | | OX | | |
| | | | | | PX | | |
| | | | | | QX | | |
| | | | | | RX | | |
| | | | | | SX | | |

(Continued)

KEY TO GCE AS & A LEVEL SYLLABUSES (in alphabetical order):

* INDICATES THAT THE SYLLABUS INCLUDES OPTIONS THAT CAN BE ENTERED AS PART OF A STAGED ASSESSMENT

| SYLLABUS NAME AND CODE | COMPONENT INFORMATION | DURATION | WEIGHTING | | OPTION CODE | NOTES |
|----------------------------------------|-------------------------------------------------|-----------------------|-------------|-------------------|----------------------------------------------------|-------------------------------------------------------------------------------------------------------------------------------------------------------------------------------------------------------------------------|
| | | | A LEVEL | AS LEVEL | | |
| HISTORY* 9697 (Continued) | | | | | SA SB SC SD SE TX UX VX WX | 11 only (AS Level only) 21 only (AS Level only) 31 only (AS Level only) 41 only (AS Level only) 51 only (AS Level only) 41, 61, 63, 65, 66 41, 71, 72, 73, 75 51, 61, 63, 66 51, 71, 72, 73, 74 |
| ISLAMIC STUDIES 9013 | 1: Paper 1 2: Paper 2 | 3h 3h | 50% 50% | - - | | A Level only May not be taken in the same examination series as 2056, 2058 or 8053. |
| ISLAMIC STUDIES 8053 | 1: Paper 1 | 3h | - | 100% | | AS Level only May not be taken in the same examination series as 2056, 2058 or 9013. |
| JAPANESE LANGUAGE 8281 | 1: Speaking 2: Reading & Writing 3: Essay | 20m 1h45m 1h30m | - - - | 30% 50% 20% | | AS Level only Components 1, 2, 3 |
| | | | | | Option Code Leave Blank | Components 1 only |

KEY TO GCE AS & A LEVEL SYLLABUSES (in alphabetical order):

* INDICATES THAT THE SYLLABUS INCLUDES OPTIONS THAT CAN BE ENTERED AS PART OF A STAGED ASSESSMENT

| SYLLABUS NAME AND CODE | COMPONENT INFORMATION | DURATION | WEIGHTING | | OPTION CODE | NOTES |
|---------------------------------------------------|---------------------------------------------------|----------|-----------|-----------|--------------------|-----------------------------------------------------------------------------------------------------------------------------------------------------------------------------------------------------------------------------------------------------------------------------------------------------------------------------------|
| | | | A LEVEL | AS LEVEL | | |
| LANGUAGE AND LITERATURE IN ENGLISH 8695 | 21: Composition 21 | 2h | - | 50% | | AS Level only May not be taken in the same examination series as 0396, 0397, 8693 or 9695. |
| | 91: Poetry, Prose, Drama 91 | 2h | - | 50% | | |
| LAW* 9084 | 11: Paper 11 | 1h30m | 30% | 60% | | Components 21, 91 |
| | 21: Paper 21 | 1h30m | 20% | 40% | | |
| | 31: Paper 31 | 1h30m | 25% | - | Option Code | |
| | 41: Paper 41 | 1h30m | 25% | - | AX | |
| | 66: June Mark Carried Forward | - | 50% | - | BX | |
| | 67: November Mark Carried Forward | - | 50% | - | CX | |
| | | | | | DX | |
| | | | | SX | | |
| LITERATURE IN ENGLISH* 9695 | 31: Poetry & Prose 31 | 2h | 25% | 50% | | May not be taken in the same examination series as 0397 or 8695. Options CX, FX, IX and LX are not available to private candidates. Component 8 is only available to Centres which have registered in advance by submitting a full coursework proposal to Cambridge in writing by December in the first year of the course. |
| | 41: Drama 41 | 2h | 25% | 50% | | |
| | 51: Shakespeare & Other Pre-20th Century Texts 51 | 2h | 25% | - | | |
| | 61: 20th Century Texts 61 | 2h | 25% | - | | |
| | 71: Comment & Appreciation 71 | 2h | 25% | - | | |
| | 8: Coursework | - | 25% | - | | |
| | 66: June AS Mark Carried Forward | - | 50% | - | | |
| | 67: November AS Mark Carried Forward | - | 50% | - | | |
| | 88: Paper 8 Mark Carried Forward | - | 25% | - | | |
| | | | | | Option Code | |
| | | | | | AX | |
| | | | | BX | | |
| | | | | CX | | |
| | | | | DX | | |
| | | | | EX | | |
| | | | | FX | | |

(Continued)

Zone 2 - GCE AS & A LEVEL

KEY TO GCE AS & A LEVEL SYLLABUSES (in alphabetical order):

* INDICATES THAT THE SYLLABUS INCLUDES OPTIONS THAT CAN BE ENTERED AS PART OF A STAGED ASSESSMENT

| SYLLABUS NAME AND CODE | COMPONENT INFORMATION | DURATION | WEIGHTING | | OPTION CODE | NOTES |
|-----------------------------------------------|------------------------------------------------------------------|----------|-----------|----------|------------------------|--------------------------------------------------------------------|
| | | | A LEVEL | AS LEVEL | | |
| LITERATURE IN ENGLISH* 9695 (Continued) | | | | | GX | 51, 61, 67 |
| | | | | | HX | 51, 71, 67 |
| | | | | | IX | 51, 8, 67 |
| | | | | | JX | 31, 41, 51, 61, 66, 67 |
| | | | | | KX | 31, 41, 51, 71, 66, 67 |
| | | | | | LX | 31, 41, 51, 8, 66, 67 |
| | | | | | MX | 31, 41, 51, 88 |
| | | | | SX | 31, 41 (AS Level only) | |
| MARATHI 9688 | 2: Reading & Writing | 1h45m | 35% | - | | A Level only |
| | 3: Essay | 1h30m | 20% | - | | May not be taken in the same examination series as 8688. |
| | 4: Texts | 2h30m | 35% | - | | |
| | 5: Prose | 45m | 10% | - | | |
| | | | | | | Option Code Leave Blank |
| MARATHI LANGUAGE 8688 | 2: Reading & Writing | 1h45m | - | 70% | | AS Level only |
| | 3: Essay | 1h30m | - | 30% | | May not be taken in the same examination series as 9688. |
| | | | | | | Option Code Leave Blank |
| MATHEMATICS* 9709 (Continued) | 11: Paper 11 | 1h45m | 30% | 60% | | Option S1 cannot be used as a part of Staged Assessment. |
| | 21: Paper 21 | 1h15m | - | 40% | | |
| | 31: Paper 31 | 1h45m | 30% | - | | |
| | 41: Paper 41 | 1h15m | 20% | 40% | | |
| | 51: Paper 51 | 1h15m | 20% | - | | |
| | 61: Paper 61 | 1h15m | 20% | 40% | | |
| | 71: Paper 71 | 1h15m | 20% | - | | |
| | 64: June AS Paper 1 + Paper 4 Option Mark Carried Forward | - | 50% | - | | |
| | 66: June AS Paper 1 + Paper 6 Option Mark Carried Forward | - | 50% | - | | |
| | 74: November AS Paper 1 + Paper 4 Option Mark Carried Forward | - | 50% | - | | |
| | | | | | | Option Code AX BX CX DX EX FX GX HX |

KEY TO GCE AS & A LEVEL SYLLABUSES (in alphabetical order):

* INDICATES THAT THE SYLLABUS INCLUDES OPTIONS THAT CAN BE ENTERED AS PART OF A STAGED ASSESSMENT

| SYLLABUS NAME AND CODE | COMPONENT INFORMATION | DURATION | WEIGHTING | | OPTION CODE | NOTES |
|--------------------------------------------|------------------------------------------------------------------|----------|-----------|----------|----------------------------------------------------|------------------------------------------------------------------------------------------------------------------------------------------------------------------------------------------------------------|
| | | | A LEVEL | AS LEVEL | | |
| MATHEMATICS* 9709 (Continued) | 76: November AS Paper 1 + Paper 6 Option Mark Carried Forward | - | 50% | - | IX JX KX LX MX NX S1 S2 S3 | 31, 41, 76 31, 51, 74 31, 71, 76 11, 31, 41, 61, 64, 66, 74, 76 11, 31, 41, 51, 64, 74 11, 31, 61, 71, 66, 76 11, 21 (AS Level only) 11, 41 (AS Level only) 11, 61 (AS Level only) |

| | | | | | | |
|-----------------------|---------------------------------------------------------------------------------------------------------------------------------------------------------------------------------------|----------------------------------|-----------------------------------------------|-------------------------------------|--------------------|--------------------------------------------------------------------------------------------------|
| MUSIC* 9703 | 1: Listening 2: Practical Musicianship 3: Performing 4: Composing 5: Investigation and Report 66: June AS Mark Carried Forward 67: November AS Mark Carried Forward | 2h - - - - - - | 25% 25% 25% 25% 25% 50% 50% | 50% 50% - - - - - | | Not available to private candidates. May not be taken in the same examination series as 8663. |
| | | | | | Option Code | Components |
| | | | | | A | 1, 2, 3, 4 |
| | | | | | B | 1, 2, 3, 5 |
| | | | | | C | 1, 2, 4, 5 |
| | | | | | D | 3, 4, 66 |
| | | | | | E | 3, 5, 66 |
| | | | | | F | 4, 5, 66 |
| | | | | | G | 1, 2, 3, 4, 66 |
| | | | | | H | 1, 2, 3, 5, 66 |
| | | | | | I | 1, 2, 4, 5, 66 |
| | | | | | J | 3, 4, 67 |
| | | | | | K | 3, 5, 67 |
| | | | | | L | 4, 5, 67 |
| | | | | | M | 1, 2, 3, 4, 67 |
| | | | | | N | 1, 2, 3, 5, 67 |
| | | | | | O | 1, 2, 4, 5, 67 |
| | | | | | S | 1, 2 (AS Level only) |

KEY TO GCE AS & A LEVEL SYLLABUSES (in alphabetical order):

* INDICATES THAT THE SYLLABUS INCLUDES OPTIONS THAT CAN BE ENTERED AS PART OF A STAGED ASSESSMENT

| SYLLABUS NAME AND CODE | COMPONENT INFORMATION | DURATION | WEIGHTING | | OPTION CODE | NOTES |
|------------------------------------|------------------------------------------|----------|-----------|----------|-------------------------------------------------------------------------------------|---------------------------------------------------------------------------------------------------------------------------------|
| | | | A LEVEL | AS LEVEL | | |
| MUSIC 8663 | 1: Listening | 2h | - | 50% | | AS Level only Not available to private candidates. May not be taken in the same examination series as 9703. |
| | 6: Investigation and Report | - | - | 50% | | |
| PHYSICAL EDUCATION* 9396 | 11: Written Paper 11 | 2h30m | 35% | 70% | | Not available to private candidates. |
| | 2: AS Coursework | - | 15% | 30% | | |
| | 31: Written Paper 31 | 2h30m | 35% | - | Option Code AX CX DX SX | Components 11, 2, 31, 4 31, 4, 67 11, 2, 31, 4, 67 11, 2 (AS Level only) |
| | 4: A2 Coursework | - | 15% | - | | |
| | 67: November AS Mark Carried Forward | - | 50% | - | | |
| | | | | | | |
| PHYSICS* 9702 | 11: Multiple Choice 11 | 1h | 15% | 31% | | |
| | 21: AS Structured Questions 21 | 1h | 23% | 46% | | |
| | 31: Advanced Practical Skills 31 | 2h | 12% | 23% | Option Code AX BX CX DX S1 | Components 11, 21, 31, 41, 51 41, 51, 66 41, 51, 67 11, 21, 31, 41, 51, 66, 67 11, 21, 31 (AS Level only) |
| | 41: A2 Structured Questions 41 | 2h | 38% | - | | |
| | 51: Planning, Analysis and Evaluation 51 | 1h15m | 12% | - | | |
| | 66: June AS Mark Carried Forward | - | 50% | - | | |
| | 67: November AS Mark Carried Forward | - | 50% | - | | |
| | | | | | | |
| PSYCHOLOGY* 9698 | 11: Core Studies 11 | 1h30m | 25% | 50% | | |
| | 21: Core Studies 21 | 1h30m | 25% | 50% | | |
| | 31: Specialist Studies 31 | 3h | 50% | - | Option Code AX BX CX DX SX | Components 11, 21, 31 31, 66 31, 67 11, 21, 31, 66, 67 11, 21 (AS Level only) |
| | 66: June AS Mark Carried Forward | - | 50% | - | | |
| | 67: November AS Mark Carried Forward | - | 50% | - | | |

KEY TO GCE AS & A LEVEL SYLLABUSES (in alphabetical order):

* INDICATES THAT THE SYLLABUS INCLUDES OPTIONS THAT CAN BE ENTERED AS PART OF A STAGED ASSESSMENT

| SYLLABUS NAME AND CODE | COMPONENT INFORMATION | DURATION | WEIGHTING | | OPTION CODE | NOTES |
|-----------------------------------|--------------------------------------|----------|-----------|----------|--------------------------------------------------|---------------------------------------------------------------------------|
| | | | A LEVEL | AS LEVEL | | |
| SOCIOLOGY* 9699 | 11: Essay 11 | 1h30m | 25% | 50% | | |
| | 21: Data Response 21 | 1h30m | 25% | 50% | | |
| | 31: Essay 31 | 3h | 50% | - | Option Code | Components |
| | 66: June AS Mark Carried Forward | - | 50% | - | AX | 11, 21, 31 |
| | 67: November AS Mark Carried Forward | - | 50% | - | BX CX DX SX | 31, 66 31, 67 11, 21, 31, 66, 67 11, 21 (AS Level only) |
| SPANISH 9719 | 1: Speaking | 20m | 20% | - | | A Level only |
| | 21: Reading & Writing 21 | 1h45m | 35% | - | | May not be taken in the same examination series as 8665, 8673 or 8685. |
| | 31: Essay 31 | 1h30m | 15% | - | | |
| | 41: Texts 41 | 2h30m | 30% | - | | |
| | | | | | Option Code | Components |
| | | | | | AX | 1, 21, 31, 41 |
| SPANISH LANGUAGE 8685 | 1: Speaking | 20m | - | 30% | | AS Level only |
| | 21: Reading & Writing 21 | 1h45m | - | 50% | | May not be taken in the same examination series as 8665 or 9719. |
| | 31: Essay 31 | 1h30m | - | 20% | | |
| | | | | | Option Code | Components |
| | | | | | X | 1, 21, 31 |
| SPANISH LITERATURE 8673 | 41: Texts 41 | 2h30m | - | 100% | | AS Level only |
| | | | | | | May not be taken in the same examination series as 8665 or 9719. |
| | | | | | Option Code | Components |
| | | | | | X | 41 only |

KEY TO GCE AS & A LEVEL SYLLABUSES (in alphabetical order):

* INDICATES THAT THE SYLLABUS INCLUDES OPTIONS THAT CAN BE ENTERED AS PART OF A STAGED ASSESSMENT

| SYLLABUS NAME AND CODE | COMPONENT INFORMATION | DURATION | WEIGHTING | | OPTION CODE | NOTES |
|---------------------------------|--------------------------------------------------------------------------------------------------------------------------------------------------------------------------------------------------------|--------------------------------------------|-----------|----------|--------------------|----------------------------------------------------------------------------------|
| | | | A LEVEL | AS LEVEL | | |
| TAMIL 9689 | 2: Reading & Writing 3: Essay 4: Texts 5: Prose | 1h45m 1h30m 2h30m 45m | 35% | - | | A Level only May not be taken in the same examination series as 8689. |
| | | | 20% | - | | |
| | | | 35% | - | Option Code | Components |
| | | | 10% | - | Leave Blank | 2, 3, 4, 5 |
| TAMIL LANGUAGE 8689 | 2: Reading & Writing 3: Essay | 1h45m 1h30m | - | 70% | | AS Level only May not be taken in the same examination series as 9689. |
| | | | - | 30% | | |
| | | | | | Option Code | Components |
| | | | | | Leave Blank | 2, 3 |
| TELGUGU 9690 | 2: Reading & Writing 3: Essay 4: Texts 5: Prose | 1h45m 1h30m 2h30m 45m | 35% | - | | A Level only May not be taken in the same examination series as 8690. |
| | | | 20% | - | | |
| | | | 35% | - | Option Code | Components |
| | | | 10% | - | Leave Blank | 2, 3, 4, 5 |
| TELGUGU LANGUAGE 8690 | 2: Reading & Writing 3: Essay | 1h45m 1h30m | - | 70% | | AS Level only May not be taken in the same examination series as 9690. |
| | | | - | 30% | | |
| | | | | | Option Code | Components |
| | | | | | Leave Blank | 2, 3 |
| THINKING SKILLS* 9694 | 11: Problem Solving M/C 11 21: Critical Thinking 21 31: Problem Analysis and Solution 31 41: Applied Reasoning 41 66: June AS Mark Carried Forward 67: November AS Mark Carried Forward | 1h30m 1h45m 1h30m 1h30m - - | 25% | 50% | | Components |
| | | | 25% | 50% | | |
| | | | 25% | - | | |
| | | | 25% | - | | |
| | | | 50% | - | | |
| | | | 50% | - | | |
| | | | | | Option Code | Components |
| | | | | | AX | 11, 21, 31, 41 |
| | | | | | BX | 31, 41, 66 |
| | | | | | CX | 31, 41, 67 |
| | | | | | DX | 11, 21, 31, 41, 66, 67 |
| | | | | | SX | 11, 21 (AS Level only) |

Zone 2 - GCE AS & A LEVEL

KEY TO GCE AS & A LEVEL SYLLABUSES (in alphabetical order):

* INDICATES THAT THE SYLLABUS INCLUDES OPTIONS THAT CAN BE ENTERED AS PART OF A STAGED ASSESSMENT

| SYLLABUS NAME AND CODE | COMPONENT INFORMATION | DURATION | WEIGHTING | | OPTION CODE | NOTES |
|-----------------------------|-----------------------------------------------------|----------|-----------|----------|-------------|---------------------------------------------------------------------------|
| | | | A LEVEL | AS LEVEL | | |
| TRAVEL AND TOURISM* 9395 | 1: Core Paper | 2h30m | 35% | 70% | | Not available to private candidates. |
| | 2: Planning & Managing a Tourism Event | - | 15% | 30% | | |
| | 3: International Business & Leisure Travel Services | 1h30m | 25% | - | Option Code | |
| | 4: Specialised Tourism | 1h30m | 25% | - | A | |
| | 66: June AS Mark Carried Forward | - | 50% | - | B | |
| | 67: November AS Mark Carried Forward | - | 50% | - | C | |
| URDU 9676 | 2: Reading & Writing | 1h45m | 35% | - | | A Level only May not be taken in the same examination series as 8686. |
| | 3: Essay | 1h30m | 20% | - | | |
| | 4: Texts | 2h30m | 35% | - | | |
| | 5: Prose | 45m | 10% | - | | |
| | | | | | Option Code | |
| | | | | | Leave Blank | |
| URDU LANGUAGE 8686 | 2: Reading & Writing | 1h45m | - | 70% | | AS Level only May not be taken in the same examination series as 9676. |
| | 3: Essay | 1h30m | - | 30% | | |
| | | | | | Option Code | |
| | | | | SB | Components | 2, 3 |

KEY TO AICE (HC) SYLLABUSES (in alphabetical order):

| SYLLABUS NAME AND CODE | COMPONENT INFORMATION | DURATION | WEIGHTING | OPTION CODE | NOTES |
|----------------------------|-----------------------------|----------|-----------|------------------|------------------------------------------------------------------------|
| ENGLISH LANGUAGE 0396 | 11: Composition 11 | 2h | 100% | | May not be taken in the same examination series as 8693 or 8695. |
| | | | | Option Code X | |
| ENGLISH LITERATURE 0397 | 11: Poetry, Prose, Drama 11 | 2h | 100% | | May not be taken in the same examination series as 8693, 8695 or 9695. |
| | | | | Option Code X | |

CAMBRIDGE INTERNATIONAL LEVEL 3 PRE-U CERTIFICATE IN GLOBAL PERSPECTIVES & INDEPENDENT RESEARCH (PRE-U GPR)

The Cambridge Pre-U Certificate in Global Perspectives and Independent Research (GPR) seeks to add value to post-16 programmes in terms of coherence, depth and breadth, through:

- Expanding creative, critical and responsible awareness through the tackling of global issues in Global Perspectives
- Encouraging focused personal exploration and increased depth of study through the Independent Research Report

GPR is designed as a two-year course with the Independent Research Report growing out of the skills introduced and developed as part of the Global Perspectives course. There are four components in total to be taken for GPR:

| | | |
|-----------------------------------------|-----------------------------------------------------------------------------------------|---------------------------------------|
| 01 – Examination | 1½ hour written paper | Global Perspectives Components |
| 02 – Essay | 1,500 word essay | |
| 03 – Presentation | 15 minute presentation based on pre-release material | |
| 04 – Independent Research Report | Written report, maximum 5000 words. This is internally marked and externally moderated. | |

The Global Perspectives and Independent Research qualification can be taken either in a single examination (Linear Assessment), or as a Staged Assessment by taking the three Global Perspectives components in the first year, and taking the Independent Research Report in the second year.

| | Year 1 | Year 2 |
|--------------------------|--------------------------------------------------|-------------------------------------------------------------------------------------------------------------------------------------------|
| Staged Assessment | Global Perspectives Only (9777 option code B) | IRR only (carry forward earlier GP mark) (9777 option code C – from previous June) OR (9777 option code F – from previous November) |
| Linear Assessment | - | 9777 option code A |

Candidates who wish to improve their performance on Global Perspectives in the second year may take all three components again when submitting the Independent Research Report. However, only the most recent result will count towards certification. Candidates who wish to improve their performance on Global Perspectives after they have taken the Independent Research Report should enter for Option D.

Advanced International Certificate of Education Diploma (AICE Diploma)

Centres entering for the Pre-U Global Perspectives & Research qualification should note that this qualification will be included in the AICE Diploma, as part of Group 4: Research Projects. Please note that entries for option code 'B' will not be counted towards the AICE Diploma as this represents the first stage of the Pre-U GPR and candidates will not have received a Pre-U GPR grade.

For the procedures on how to enter candidates for the Advanced International Certificate of Education Diploma (AICE Diploma) please refer to page 90 of this booklet.

Pre-U Certificate in Global Perspectives & Independent Research – Submission of Entries

The procedures explained on pages 3 to 24 should be followed. Please note that all examination entries for IGCSE, O Level, AS & A Level and Cambridge Pre-U qualifications must be submitted on the same entry form.

Pre-U Certificate in Global Perspectives & Independent Research Syllabus in November 2011

Find below the key to the Cambridge International Level 3 Pre-U Certificate in Global Perspectives and Independent Research Report.

KEY TO CAMBRIDGE INTERNATIONAL LEVEL 3 PRE-U CERTIFICATE IN GLOBAL PERSPECTIVES & INDEPENDENT RESEARCH:

| SYLLABUS NAME AND CODE | COMPONENT INFORMATION | DURATION | WEIGHTING | OPTION CODE | NOTES | |
|----------------------------------------------------|-----------------------------------------------------------|----------|-----------|----------------------|----------------------------------------------------------------------------------------------|---------------------|
| GLOBAL PERSPECTIVES & INDEPENDENT RESEARCH 9777 | 1: Global Perspectives Paper 1 | 1h30m | 12.5% | | Not available to private candidates. Option B cannot be used toward the AICE Group Award. | |
| | 2: Global Perspectives Paper 2 (Essay) | - | 15% | | | |
| | 3: Global Perspectives Paper 3 (Presentation) | 15m | 22.5% | | | |
| | 4: Independent Research Project | - | 50% | | | |
| | 81: Written Paper 1 Mark Carried Forward From June | - | 12.5% | | | |
| | 82: Essay Paper 2 Mark Carried Forward From June | - | 15% | | | |
| | 83: Presentation Paper 3 Mark Carried Forward From June | - | 22.5% | | | |
| | 84: IRR Paper 4 Mark Carried Forward | - | 50% | | | |
| | 91: Written Paper Mark Carried Forward From November | - | 12.5% | | | |
| | 92: Essay Paper Mark Carried Forward From November | - | 15% | | | |
| | 93: Presentation Paper Mark Carried Forward From November | - | 22.5% | | | |
| | | | | | | Option Codes |
| | | | | | | A |
| | | | | B | | |
| | | | | C | | |
| | | | | D | | |
| | | | | F | | |
| | | | | Components | | |
| | | | | 1, 2, 3, 4 | | |
| | | | | 1, 2, 3 | | |
| | | | | 4, 81, 82, 83 | | |
| | | | | 1, 2, 3, 84 | | |
| | | | | 4, 91, 92, 93 | | |

Zone 2 - CAMBRIDGE INTERNATIONAL LEVEL 3 PRE-U CERTIFICATE IN
GLOBAL PERSPECTIVES & INDEPENDENT RESEARCH

**INSTRUCTIONS FOR THE SUBMISSION OF ENTRIES FOR THE
ADVANCED INTERNATIONAL CERTIFICATE OF EDUCATION DIPLOMA
NOVEMBER 2011**

1. Introduction

The AICE (Advanced International Certificate of Education) Diploma is a Group Award, in which candidates are required to reach certain standards in the study of subjects drawn from the following three curriculum areas:

- Mathematics and Science (Group 1);
- Languages (Group 2);
- Arts and Humanities (Group 3)

While the main component of the AICE Diploma is the GCE AS & A Level qualification, Centres who have access to Pre-U Global Perspectives & Independent Research (Pre-U GPR) should note that this qualification will also be included. In addition, AICE Half Credit subjects are available in English Language and English Literature.

To obtain an AICE Diploma, candidates will be required:

- To be entered for the award,
- To obtain at least six credits, and
- To obtain at least one credit in each of the three curriculum groups.

2. AICE Diploma Entry Requirements

All candidates wishing to receive an AICE Diploma must be entered for the award, by including the entry code 'ADIP' in addition to the syllabus and option codes for the subjects they will be entering in that session. This entry code should be added in the same manner as an additional syllabus code. An example of how to add an AICE entry using the Final Entry Form can be found on the entry form itself, and CAMEO users will find the 'ADIP' entry code at the bottom of the list of available syllabuses.

IMPORTANT: Failure to include the 'ADIP' entry code in the candidate entry will prevent an AICE Diploma certificate from being issued. GCE, Pre-U GPR and/or AICE Half Credit certificates will still be issued as normal.

Previous Entry Details must also be submitted for all candidates who require results achieved in previous examinations to be included in the award of the AICE Diploma (see section 5).

3. Credit System

The full AICE Diploma will be awarded on the basis of the following points system:

- An A Level will count as a double credit in the AICE programme.
- A Level 3 Certificate in Pre-U GPR will count as a double credit in the AICE programme. Entries for option code 'B' will not be counted towards the Diploma as this represents the first stage of the Pre-U GPR and candidates will not have received a final grade.
- An AS Level will count as a single credit in the AICE programme.
- An AICE Half Credit will count as half a credit in the AICE programme. Please note that as these subjects are only worth a half-credit, they cannot be used to fulfil the one credit in a group requirement.

The following combinations are therefore all valid:

| A Level / Pre-U GPR (2 credits each) | AS Level (1 credit each) | AICE Half-Credit |
|-------------------------------------------------|-------------------------------------|-------------------------|
| 3 | 0 | 0 |
| 2 | 2 | 0 |
| 2 | 1 | 2 |
| 1 | 4 | 0 |
| 1 | 3 | 2 |
| 0 | 6 | 0 |
| 0 | 5 | 2 |

However, candidates may not count two or more subjects with identical titles or common question papers from AICE Half Credit and/or GCE AS & A Level. This means, among other exclusions, that a candidate may not count an AS Level and an A Level in the same subject, unless they are entering for different papers in 9697 History. In all such cases, the best result outcome for the candidate will be applied.

4. The Four Groups of Syllabuses

All AICE Half Credit and GCE AS & A Level qualifications can count towards the AICE Diploma.

The four Groups of Syllabuses are the following:

- Group 1: Mathematics and Science
- Group 2: Languages
- Group 3: Arts and Humanities
- Group 4: Research Projects – owing to their nature, research projects do not count towards fulfilling the AICE Diploma curriculum group criteria but do count towards the credits.

Please note that the following list contains all syllabuses available for AICE qualification in both the June and November exam series – please check the AS & A Level and Pre-U GPR syllabus lists to confirm the availability of each subject for the November 2011 series.

| Group 1 - Maths & Science | Group 2 - Languages | Group 3 - Arts & Humanities |
|-----------------------------------------------------------|-----------------------------------------|-----------------------------------------|
| 8291 Environmental Management | 0396 English Language (Half-Credit)* | 0397 English Literature (Half-Credit)* |
| 8780 Physical Science | 8281 Japanese Language | 8001 General Paper |
| 9231 Further Mathematics | 8665 First Language Spanish | 8004 General Paper |
| 9396 Physical Education*** | 8679 Afrikaans Language | 8041 Divinity |
| 9691 Computing | 8680 Arabic Language | 8053 Islamic Studies |
| 9693 Marine Science | 8681 Chinese Language | 8058 Hinduism |
| 9694 Thinking Skills*** | 8682 French Language | 8663 Music |
| 9698 Psychology*** | 8683 German Language | 8669 Chinese Literature |
| 9700 Biology | 8684 Portuguese Language | 8670 French Literature |
| 9701 Chemistry | 8685 Spanish Language | 8672 Portuguese Literature |
| 9702 Physics | 8686 Urdu Language | 8673 Spanish Literature |
| 9705 Design & Technology | 8687 Hindi Language | 8675 Hindi Literature |
| 9709 Mathematics | 8688 Marathi Language | 8695 Language & Literature in English** |
| 9713 Applied Information & Communication Technology | 8689 Tamil Language | 9011 Divinity |
| | 8690 Telugu Language | 9013 Islamic Studies |
| | 8693 English Language | 9014 Hinduism |
| | 8695 Language & Literature in English** | 9084 Law |
| | 8779 First Language Afrikaans | 9274 Classical Studies |
| | 9676 Urdu | 9336 Food Studies |
| | 9679 Afrikaans | 9395 Travel & Tourism |
| | 9680 Arabic | 9396 Physical Education*** |
| | 9687 Hindi | 9631 Design & Textiles |
| | 9688 Marathi | 9694 Thinking Skills*** |
| | 9689 Tamil | 9695 Literature in English |
| | 9690 Telugu | 9696 Geography |
| | 9715 Chinese | 9697 History |
| | 9716 French | 9698 Psychology*** |
| | 9717 German | 9699 Sociology |
| | 9718 Portuguese | 9703 Music |
| | 9719 Spanish | 9704 Art & Design |
| | | 9706 Accounting |
| | | 9707 Business Studies |
| | | 9708 Economics |
| Group 4 - Research Projects | | |
| 9777 Pre-U Global Perspectives & Independent Research**** | | |

* 0396 English Language and 0397 English Literature are each worth half an AICE credit – candidates must also take a full-credit subject in each group in order to fulfil the syllabus group criteria.

** 8695 Language & Literature in English can be taken as a qualifying subject in either Group 2 or Group 3. This subject can only be used to fulfil the criteria for a single subject group.

*** 9396 Physical Education, 9694 Thinking Skills and 9698 Psychology can be all taken as a qualifying subject in either Group 1 or Group 3. Each subject can only be used to fulfil the criteria for a single subject group.

**** Option 'B' in 9777 Global Perspectives & Independent Research cannot be counted for AICE Diploma qualification purposes.

5. Taking the AICE Diploma over more than one examination series

Candidates are allowed to accumulate the results to be used over more than one examination series. However:

- Results may not be used if they are more than 13 months old. This means, for example, that candidates for the AICE Diploma in November 2011 may use results gained in November 2010 and/or June 2011 as well as in November 2011, but may not use results from an earlier examination series.
- Multi-series candidates must make their ADIP entry (see section 2) in their final examination series. To enable Cambridge to track such candidates, Centres are required to state candidates' previous series Centre and candidate numbers. For example, in the second series, Centres will state the candidate's details from the first exam series; in any third series the candidate's details from the second series would be required. If Centres do not provide this information and require a change in the way the AICE Diploma result is calculated after results issue, the Centre will need to apply for a Results Enquiry Service 6.

6. Retaking the AICE Diploma

Candidates are able to retake the AICE Diploma, providing all the results counting towards the retake fall within a 13-month period. The retake of individual subjects is also allowed. In all such cases, the best result outcome for the candidate will be applied.

7. Confirmation of Entry

Statements of Entry will indicate whether the syllabus entries have satisfied the AICE Diploma entry criteria. The following messages may be printed:

| Statement to be shown on the Statement of Entry | AICE Diploma Entry Code Supplied? | Entry Syllabus Grouping Rules and Credit Rating Rules Satisfied? | Previous Entry Details Provided? |
|-----------------------------------------------------------------------------------------------------------------------------------------|-----------------------------------|------------------------------------------------------------------|----------------------------------|
| No Message | No | No | No |
| "Entry criteria for AICE Diploma not met in this session. Please check whether previous entry details should have been supplied." | Yes | No | No |
| "Entry criteria for AICE Diploma fully met in this session." | Yes | Yes | No |
| "This candidate has met the entry criteria but has not been entered for the AICE Diploma." | No | Yes | No |
| No Message | No | No | Yes |
| "Entry criteria for AICE Diploma not met in this and available previous sessions." | Yes | No | Yes |
| "This candidate has met the entry criteria in this and available previous sessions but has not been entered for the AICE Diploma." | No | Yes | Yes |
| "Entry criteria for AICE Diploma fully met in this and available previous sessions." | Yes | Yes | Yes |
| "Entry criteria for AICE Diploma not met because previous sessions results mean that award rules cannot be satisfied by current entry." | Yes | Yes | Yes |

8. Calculating the award in the AICE Diploma

Candidates who meet the requirements of the AICE Diploma will be awarded a Pass, Merit or Distinction. To determine which, they are allocated points according to the grades they achieve in each qualifying subject as follows:

| Grade achieved in subject | Points for Double Credit (A Level) study | Points for Full Credit (AS Level) study | Points for AICE Half-Credit study |
|---------------------------|------------------------------------------|-----------------------------------------|-----------------------------------|
| A* | 140 | | |
| A | 120 | 60 | 30 |
| B | 100 | 50 | 25 |
| C | 80 | 40 | 20 |
| D | 60 | 30 | 15 |
| E | 40 | 20 | 10 |

Candidates entering for the Pre-U Global Perspectives & Research qualification will be allocated points according to the grade achieved as follows:

| Grade achieved in subject | Points for Pre-U GPR (Double Credit) study |
|---------------------------|--------------------------------------------|
| D1 | 140 |
| D2 | 140 |
| D3 | 126 |
| M1 | 112 |
| M2 | 98 |
| M3 | 84 |
| P1 | 70 |
| P2 | 56 |
| P3 | 42 |

Candidates may take more than the required number of syllabuses, e.g. 3 A Levels plus 1 AS Level, or 4 A Levels. The rule in such cases is that at least one subject must be taken and passed from each curriculum group at Grade 'E' or better at A Level or AICE (Half Credit) or Grade 'e' or better at AS Level. The best total of 6 credits will then be counted for the AICE Diploma irrespective of curriculum group. (Note: **at award stage** candidates can use their AICE Half Credit subject to fulfil the one credit in a group requirement.)

The maximum number of points a candidate can be awarded for the AICE Diploma is 360. The award received by the candidates is then determined as follows:

| Candidate's total score | Award (if candidate has at least six credits across the three Groups) |
|-------------------------|------------------------------------------------------------------------|
| 320 to 360 | AICE Diploma with Distinction |
| 220 to 315 | AICE Diploma with Merit |
| 120 to 215 | AICE Diploma at Pass Level |
| Below 120 | No AICE Diploma, but certificates to record individual subject results |

9. Results and Certificates

Candidates who complete the AICE Diploma in one examination series will receive an AICE Diploma Statement of Results, a GCE Certificate showing the grades achieved in individual subjects and a separate AICE Diploma Certificate. Where applicable, a Cambridge International Level 3 Pre-U Certificate and/or an AICE Half Credit Certificate will also be issued showing the grade achieved in these subjects.

As GCE AS & A Level subjects are used to calculate the AICE Diploma, the AICE Diploma results will be issued with the GCE results. The inclusion of Pre-U GPR will not cause a change to the way that the AICE Diploma is certificated or issued.

The AICE Diploma Statement of Results layout will show the type of pass, the aggregate total point score, the individual subject points value and an asterisk against the subjects which contributed to the total point score. An aggregate point score will not be reported on the AICE Diploma Statement of Results for candidates who fail the AICE Diploma.

Candidates who fail the AICE Diploma will still receive a GCE Certificate reporting their performance in GCE AS & A Level syllabuses (and a Cambridge International Level 3 Pre-U Certificate and/or an AICE Half Credit certificate where applicable).

Multi-series candidates will receive a GCE, Pre-U GPR or AICE Half Credit Statement of Result and Certificate at the end of each examination series as applicable, and will be certificated for the AICE Diploma at the end of the final examination series.

INDEX OF CAMBRIDGE INTERNATIONAL PRIMARY ACHIEVEMENT TESTS IN SYLLABUS CODE ORDER

| Code | Syllabus | Page |
|-------------|-----------------|-------------|
| 0841 | English | 31 |
| 0842 | Mathematics | 31 |
| 0843 | Science | 31 |

INDEX OF CHECKPOINT SYLLABUSES IN SYLLABUS CODE ORDER

| Code | Syllabus | Page |
|-------------|-----------------|-------------|
| 1111 | English | 33 |
| 1112 | Mathematics | 33 |
| 1113 | Science | 33 |

INDEX OF IGCSE SYLLABUSES IN SYLLABUS CODE ORDER

| Code | Syllabus | Page |
|-------------|-------------------------------------------------|-------------|
| 0400 | Art and Design | 36 |
| 0410 | Music | 47 |
| 0411 | Drama | 40 |
| 0413 | Physical Education | 47 |
| 0417 | Information and Communication Technology | 45 |
| 0420 | Computer Studies | 38 |
| 0445 | Design and Technology | 39 |
| 0450 | Business Studies | 37 |
| 0452 | Accounting | 35 |
| 0453 | Development Studies | 39 |
| 0454 | Enterprise | 41 |
| 0455 | Economics | 40 |
| 0457 | Global Perspectives | 44 |
| 0460 | Geography | 44 |
| 0470 | History | 45 |
| 0471 | Travel and Tourism | 49 |
| 0486 | Literature (English) | 46 |
| 0488 | Literature (Spanish) | 46 |
| 0490 | Religious Studies | 48 |
| 0495 | Sociology | 48 |
| 0500 | First Language English | 42 |
| 0502 | First Language Spanish | 43 |
| 0508 | First Language Arabic | 42 |
| 0510 | English as a Second Language (Oral Endorsement) | 41 |
| 0511 | English as a Second Language (Count-in Oral) | 40 |
| 0512 | First Language Afrikaans | 42 |
| 0519 | Japanese | 45 |
| 0520 | French | 44 |
| 0521 | First Language Korean | 43 |
| 0530 | Spanish | 49 |
| 0531 | IsiZulu as a Second Language | 45 |
| 0545 | Indonesian | 45 |
| 0548 | Afrikaans as a Second Language | 35 |
| 0580 | Mathematics (Without Coursework) | 47 |
| 0581 | Mathematics (With Coursework) | 46 |
| 0600 | Agriculture | 35 |
| 0606 | Additional Mathematics | 35 |
| 0607 | Cambridge International Mathematics | 37 |
| 0608 | Twenty First Century Science | 49 |
| 0610 | Biology | 36 |

| | | |
|------|--------------------------------------|----|
| 0620 | Chemistry | 37 |
| 0625 | Physics | 48 |
| 0637 | Child Development | 38 |
| 0648 | Food and Nutrition | 44 |
| 0652 | Physical Science | 47 |
| 0653 | Combined Science | 38 |
| 0654 | Co-ordinated Sciences (Double Award) | 39 |
| 0680 | Environmental Management | 41 |

INDEX OF GCE O LEVEL SYLLABUSES IN SYLLABUS CODE ORDER

| Code | Syllabus | Page |
|------|-------------------------------------|------|
| 1123 | English Language | 60 |
| 2010 | Literature in English | 62 |
| 2048 | Religious Studies (Bible Knowledge) | 63 |
| 2055 | Hinduism | 61 |
| 2056 | Islamic Religion & Culture | 61 |
| 2058 | Islamiyat | 62 |
| 2059 | Pakistan Studies | 62 |
| 2158 | History (World Affairs, 1917-1991) | 61 |
| 2217 | Geography | 60 |
| 2251 | Sociology | 64 |
| 2281 | Economics | 59 |
| 3025 | German (Syllabus B) | 61 |
| 3035 | Spanish | 64 |
| 3158 | Setswana | 64 |
| 3180 | Arabic | 56 |
| 3195 | Hindi | 61 |
| 3248 | Second Language Urdu | 64 |
| 4024 | Mathematics (Syllabus D) | 62 |
| 4037 | Additional Mathematics | 56 |
| 4040 | Statistics | 64 |
| 5014 | Environmental Management | 60 |
| 5038 | Agriculture | 56 |
| 5054 | Physics | 62 |
| 5070 | Chemistry | 58 |
| 5090 | Biology | 58 |
| 5096 | Human and Social Biology | 61 |
| 5124 | Science (Physics, Chemistry) | 63 |
| 5125 | Science (Biology, Physics) | 63 |
| 5126 | Science (Biology, Chemistry) | 63 |
| 5129 | Combined Science | 58 |
| 5130 | Additional Combined Science | 56 |
| 6010 | Art | 57 |
| 6043 | Design and Technology | 59 |
| 6050 | Fashion and Fabrics | 60 |
| 6065 | Food and Nutrition | 60 |
| 7010 | Computer Studies | 59 |
| 7048 | CDT: Design and Communication | 58 |
| 7096 | Travel and Tourism | 65 |
| 7100 | Commerce | 59 |
| 7101 | Commercial Studies | 59 |
| 7110 | Principles of Accounts | 63 |
| 7115 | Business Studies | 58 |

INDEX OF GCE AS & A LEVEL SYLLABUSES IN SYLLABUS CODE ORDER

| Code | Syllabus | Page |
|------|------------------------------------|------|
| 8001 | General Paper (International) | 75 |
| 8004 | General Paper | 75 |
| 8041 | Divinity | 73 |
| 8053 | Islamic Studies | 79 |
| 8058 | Hinduism | 77 |
| 8281 | Japanese Language | 79 |
| 8291 | Environmental Management | 74 |
| 8663 | Music | 83 |
| 8665 | First Language Spanish | 74 |
| 8669 | Chinese Literature | 71 |
| 8670 | French Literature | 75 |
| 8673 | Spanish Literature | 84 |
| 8675 | Hindi Literature | 77 |
| 8679 | Afrikaans Language | 68 |
| 8680 | Arabic Language | 69 |
| 8681 | Chinese Language | 71 |
| 8682 | French Language | 75 |
| 8683 | German Language | 76 |
| 8685 | Spanish Language | 84 |
| 8686 | Urdu Language | 86 |
| 8687 | Hindi Language | 77 |
| 8688 | Marathi Language | 81 |
| 8689 | Tamil Language | 85 |
| 8690 | Telugu Language | 85 |
| 8693 | English Language | 73 |
| 8695 | Language and Literature in English | 80 |
| 8779 | First Language Afrikaans | 74 |
| 9011 | Divinity | 73 |
| 9013 | Islamic Studies | 79 |
| 9014 | Hinduism | 77 |
| 9084 | Law | 80 |
| 9231 | Further Mathematics | 75 |
| 9274 | Classical Studies | 71 |
| 9336 | Food Studies | 74 |
| 9395 | Travel and Tourism | 86 |
| 9396 | Physical Education | 83 |
| 9631 | Design and Textiles | 72 |
| 9676 | Urdu | 86 |
| 9679 | Afrikaans | 68 |
| 9680 | Arabic | 69 |
| 9687 | Hindi | 76 |
| 9688 | Marathi | 81 |
| 9689 | Tamil | 85 |
| 9690 | Telugu | 85 |
| 9691 | Computing | 72 |
| 9694 | Thinking Skills | 85 |
| 9695 | Literature in English | 80 |
| 9696 | Geography | 76 |
| 9697 | History | 78 |
| 9698 | Psychology | 83 |
| 9699 | Sociology | 84 |
| 9700 | Biology | 70 |
| 9701 | Chemistry | 71 |
| 9702 | Physics | 83 |
| 9703 | Music | 82 |
| 9704 | Art and Design | 70 |
| 9705 | Design and Technology | 72 |
| 9706 | Accounting | 68 |
| 9707 | Business Studies | 70 |
| 9708 | Economics | 73 |

| | | |
|------|------------------------------------------------|----|
| 9709 | Mathematics | 81 |
| 9713 | Applied Information & Communication Technology | 69 |
| 9715 | Chinese | 71 |
| 9716 | French | 75 |
| 9717 | German | 76 |
| 9719 | Spanish | 84 |

INDEX OF AICE (HC) SYLLABUSES IN SYLLABUS CODE ORDER

| Code | Syllabus | Page |
|-------------|--------------------|-------------|
| 0396 | English Language | 87 |
| 0397 | English Literature | 87 |

INDEX OF CAMBRIDGE INTERNATIONAL LEVEL 3 PRE-U CERTIFICATE SYLLABUSES IN SYLLABUS CODE ORDER

| Code | Syllabus | Page |
|-------------|--------------------------------|-------------|
| 9777 | Global Perspectives & Research | 89 |

University of Cambridge International Examinations
1 Hills Road, Cambridge, CB1 2EU, United Kingdom
Tel: +44 1223 553554 Fax: +44 1223 553558
Email: international@cie.org.uk Website: www.cie.org.uk

© University of Cambridge International Examinations 2011

